



Embarcadero Performance Center 2.6.2 Installation Guide

Copyright © 1994-2009 Embarcadero Technologies, Inc.

Embarcadero Technologies, Inc.
100 California Street, 12th Floor
San Francisco, CA 94111 U.S.A.
All rights reserved.

All brands and product names are trademarks or registered trademarks of their respective owners.

This software/documentation contains proprietary information of Embarcadero Technologies, Inc.; it is provided under a license agreement containing restrictions on use and disclosure and is also protected by copyright law. Reverse engineering of the software is prohibited.

If this software/documentation is delivered to a U.S. Government Agency of the Department of Defense, then it is delivered with Restricted Rights and the following legend is applicable:

Restricted Rights Legend Use, duplication, or disclosure by the Government is subject to restrictions as set forth in subparagraph (c)(1)(ii) of DFARS 252.227-7013, Rights in Technical Data and Computer Software (October 1988).

If this software/documentation is delivered to a U.S. Government Agency not within the Department of Defense, then it is delivered with Restricted Rights, as defined in FAR 552.227-14, Rights in Data-General, including Alternate III (June 1987).

Information in this document is subject to change without notice. Revisions may be issued to advise of such changes and additions. Embarcadero Technologies, Inc. does not warrant that this documentation is error-free.

Contents

Installation.....	4
Technical Requirements	4
Repository	5
Performance Center Installation Prerequisites	5
Performance Center Server Requirements.....	6
Prerequisites for Performance Center Client	7
Client Requirements	7
Oracle Interoperability Matrix	7
Server and Repository Prerequisites	8
Performance Center Web Server	9
Client Installation Prerequisites.....	10
Installing Performance Center	10
Welcome to the Installshield Wizard for Performance Center.....	11
License Agreement.....	11
Performance Center Service Logon Account	11
Custom Setup	13
About Desktop Icon.....	17
Ready to Install	18
Performance Center Repository Wizard	19
Performance Center Repository - Create	21
Performance Center Repository - Create and Customize.....	25
DB2	26
Performance Center Repository Installation 2 of 3	26
Oracle	27
Performance Center Repository Installation 2 of 3	27
Creating an Oracle User	28
Oracle User Wizard - Panel 1	28
Oracle User Wizard - Panel 2	29
Oracle User Wizard - Panel 3	30
Oracle User Wizard - Panel 4	32
Creating a Repository	33
Oracle Tablespace Wizard - Panel 1.....	33
Oracle Tablespace Wizard - Panel 2.....	35
Oracle Tablespace Wizard - Panel 3.....	36
Performance Center Repository - Use Existing Repository	37
Performance Center Repository Installation	38
DB2	38

Performance Center Repository Installation 2 of 3	39
SQL Server	39
Performance Center Repository Installation 3 of 4	39
Performance Center Repository Installation 4 of 4	40
Creating a SQL Server Database	41
SQL Server Database Wizard - Panel 1	42
Add Database and Transaction Log Files	42
SQL Server Database Wizard - Panel 2	44
SQL Server Database Wizard - Panel 3	45
SQL Server Database Wizard - Panel 4	46
Creating a SQL Server User	47
SQL Server User Wizard - Panel 1	47
SQL Server User Wizard - Panel 2	48
SQL Server Login ID	49
Opening the SQL Server Login Wizard	50
SQL Server Login Wizard - Panel 1	50
SQL Server Login Wizard - Panel 2	51
SQL Server Login Wizard - Panel 3	51
Sybase	52
Performance Center Repository Installation 3 of 4	52
Performance Center Repository Installation 4 of 4	53
Creating a Sybase Database	53
Sybase Database Wizard - Panel 1	53
Sybase Database Wizard - Panel 2	54
Sybase Database Wizard - Panel 3	54
Creating a Sybase User	54
Sybase User Wizard - Panel 1	55
Sybase Login ID	55
Sybase Login Wizard - Panel 1	55
Sybase Login Wizard - Panel 2	56
Sybase Login Wizard - Panel 3	56
Sybase Login Wizard - Panel 4	57
Creating a Segment	57
Sybase Segment Wizard - Panel 1	57
Sybase Segment Wizard - Panel 2	57
Upgrading an Existing Oracle or Sybase Repository	58
Performance Center Repository Wizard 2 of 2	58
InstallShield Wizard Complete	59
Uninstalling Performance Center	59
Uninstalling Your Server, Client, and/or Repository	59

Licensing Performance Center 62

 Registering a Trial or Workstation License at Application Startup 63

 Registering a Workstation License after Application Startup 63

 Registering by Phone 64

 Registering a Networked License 64

Installation

This section provides detailed advice on installing the application. The Performance Center Installation Guide includes the following sections:

[Technical Requirements](#)

[Installing Performance Center](#)

[Uninstalling Performance Center](#)

[Licensing Performance Center](#)

Technical Requirements

Performance Center is a 32-bit application that runs in a Microsoft Windows environment. The application has specific prerequisite and minimum requirements for both the server and client, and the application requires a database server as a [repository](#) to store information used during monitoring. We recommend that you review the installation requirements before proceeding with the Performance Center Installation.

In addition to the prerequisite and minimum requirements for both the server and client, and the repository, the TCP protocol needs to be running on both the Performance Center client and server.

Before installing Performance Center, the Installation checks your server to see if your environment includes the required prerequisites. If any of these items are missing, or if you are running earlier versions, when you advance to the Performance Center Setup panel, only [Install Performance Center Prerequisites](#) is available. To proceed with the installation, you must select this option. The installation returns a Prerequisite Component list with the missing components selected by default. You must install any missing prerequisites before you can install the application. If you do not install these components, you cannot install Performance Center.

Context sensitive help is available throughout the installation. To access the help for a particular panel, press F1.

Repository

Performance Center uses a database server as a repository to store information used during monitoring. The database server must include database middleware so that the Performance Center Server can connect to the repository. The table below describes the supported databases and corresponding database middleware:

Database Server	Database Middleware
DB2	DB2 CLI Client
Oracle version 8.0 – 10g	Oracle SQL*Net Client NOTE Before installing Performance Center Repository on an Oracle Server, we recommend that you review the Oracle Interoperability Matrix to confirm compatibility between Database Server and Database Middleware. NOTE You cannot deploy objects to the SYS user account.
Microsoft SQL Server 2000 and 2005	Microsoft SQL Server Client Library
Sybase 12.0 – 15.0	Sybase Open Client

CAUTION: If you are installing the Performance Center Repository on Oracle 9.0.1.1.1, you need Oracle 9i patch set version: 9.0.1.3.1 installed on your database server before you can install the repository.

We recommend that your server have a default storage space of 50 MB. However, larger database environments may require more storage space.

Performance Center Installation Prerequisites

Before installing Performance Center, the Installation checks to see if the machine where you are installing the application has the components described in the table below. If any of these items are missing, or if you are running earlier versions, when you get to the Performance Center Setup panel, only the Install Performance Center Prerequisites is available. To proceed with the installation, you must [select](#) this option. The installation will return a Prerequisite Component list with the missing components selected by default. You must install any missing prerequisites before you can install the application. If you do not install these components, you cannot install Performance Center.

NOTE: Some Windows components require that you restart your machine. If you require any of these components, the installation asks if you want to restart your machine before proceeding. If you do not restart your machine, the installation terminates.

Component	Description
Internet Explorer (IE) 5.5 or later	Performance Center uses IE to display the application Web pages and reports. Performance Center also uses the Microsoft Task Scheduler component of IE for scheduling some reports. You must start the Scheduler service to schedule Performance Center reports.
Microsoft Data Access Component (MDAC) 2.7 or later	Performance Center uses MDAC to establish a connection to your repository database and monitored datasources. If you do not have MDAC, or if you are running a version earlier than 2.7, the Installation installs or upgrades MDAC on your server.
Windows Scripting Host 5.6 or later	Performance Center uses this tool to run Visual Basic scripts. If you do not have Windows Scripting Host, or if you are running a version earlier than 5.0, the Installation installs or upgrades Windows Scripting Host on your server.
Microsoft Windows Installer 1.11 or later.	The installation uses this to install Apache. It is included in the installation.
About Desktop Icon	For Performance Center to work properly it needs Apache Version 2.2.6 and up installed on Local System or IIS Server installed on the Domain account. The allows communication between the Performance Center Client and Server. For details on how the installation determines which Web server to use, see Performance Center Web Server .

CAUTION: If IIS is the default web server, it is strongly recommended that an actual domain user is selected to run the service, and not the Local System account. Also, that user must be in the administrators group.

For details about the prerequisite installation, see [Server and Repository Prerequisite Installation](#).

Performance Center Server Requirements

Performance Center server has specific Server requirements detailed below:

Minimum Hardware Requirements

- 512 megabytes (MB) of RAM
- 60 MB hard disk storage

NOTE: As with any system, the number of processes you are running can affect performance.

Operating System Requirements

- Apache Version 2.2.6 (provided with the installation)
- Windows 2000
- OR
- Windows XP
- OR

- Windows 2003

Prerequisites for Performance Center Client

If you are installing using the Performance Center Client Only installation, the Installation checks to see if the machine where you are installing the application has the components described in the following table:

Component	Description
Internet Explorer (IE) 5.0 or later	Performance Center uses IE to display the application Web pages and reports.
Microsoft Data Access Component (MDAC) 2.7 or later	Performance Center Client uses MDAC to assist in communication with the server
Active Directory Service Interface (ADSI) 2.5	Performance Center uses ADSI to create and configure a user. If you do not have ADSI, or if you are running a version earlier than 2.5, the Installation will install or upgrade ADSI on your server.

If you are missing either of the components, the Installation asks if you want to install them before proceeding with the installation. If you do not install these components, you cannot install Performance Center. After the Installation installs the prerequisites, you must restart your machine.

For details about the prerequisite installation, see [Installing Performance Center Client Prerequisites](#).

Client Requirements

Performance Center Client has specific requirements detailed below.

Minimum Hardware Requirements

- 128 MB of RAM
- 30 MB hard disk

Operating System Requirements

- Windows 2000
- OR
- Windows 2003
- OR
- Windows XP

Oracle Interoperability Matrix

To perform accurate monitoring, your Oracle SQL*Net8 client must be compatible with your Oracle Server version. The matrix below displays the interoperability for all versions of Oracle SQL*Net8 Client and Oracle Server. Please review the matrix to confirm compatibility between the Database Server and Database Middleware:

	Server Version							
	9.2.0	9.0.1	8.1.7	8.1.6	8.1.5	8.0.6	8.0.5	7.3.4
Client Version 9.2.0								
9.0.1								
8.1.7								
8.1.6								
8.1.5								
8.0.6								
8.0.5								
7.3.4								

Supported.
 Never supported.

 These Oracle Client and Server combinations are only supported by Oracle if you have an Extended Maintenance Support Contract (EMS).
 These Oracle Client and Server combinations include one version that is no longer supported by Primary Error Correct Support or EMS. This combination will not work; choose a combination from the Supported or EMS category.

Server and Repository Prerequisites

Before installing Performance Center, the Installation checks to see if the machine where you are installing the application has the components required to run it. If any of these components are missing, or if you are running earlier versions, when you get to the Performance Center Setup panel, only the Performance Center Prerequisites button is available.

- 1 To proceed with the installation, select the **Performance Center Prerequisites** option, click **Next**, and the installation does a component check and returns a message box listing the missing components.
- 2 Review the **Confirm Additional Components** list, and then do the following:
 - If you want the Installation to add these components on your server, click **Yes**.
 - If you do not want to install the additional components, click **No**.

NOTE: If you click No, the installation terminates. You cannot install Performance Center until you install the missing prerequisite components.

The Installation installs the additional components in the following order:

- MDAC
- ADSI
- Windows Scripting Host
- Microsoft Installer (installs Apache)
- Apache

If you are installing Apache, the installation opens a separate Installation Wizard. You must complete each panel to install Apache. When the Apache installation completes, the installation returns you to the Performance Center installation.

NOTE: Some Windows components require that you restart your machine. If you require any of these components, after installation, you will be prompted to restart your machine. You must restart your machine to proceed with the Performance Center installation.

When the Installation finishes installing the additional components, it displays a message box that asks if you want to reboot your server.

NOTE: To continue with the installation, you must reboot your server.

- If you want to reboot your server, on the installation message box, click **Yes**.
- If you do not want to reboot your server, click **No** and the Installation terminates the installation.

CAUTION: If you clicked No, you must reboot your server before continuing with the Performance Center Installation.

Performance Center Web Server

Performance Center uses a Web Server to manage communications between the Performance Center Client and Server.

NOTE: It is strongly recommend to install Apache 2.0.35 or greater and Performance Center on the Local System Account.

During installation you are given different options on what action to take.

- If you don't have any Web Server (Apache or IIS) installed, Performance Center installs Apache version 2.2.6 on the Local System Account. The default port setting is 80, but you can change this.
- If you have the IIS Server already installed and it is the only Web Server on your computer, then the Web Server Selection dialog appears. You can choose to use the IIS already installed or to install Apache 2.2.6. You also have the option to change the Apache port. The default setting is 80.
- If an older version (before 2.0.35) of Apache is detected, then the installation shows a message that this older version of Apache should be removed. The installation process stops at this point. Once you have installed the new Apache version, you can restart the installation.
- If you have IIS and an older version (before 2.0.35) of Apache, and you choose to use IIS as the Web Server, then the installation of Performance Center continues, ignoring the Apache installation.
- If you have Apache (with a version newer than 2.0.35) and IIS Web Servers installed, Performance Center will let you pick one:
- If you have the Apache Web Server installed on the Domain User Account, a message opens telling you that Apache is installed on the Domain User Account. You then have the choice to manually reconfigure Apache to run under the Local System account, or you can let Performance Center reconfigure the Apache server.

For more information, see: [Web Server](#)

Client Installation Prerequisites

After you select your install components, the Installation performs a series of checks to confirm that your client includes Windows Scripting Host and IE. The Installation displays message boxes as it checks for each component. After completing the component check, the Installation displays a Confirm Additional Components list box, which lists the components that are missing from your client. The Installation installs the MDAC component.

NOTE: You must reboot your client before running Performance Center.

Installing the Additional Components

- 1 Review the **Confirm Additional Components** list, and then do the following:
 - If you want to install these additional components on your client, click **Yes**.
 - If you do not want to install the additional components, click **No**.
- 2 After the Installation finishes, a message appears asking if you want to reboot your client.
 - If you want to reboot your client, click **Yes**.
 - If you do not want to reboot your client at this time, click **No**.

NOTE: If you clicked No, you must reboot your client before running Performance Center.

Installing Performance Center

Performance Center Installation includes three components. The table below describes each component:

Installation Type	Description
Server	Includes a group of components that are responsible for unattended performance monitoring and notification of threshold violations.
Repository	Includes a repository where Performance Center stores information used during monitoring.
Client	Includes the graphical user interface (GUI) where you view performance information gathered from the monitored datasources.

This installation gives you the option to install the full version, which installs the server, repository and client. Or you can choose to install the client-only version, which installs only the client.

You must install the Server and Repository for server-side monitoring and you must install the Client to use the Performance Center user interface. You cannot install the Performance Center Server without installing a Performance Center Repository. You can install the Performance Center Client before installing the Server and Repository.

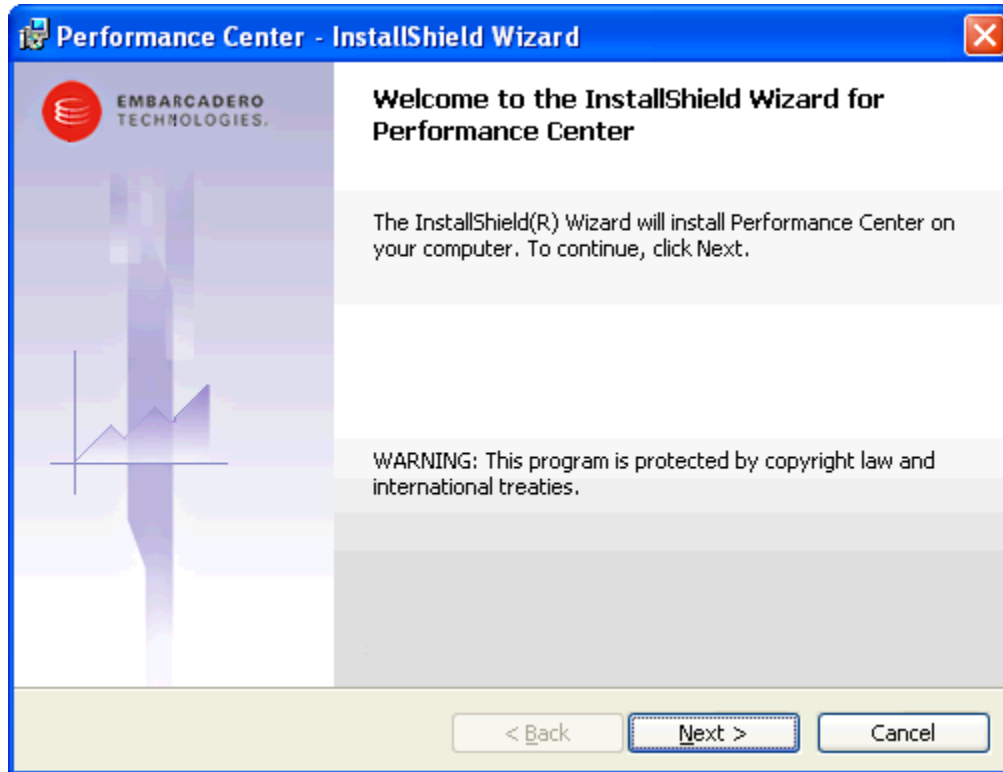
NOTE: By default, the integrated installation installs all three components of Performance Center - the Server, Client, and Repository. If you do not want to install the Client, you can clear the Client check box.

Notification Properties

In addition to installing a server, repository, and client, Performance Center also lets you set up Notification Properties so that you or a designated person can receive e-mail notifications regarding threshold violations. This lets you quickly resolve any problem in your environment.

Welcome to the InstallShield Wizard for Performance Center

When you first start the install process either from an executable or run an autorun install from the CD, an InstallShield Wizard progress dialog appears showing the extraction of the install files. Once that process is complete the Welcome dialog appears. Click **Next** to advance to the [License Agreement](#).



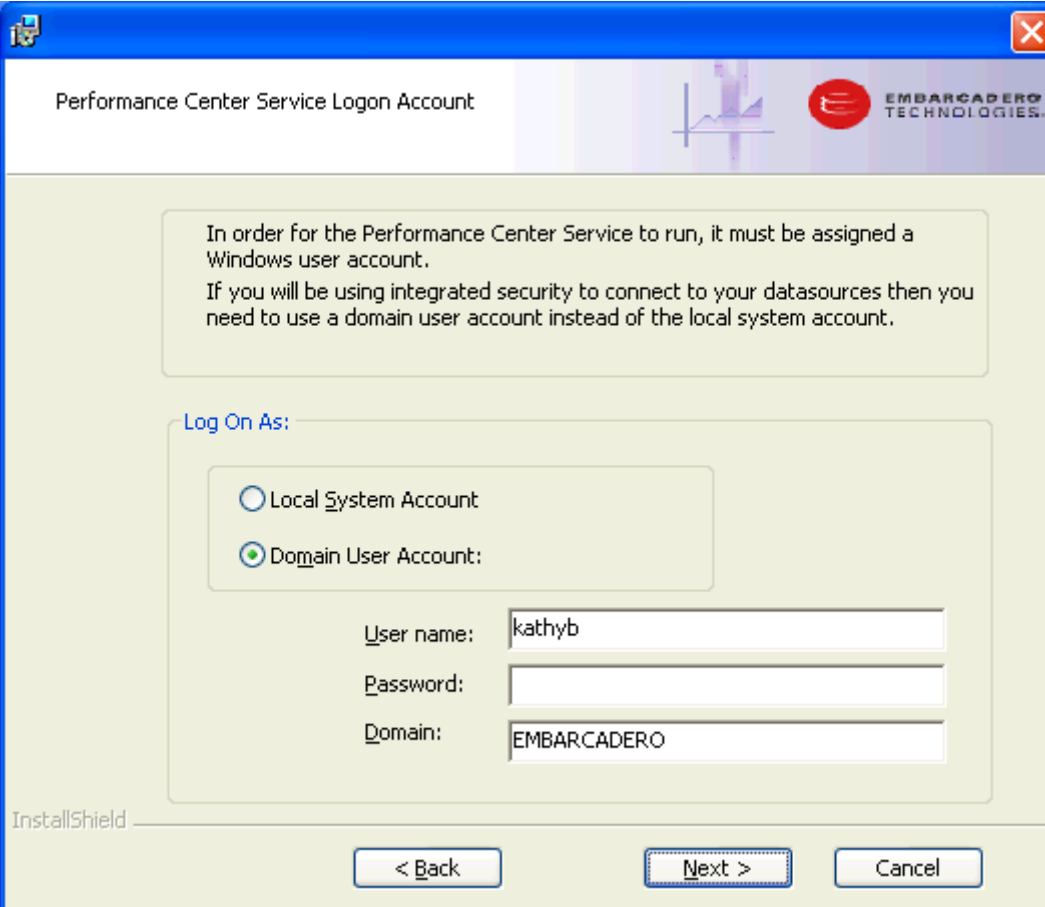
License Agreement

This panel displays the licence agreement for Performance Center. To proceed with the installation, you must accept the License Agreement terms. Click **Next** to continue to the [Performance Center Service Logon Account](#).

CAUTION: If you click **No**, the Installation terminates. You cannot proceed with the installation if you do not accept the License Agreement terms.

Performance Center Service Logon Account

Complete the required fields to create a Windows user account.



Performance Center Service Logon Account

In order for the Performance Center Service to run, it must be assigned a Windows user account.
If you will be using integrated security to connect to your datasources then you need to use a domain user account instead of the local system account.

Log On As:

☐ Local System Account

☒ Domain User Account:

User name: kathyb

Password:

Domain: EMBARCADERO

InstallShield

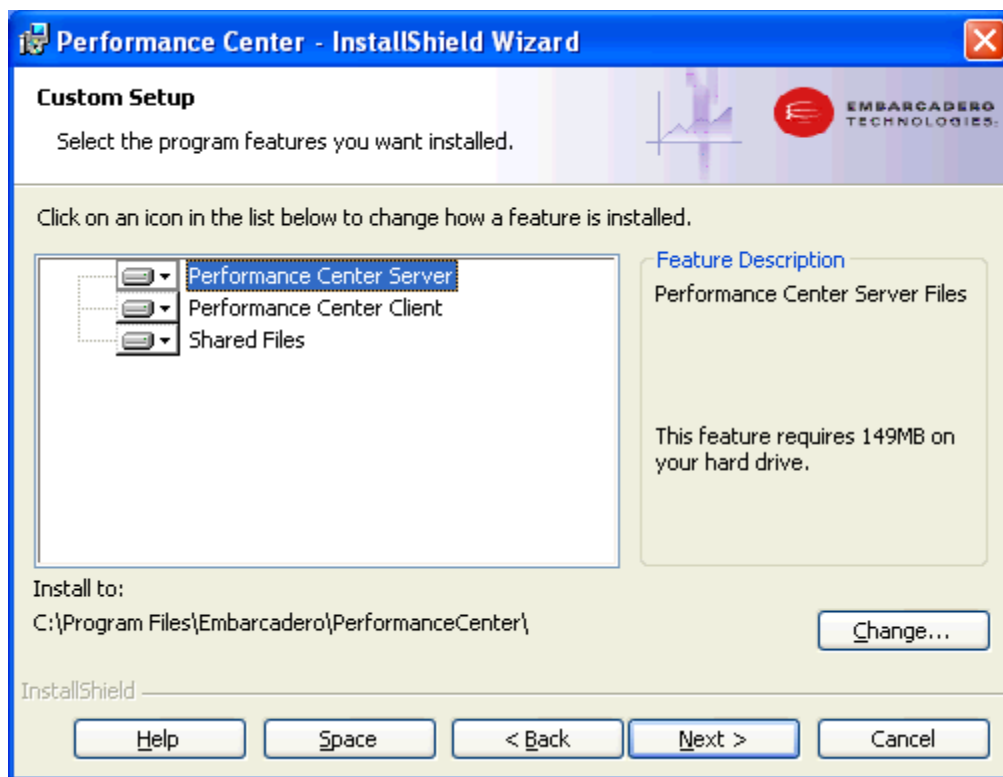
< Back Next > Cancel

Field	Description
Local System Account	Select this option if the repository resides on your local CPU. If you select this option, the remaining fields become unavailable.
Domain User Account	Select this option if your datasources are accessed via a server.
User name	Your user name is automatically entered and is generated from your login ID. If you are adding a user name that is different from the Login ID, type the new name in the User Name box.
Password	Enter the password associated with your user name.
Domain	The domain is automatically generated.

Click **Next** to advance to the [Custom Setup](#) panel.

Custom Setup

The Custom Setup panel allows you to select how the Performance Center Server, Performance Center Client, and shared files are installed.



When you click the drop-down arrow next to a feature the following options are available:

Available on:	Option	Description
Performance Center Server Performance Center Client Shared Files	This feature is installed on the local hard drive. This is the default setting.	You can designate the location where you want the server, client, or shared files installed. If you select this installation, the Install to: option appears. The default setting for the path is c:\Program Files\Embarcadero\PerformanceCenter\.
Performance Center Server Performance Center Client Shared Files	This feature, and all subfeatures are installed on the local hard drive	You can designate the location where you want the server, client, or shared files, and all related subfolders installed. If you select this installation, the Install to: option appears. The default setting for the path is c:\Program Files\Embarcadero\PerformanceCenter\.
Performance Center Server Performance Center Client Shared Files	This feature is installed to run from the network.	You can designate the location where you want the server, client, or shared files installed on a network share.

Available on:	Option	Description
Performance Center Server Performance Center Client Shared Files	This feature, and all subfeatures, will be installed to run from the network.	You can designate the location where you want the server, client, or shared files, and all related subfolders installed on a network share.
Performance Center Server	This feature is not available.	Select this option if you only want the Client and Shared Files installed.

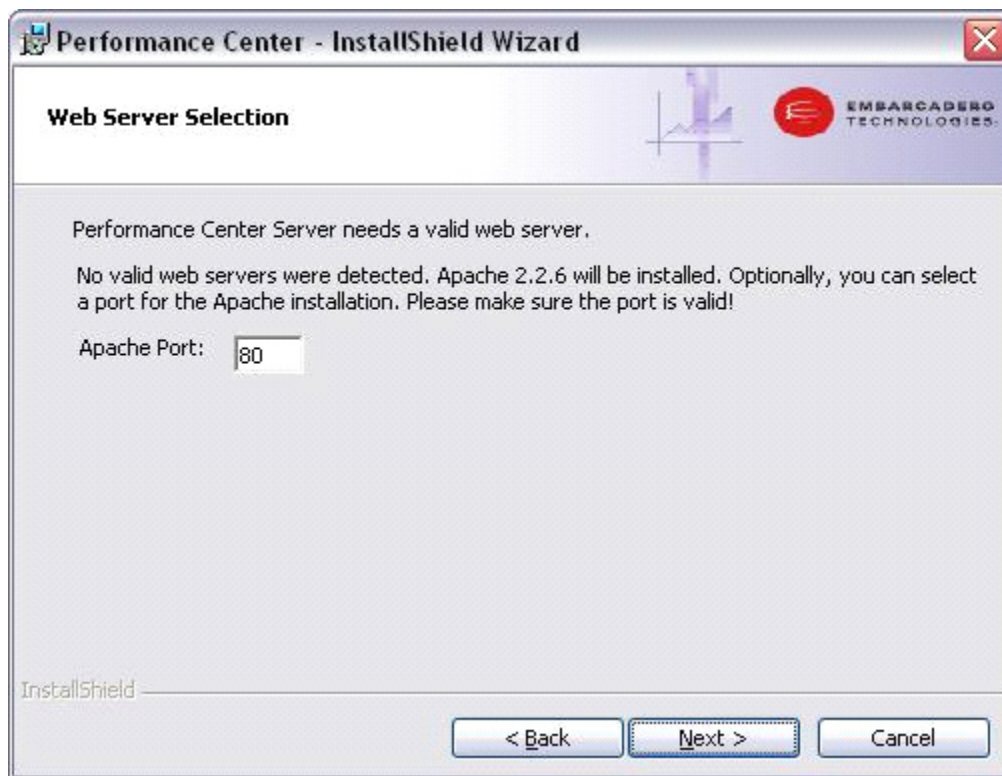
- Click **Space** to view the disk space available on your hard drives. Click **OK** to close the Disk Space Requirements dialog.
- Select the option you want for each feature and click **Next** to advanced to the [About Desktop Icon](#) dialog.

NOTE: A brief dialog appears telling you that the install is “Searching for a Web Server.” If you do not have a required Web Server, a dialog appears instructing you on what [steps](#) to take to install one.

Web Server

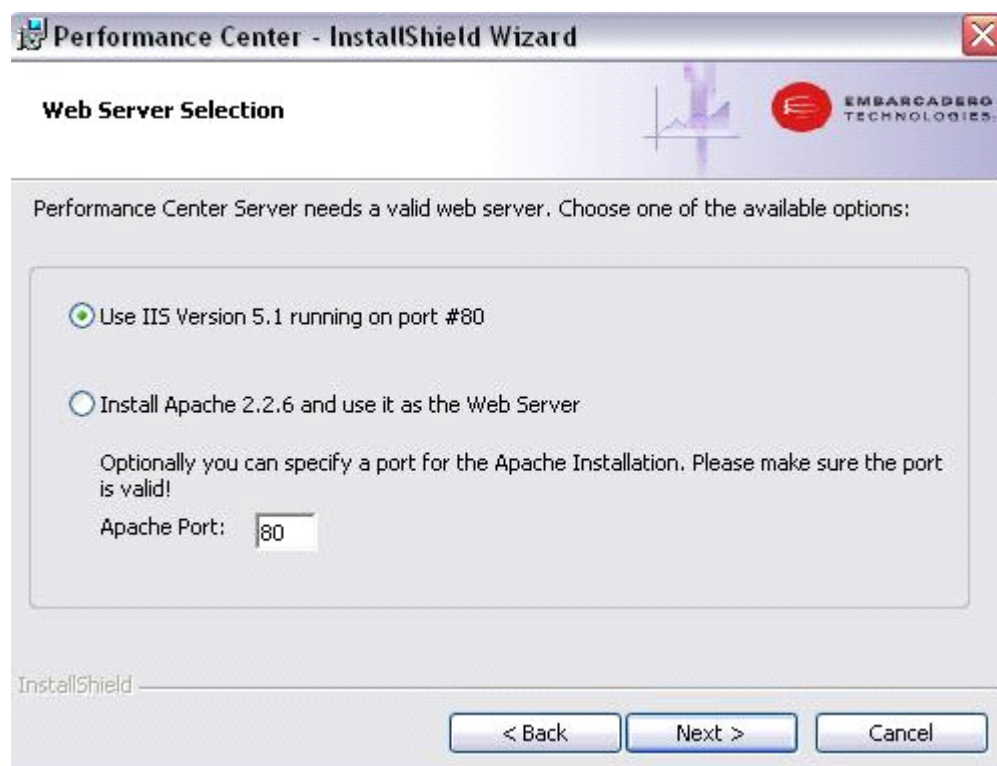
The desired installation for the Web Server is to use Apache 2.0.35 or greater on the Local System. However, all the available options are shown as follows:

- If you don't have any Web Server (Apache or IIS) installed, Performance Center installs Apache version 2.2.6 on the Local System Account. The default port setting is 80, but you can change this.

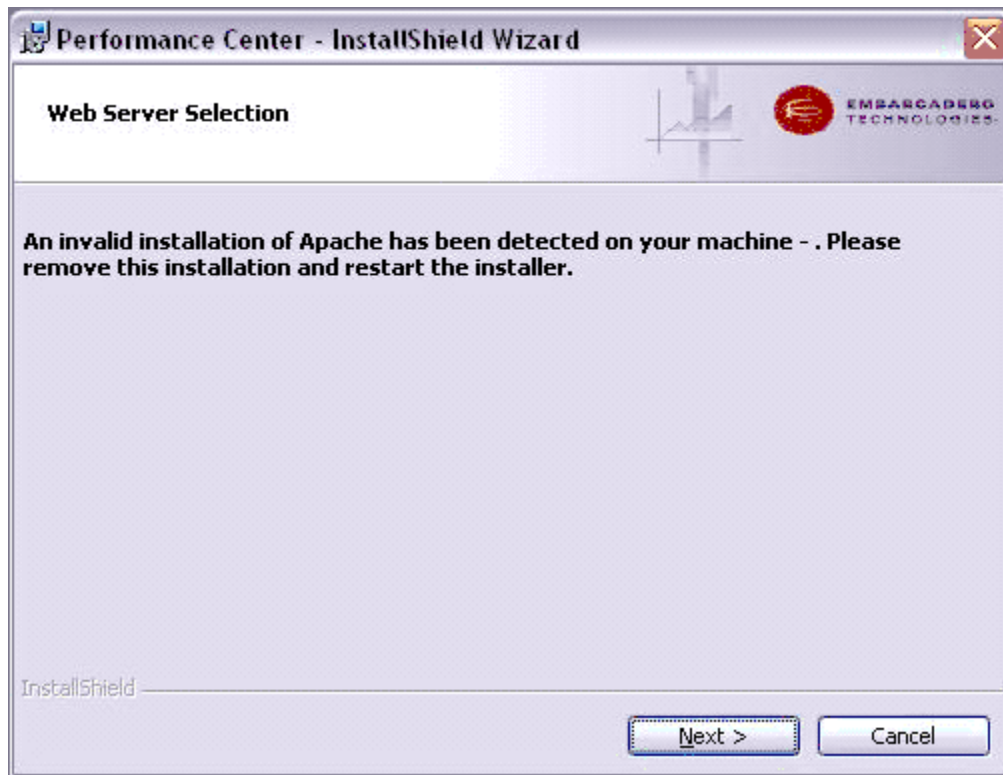


- If you have the IIS Server already installed and it is the only Web Server on your computer, then the Web Server Selection dialog appears. You can choose to use the IIS already installed or to install Apache 2.2.6. You also have the option to change the Apache port. The default setting is 80.

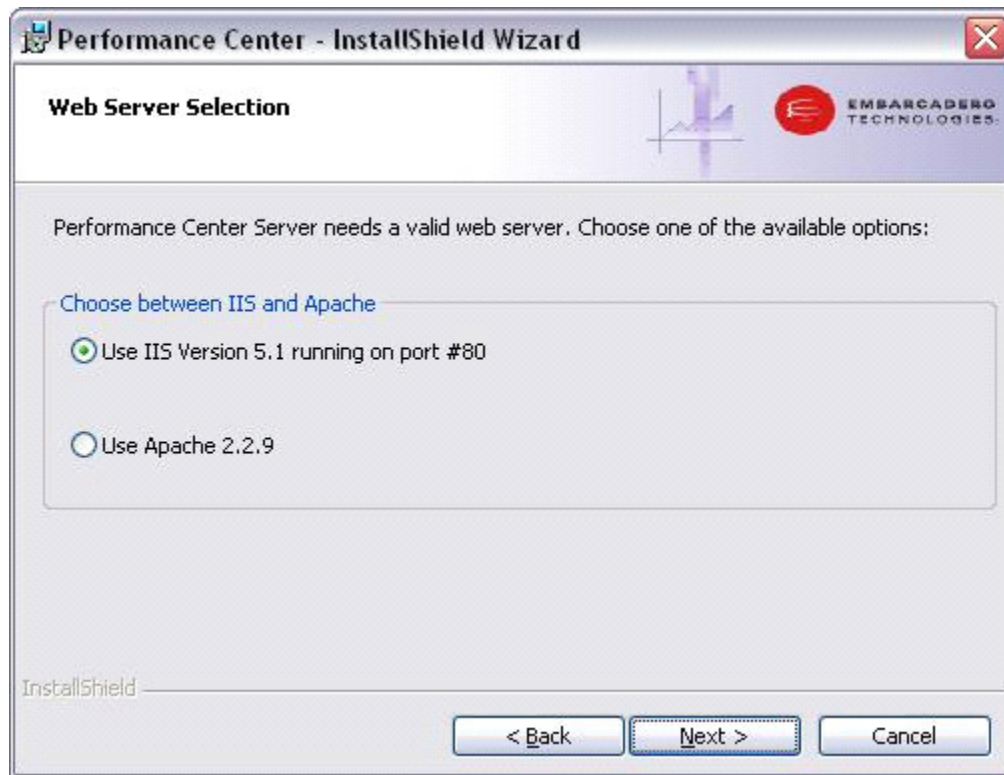
NOTE: If you choose to also install Apache, you must pick a different port, so as not to conflict with IIS.



- If an older version (before 2.0.35) of Apache is detected, then the installation shows a message that this older version of Apache should be removed. The installation process stops at this point. Once you have installed the new Apache version, you can restart the installation.



- If you have IIS and an older version (before 2.0.35) of Apache, and you choose to use IIS as the Web Server, then the installation of Performance Center continues, ignoring the Apache installation.
- If you have both Apache (with a version newer than 2.0.35) and IIS Web Servers installed, Performance Center will let you pick one.



NOTE: If Apache is installed under the Domain User Account it will be reconfigured to run under the Local System Account.


- If you have the Apache Web Server installed on the Domain User Account, a message opens telling you that Apache is installed on the Domain User Account. You then have the choice to manually reconfigure Apache to run under the Local System account, or you can let Performance Center reconfigure the Apache server.

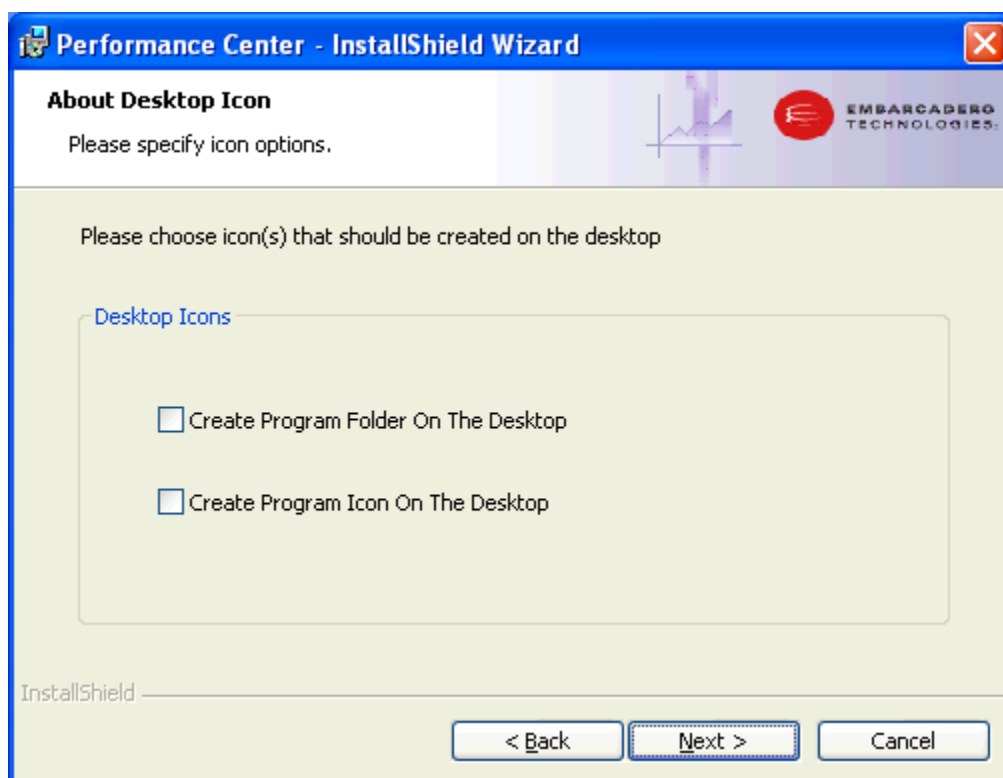
Click **Next** to automatically reset the Apache logon, or click **Cancel** to exit the installation.



NOTE: It is strongly recommend to install Apache and Performance Center on the Local System Account.

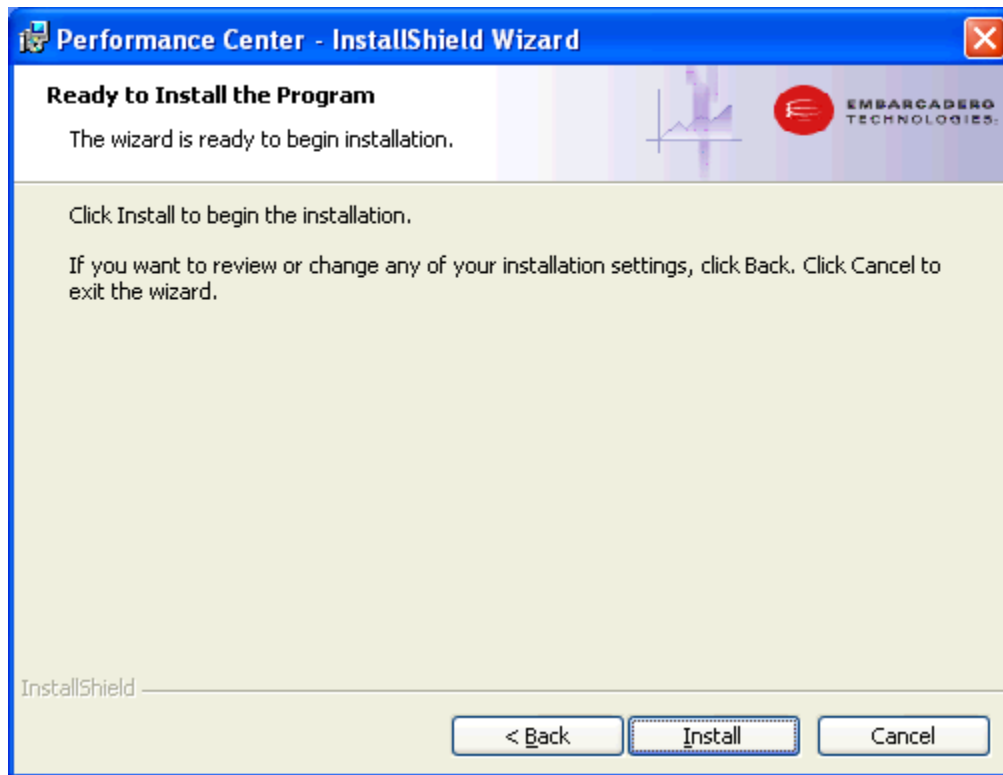
About Desktop Icon

You can choose to add a program folder and/or program icon () on your desktop. These two options are not selected by default. When you click **Next** you advance to the [Ready to Install](#) dialog.



Ready to Install

Click **Install** to start the installation. A Status dialog appears showing you what is happening during the installation and the progress of each step. You can click **Cancel** at any time to drop out of the install process. You will be shown a warning dialog to confirm this decision.



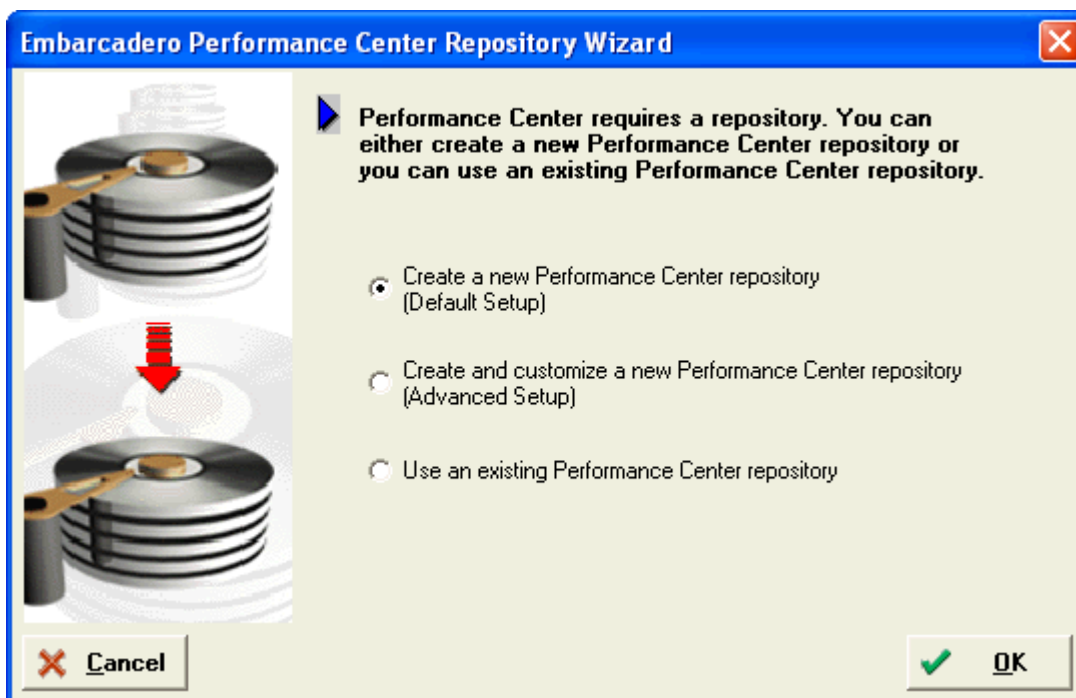
NOTE: If you select the option to run the client and server from the network, the [Product Registration](#) dialog opens during the install process. After you complete the registration information the install process is completed. Click **Finish** to close the InstallShield.

If you selected to install the client and server on the local hard drive you automatically advance to the [Performance Center Repository Wizard](#).

If you do not have

Performance Center Repository Wizard

Since the Performance Center requires a repository, the first step in the installation is to create a new repository; create and customize a repository; or use an existing repository.



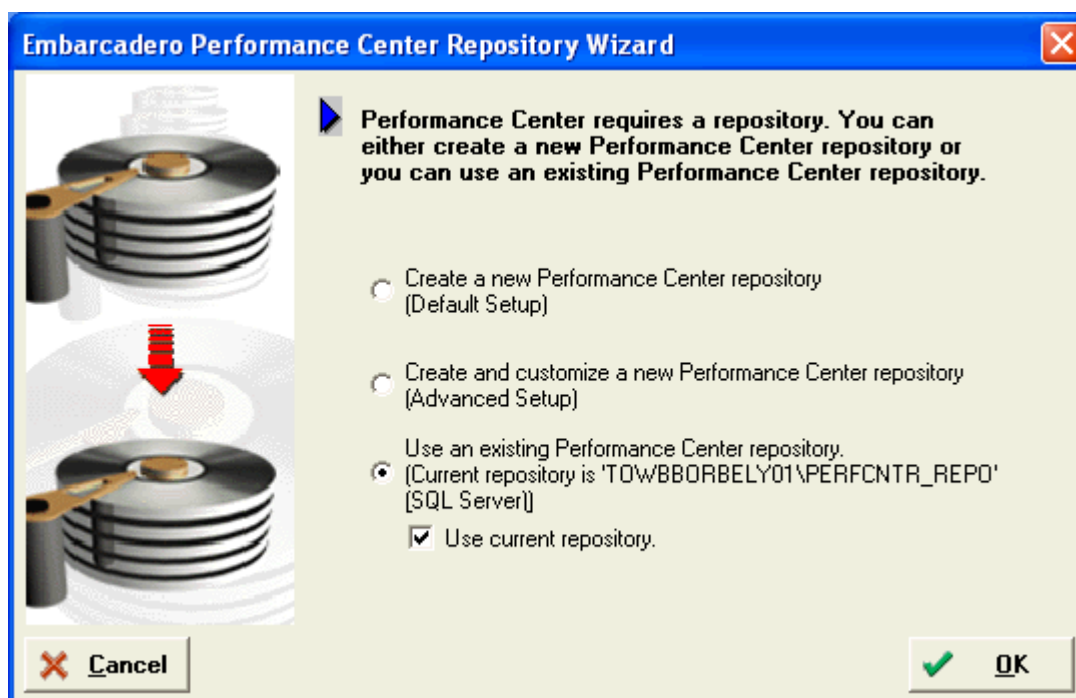
- 1 Select one of the three options and click **OK**.

Create a new Performance Center Repository The installation opens the [Performance Center Repository - Create](#).

Create and customize a new Performance Center Repository The installation opens the first panel of the [Performance Center Repository - Create and Customize](#).

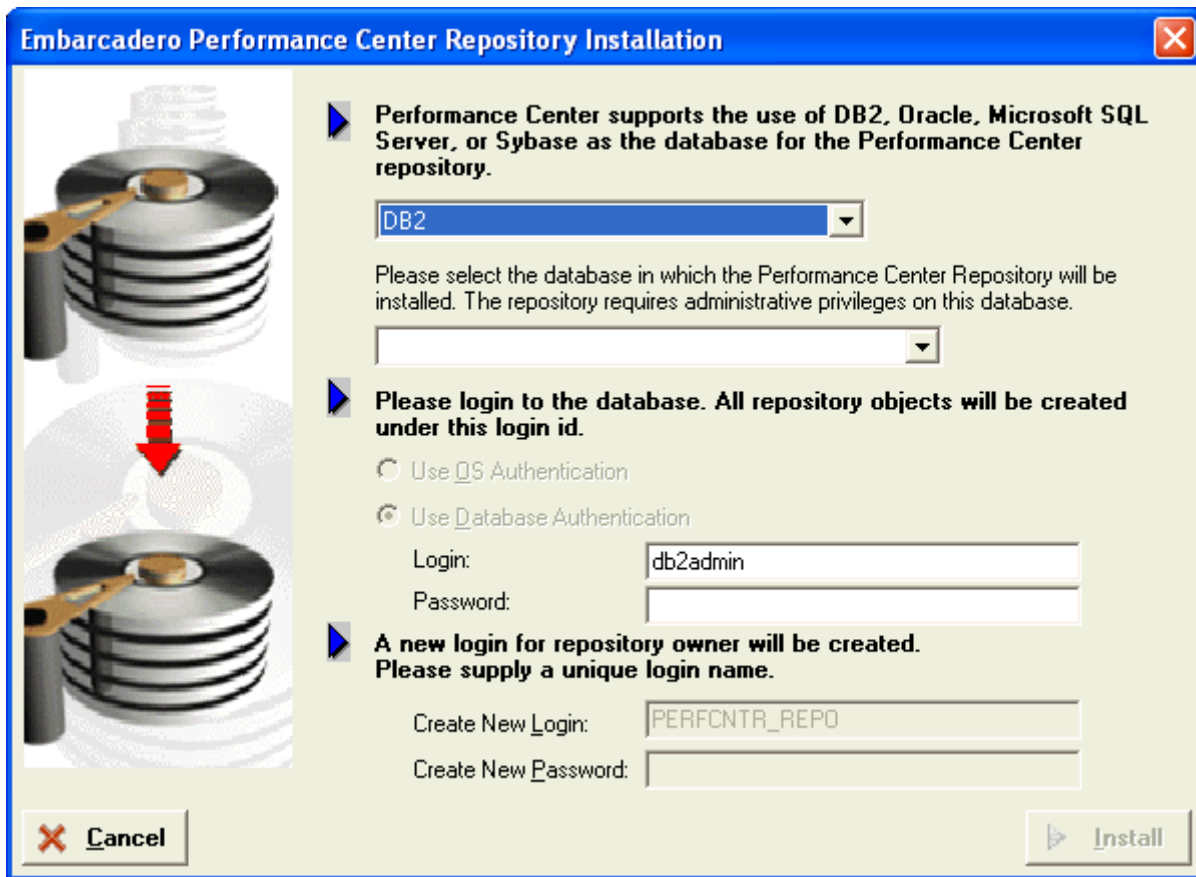
Use an existing Performance Center repository If the installation detects an existing DB2, Oracle, SQL Server, or Sybase repository, the name of that repository is displayed. The installation opens the first panel of the [Performance Center Repository - Use Existing Repository](#)

NOTE: The **Use current repository** option is selected by default. If you deselect this option the [Performance Center Repository Wizard](#) opens.



Performance Center Repository - Create

In the Repository Installation panel you select the target repository server platform, database, and administrative login for the Performance Center Repository. You can also specify a new login that will own the Performance Center Repository.



- 1 Click the **Platform** list, and select the target platform.

NOTE: The Performance Center Repository installs on the following platforms: DB2, Oracle, SQL Server, or Sybase.

CAUTION: If you are installing the Performance Center Repository on Oracle 9.0.1.1.1, you need Oracle 9i patch set version: 9.0.1.3.1 installed on your database server before you can install the repository.

- 2 From the **Database** list, select the database on which you want to install the Performance Center Repository. This list is populated once you select the platform.

NOTE: If you select DB2, Oracle, SQL Server, or Sybase you must have administrative privileges on the database that you choose.

- 3 In **Please login to the database...** select either the **Use OS Authentication** or **Use Database Authentication** option.

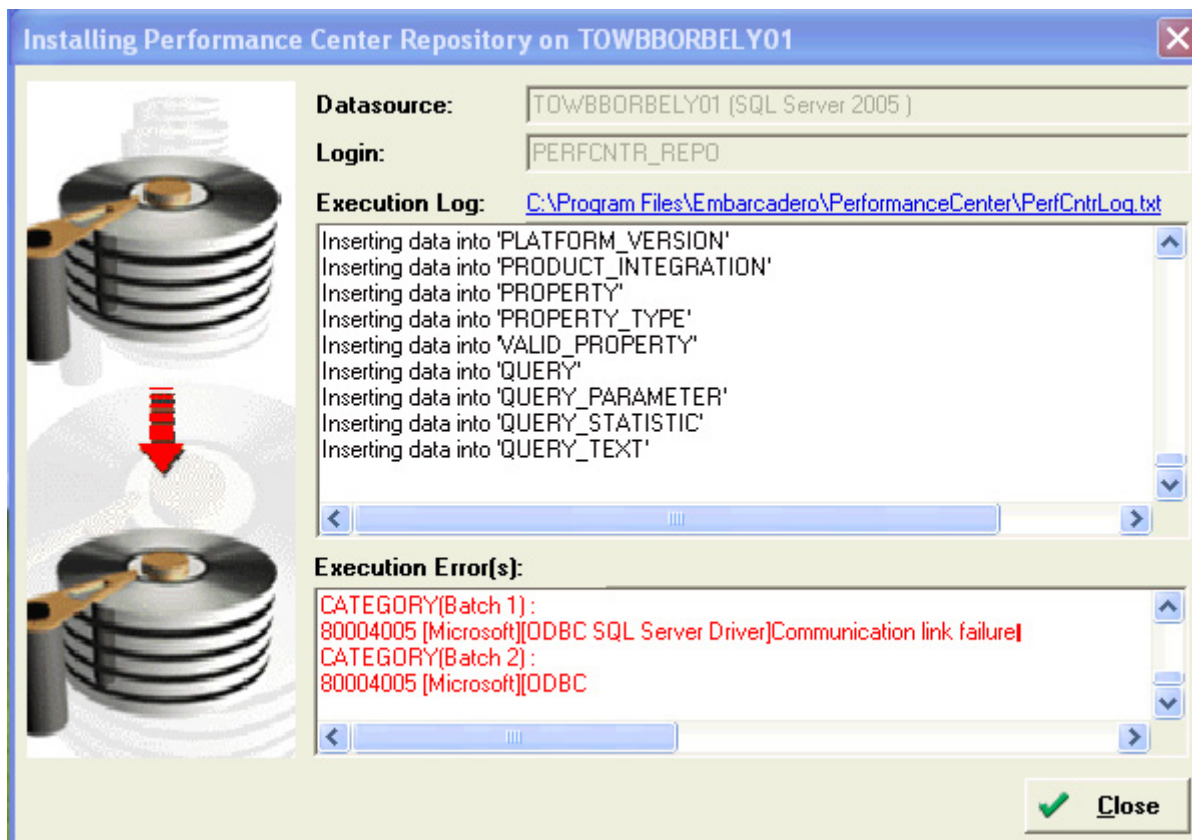
NOTE: If you choose Use Database Authentication, the Performance Center Install asks you to type the name of a login with administrative privileges in the Login field and a valid password for that login in the Password field.

- 4 In the **A new login for repository owner...**, type the name of a new login and password for the login that Performance Center will use as the Performance Center Repository owner.

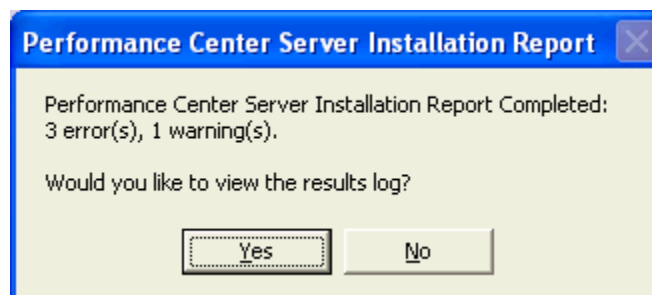
NOTE: The default login name is PERFCNTR_REPO.

- 5 Click **Next** and a dialog appears showing an execution log and execution errors.

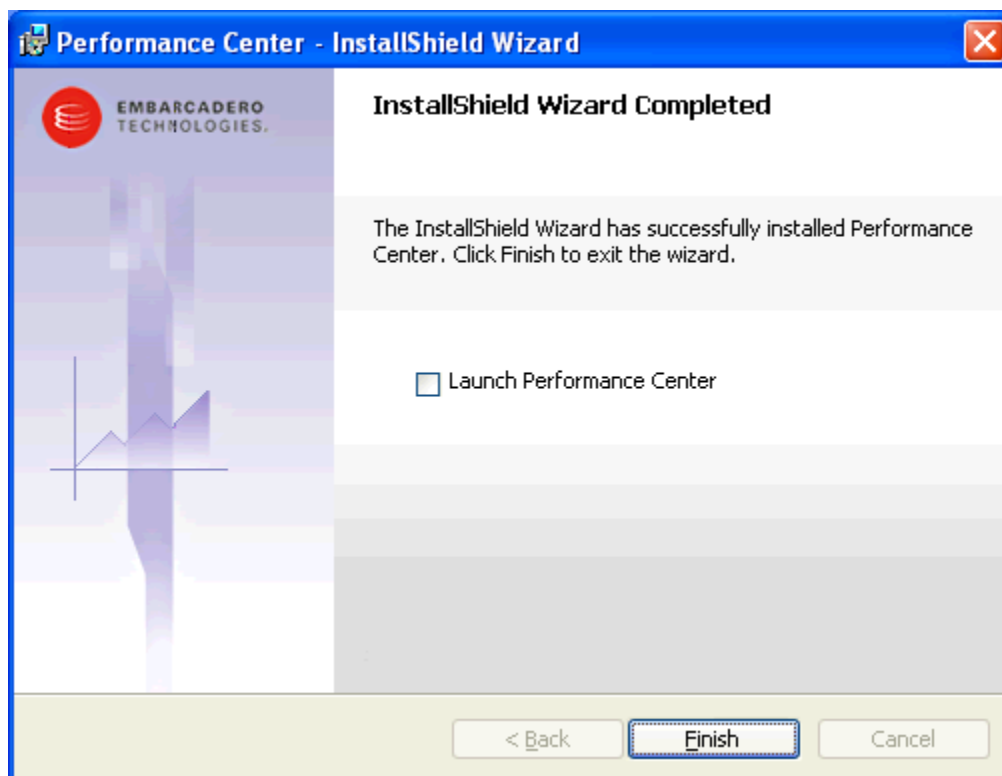
CAUTION: If Performance Center installed MDAC on your server and you did not reboot your server after completing the installation, Performance Center will not be able to install your repository database. To resolve this problem, proceed with the installation. When the installation is complete, open the Performance Center Database Wizard and install your repository database.



- 6 Once the execution is complete click **Close**. A dialog appears showing the Installation Report. Click **Yes** to display the report in the web browser.



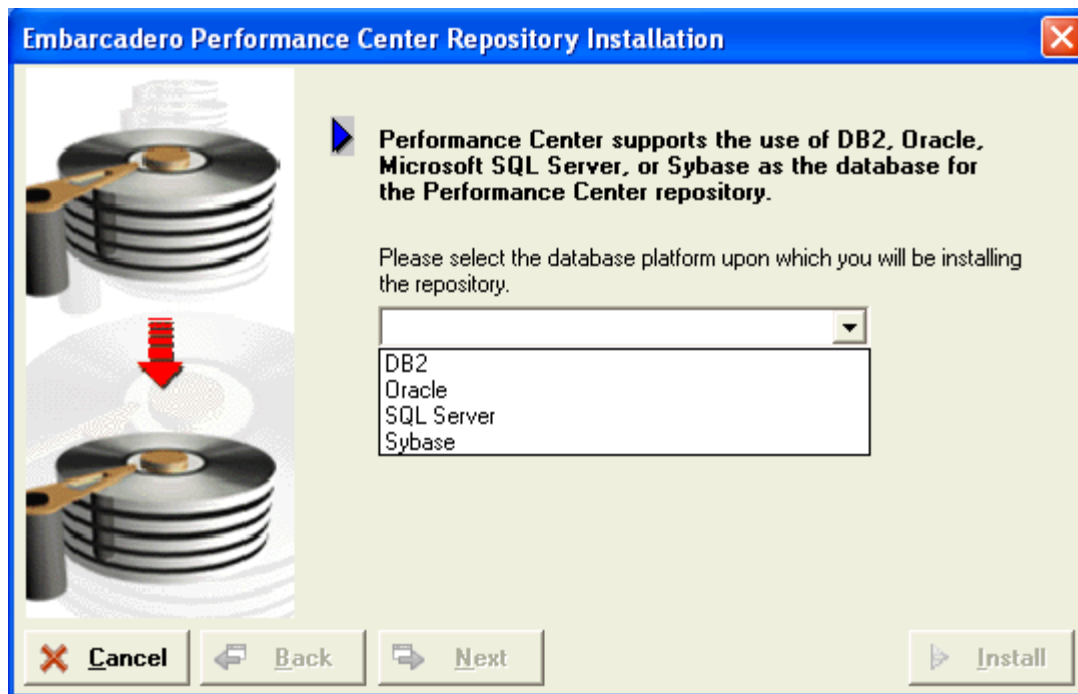
- 7 The Embarcadero Product Registration dialog also appears. For more information on registering your product see [Licensing Performance Center](#).
- 8 The InstallShield Wizard Completed dialog then appears. You can choose to launch the Performance Center at this time or click **Finish** to close the InstallShield Wizard.



Performance Center Repository - Create and Customize

If you select the **Create and customize a new Performance Center repository** option, you can select the target server where you want the installation to create the Performance Center Repository.

- 1 Click **OK** to advance to the next panel.



- 2 From the database platform list, select the target server.

CAUTION: If you are installing the Performance Center Repository on Oracle 9.0.1.1.1, you need Oracle 9i patch set version: 9.0.1.3.1 installed on your database server before you can install the repository.

- 3 Click **Next** and in the second panel select the database in which the Performance Center Repository will be installed.
- 4 Click the option that corresponds to the target login authentication:
 - **OS Authentication:** OS authentication is enabled by default, and uses the local operating system (the database server's OS) to authenticate users.
 - **Database Authentication:** Database authentication accepts a username and password, then checks these against credentials stored in the database. So when you select this option, the Performance Center Install asks you to type the name of a login with administrative privileges in the Login field and a valid password for that login in the Password field.
- 5 If you selected **Database Authentication**, type the login name and password in the corresponding boxes.

NOTE: For all supported Oracle platforms, if you select the **Use Database Authentication** option, you must use the Sys login to create the repository.

6 Click **Next**.

For DB repository: The Installation opens the [DB2](#).install panel.

For Oracle repository: The Installation opens the [Oracle](#) install panel.

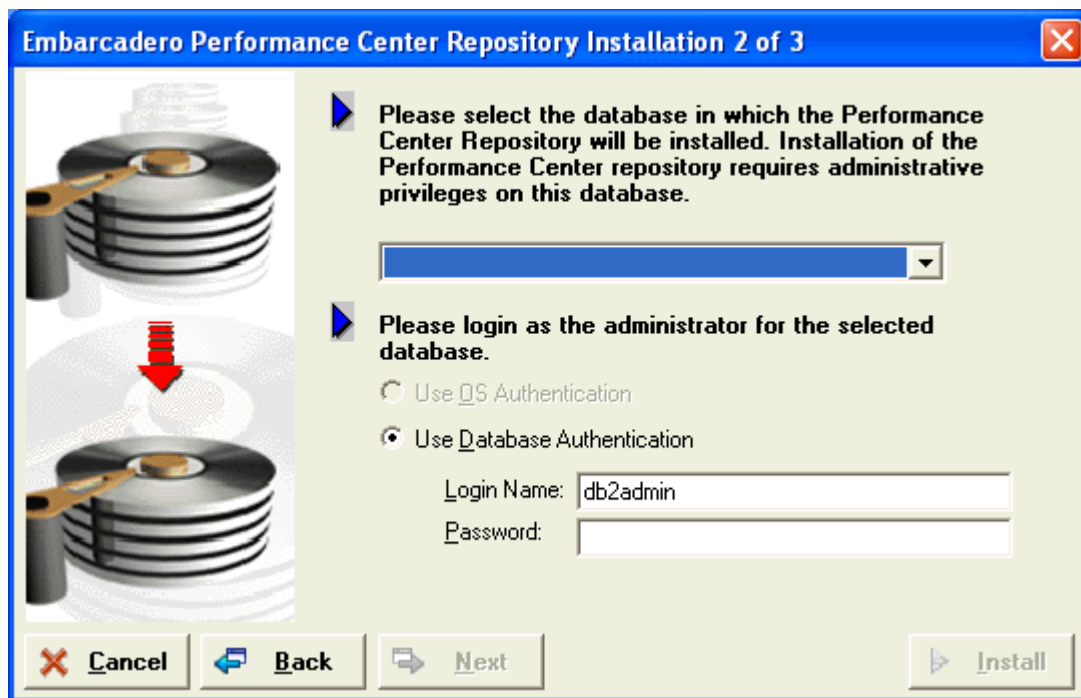
For SQL Server repository: The Installation opens the [SQL Server](#) install panel.

For Sybase repository: The installation opens [Sybase](#) install panel.

DB2

Performance Center Repository Installation 2 of 3

On this panel you can select or create a user account and supply the user login information.



1 Select a database from the list.

2 Click the option that corresponds to the target login authentication:

- Use OS Authentication
- Use Database Authentication

3 If you select **Database Authentication**, type the login name and password in the corresponding boxes.

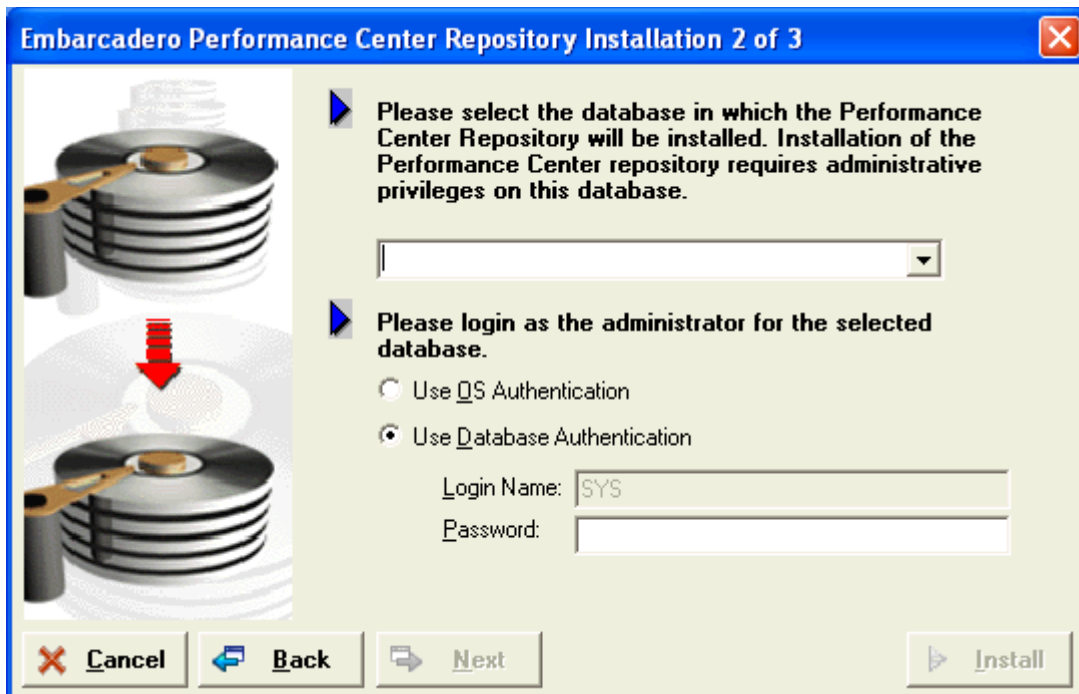
NOTE: For all supported Oracle platforms, if you select the **Use Database Authentication** option, you must use the Sys login to create the repository.

Oracle

The Oracle database installation is a two-panel wizard that guides you through creating an Oracle repository for storing information used during monitoring. During the repository installation, you have the option to create a new user as well as a new tablespace.

Performance Center Repository Installation 2 of 3

On this panel you can select or create a user account and supply the user login information.



- 1 Select a database from the list.
- 2 Click the option that corresponds to the target login authentication:
 - Use OS Authentication
 - Use Database Authentication
- 3 If you selected **Database Authentication**, type the login name and password in the corresponding boxes.

NOTE: For all supported Oracle platforms, if you select the **Use Database Authentication** option, you must use the Sys login to create the repository.

- 1 Click the **Object Owner** list, and then click the object owner.
 - To create new storage structures to use for the Performance Center Repository, see [Creating a Repository](#).
 - If you are not creating a new repository storage structure, proceed to the next step.
- 2 Click the **Table object placement** list, and then click the target repository storage structure.
- 3 Click the **Index object placement** list, and then click the target storage structure.
- 4 In the **Password** box, type the object owner password.

- 5 In the **Confirm** box, retype the object owner password.
- 6 Click **Install** to execute the SQL scripts on your server. The Installation opens the Installing Performance Center Repository dialog box and executes a series of SQL scripts, which create the collection of tables, indexes, and code that Performance Center uses to store information used for monitoring. This process can take several minutes.
- 7 When the installation finishes click **Done** and the Installation opens the [InstallShield Wizard Complete panel](#).

For licensing information, see: [Licensing Performance Center](#)

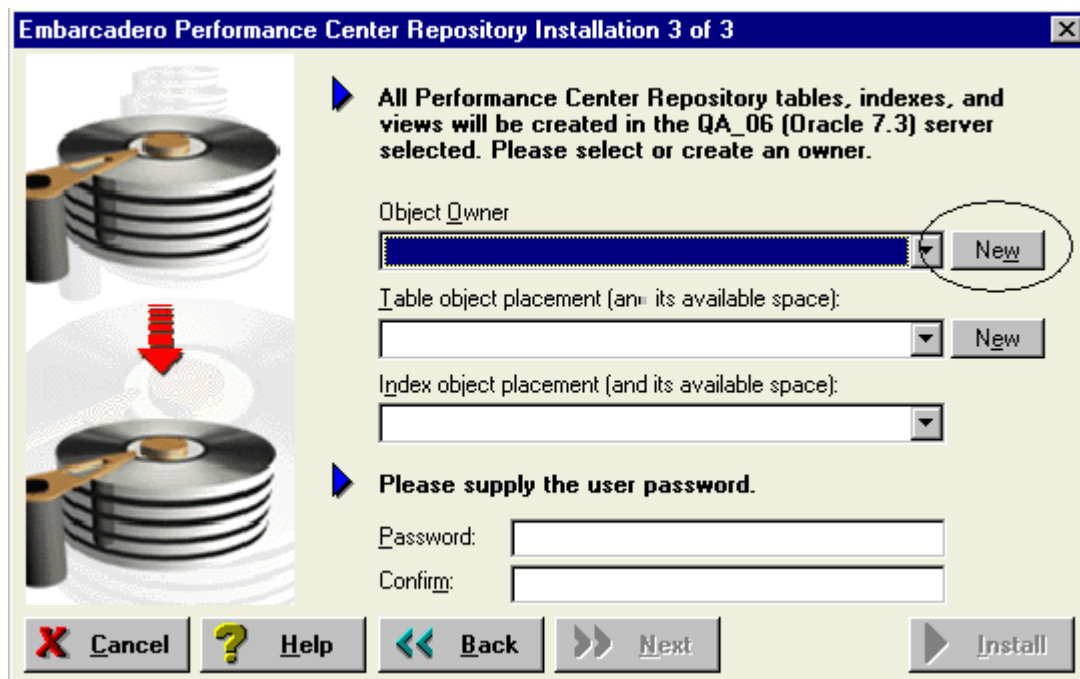
Creating an Oracle User

During the Performance Center installation you can select an existing Oracle user account, or you can create a new user account. The Installation can use this account to hold the repository objects and another to perform the actual monitoring of the database Performance Center Repository. If you choose to create a new user account, the Installation Wizard opens the Create User Wizard to guide you through the process of creating a user without requiring you to know any of the underlying commands. As you step through, the User Wizard constructs the CREATE USER statement from the information you supply.

To open the Create User Wizard during the installation process, you must work from the second panel of the database install.

Opening the User Wizard

- 1 On the second panel of the **Repository Wizard**, click **New**, next to the **Object Owner** list.



The Installation opens the [Create New User Wizard](#).

NOTE: To create a user, you must have the CREATE USER system privilege.

Oracle User Wizard - Panel 1

On this panels you can set up the user name and identify the user by password, externally or globally.

Create User - Pager 1 of 4

What is the name of the new user?

How should the new user be identified?

☒ Password ☐ Externally ☐ Globally

If you do not provide a password for the user, user access will be verified through the operating system.

Password:

Confirm:

< Back Next > Cancel

Completing Panel 1

- 1 In the **What is the name of the user?** box, type the name of the user.

NOTE: The name of the user can be up to 30 characters long.

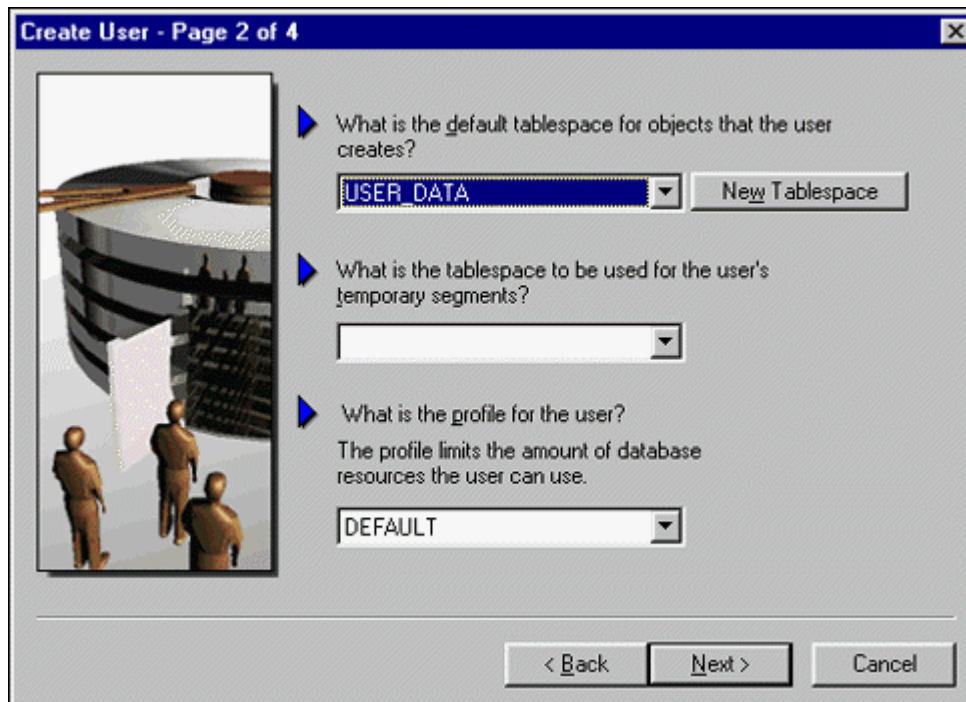
- 2 In the **How should the user be identified?** box, click the appropriate option. The options are described in the following table:

Option	Description
Password	Indicates that Oracle should identify the user with the password you provide. In the Password box and in the Confirm box, type the user's password.
Externally	Indicates that Oracle should verify the database user name against an existing operating system user name.
Globally	Indicates that Oracle will permit access to the user by obtaining user name and password information from the security domain central authority. This option is only available in Oracle8 and later. In the External Name box, type the external name of the database user.

- 3 Click **Next** and the Installation opens the [next panel](#) of the wizard.

Oracle User Wizard - Panel 2

On the second panel of the User Wizard you can assign tablespaces and a profile to the user.



Completing Panel 2

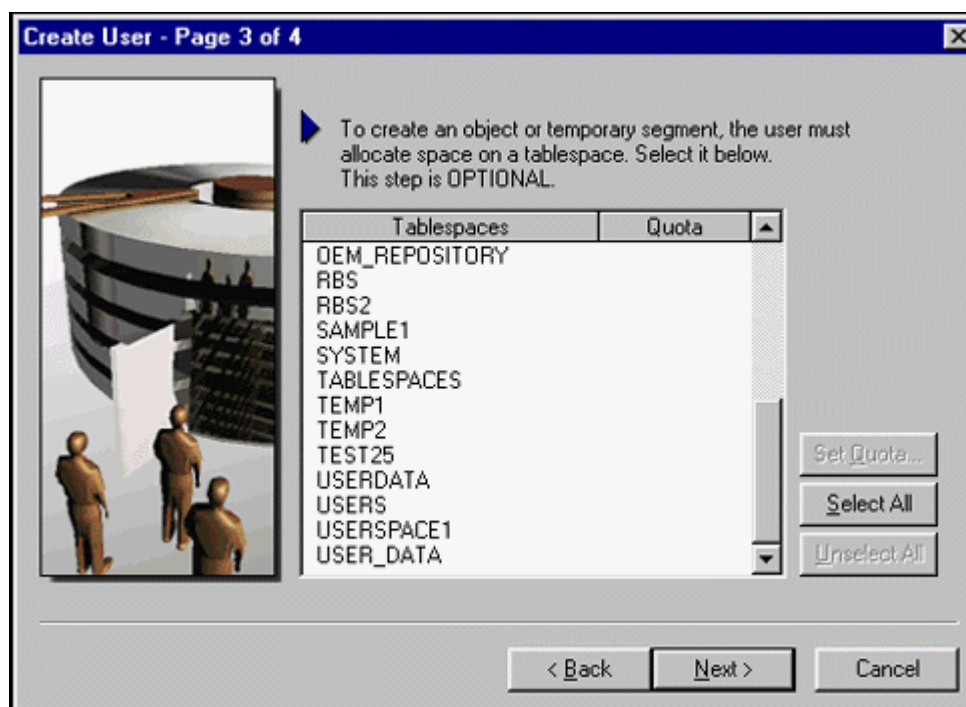
Performance Center gives you the option to create a new tablespace for the objects that the new user creates.

- To create a new tablespace, proceed to [Creating a Repository](#).
- If you do not want to create a new repository, proceed to step 1.

- 1 In **What is the default tablespace for objects that the user creates?** click the list, and select the target tablespace.
- 2 In **What is the default tablespace for the user's temporary segments?** click the list, and select the target tablespace.
- 3 In **What is the profile for the user?** click the list, and select the target profile.
- 4 Click **Next** and the [next panel](#) of the wizard appears.

Oracle User Wizard - Panel 3

In this panel you will assign tablespace quotas to the user.



You can choose from three options:

Option	Steps
Set Quota	Choose the tablespace where you want to allocate space for the user.
Select All	Allocate space for the user on all tablespaces.
Unselect All	Clear any selections.

Be sure to set space quotas for the tablespaces you would like to use to house the table and index repository objects. The temporary tablespace should have either set or unlimited quotas.

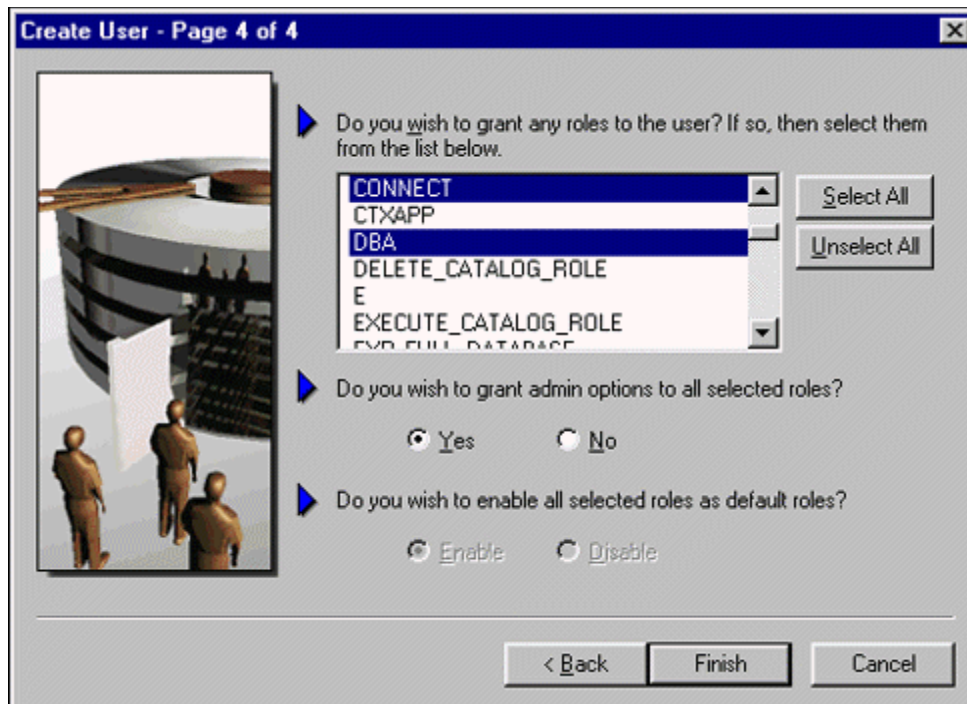
Completing Panel 3

- 1 Click the option that corresponds to the target quota option:
 - Set Quota
 - Select All
 - Unselect All
- 2 If you selected **Set Quota**, do the following:
 - In the **Tablespace** box, click the target tablespace. Click **Set Quota** to open the **Set Tablespaces Quota** dialog box.
 - Click **Unlimited** or **Other**.
 - If you click **Other**, enter the value of the quota, and then click list to indicate **KB** or **MB**.
 - Click **OK** to close the **Set Tablespaces Quota** dialog box.
- 3 If you selected **Select All**, in the **Tablespace** box, click **Select All** to select all the tablespaces.
- 4 If you selected **Unselect All**, in the **Tablespace** box, click the **Unselect All** to unselect all of the tablespaces.

- 5 Click **Next** and the Installation opens the [next panel](#) of the wizard.

Oracle User Wizard - Panel 4

In the fourth panel of the User Wizard you can grant roles to the user.



Completing Panel 4

- 1 In **Do you wish to grant any roles to the user?** click any roles that you want to grant to the user. Or to grant all roles to the user, click **Select All**.

NOTE: To clear your selections, click **Unselect All**.

- 2 In **Do you wish to grant admin options to all selected roles?**, click one of the following:

Option	Result
Yes	Grants admin options to the selected roles.
No	Ensures that the selected roles are not granted admin options.

- 3 In **Do you wish to enable all selected roles as default roles?**, click one of the following:

Option	Description
Enable	Enables the selected roles as default roles.
Disable	Disables the selected roles as default roles.

- 4 Click **Finish** and the Execute SQL dialog appears.
- 5 To create the database, click **Execute**. The new object owner is created and a message box appears.

- 6 Click **OK** and you are returned to the Performance Center Installation Wizard.

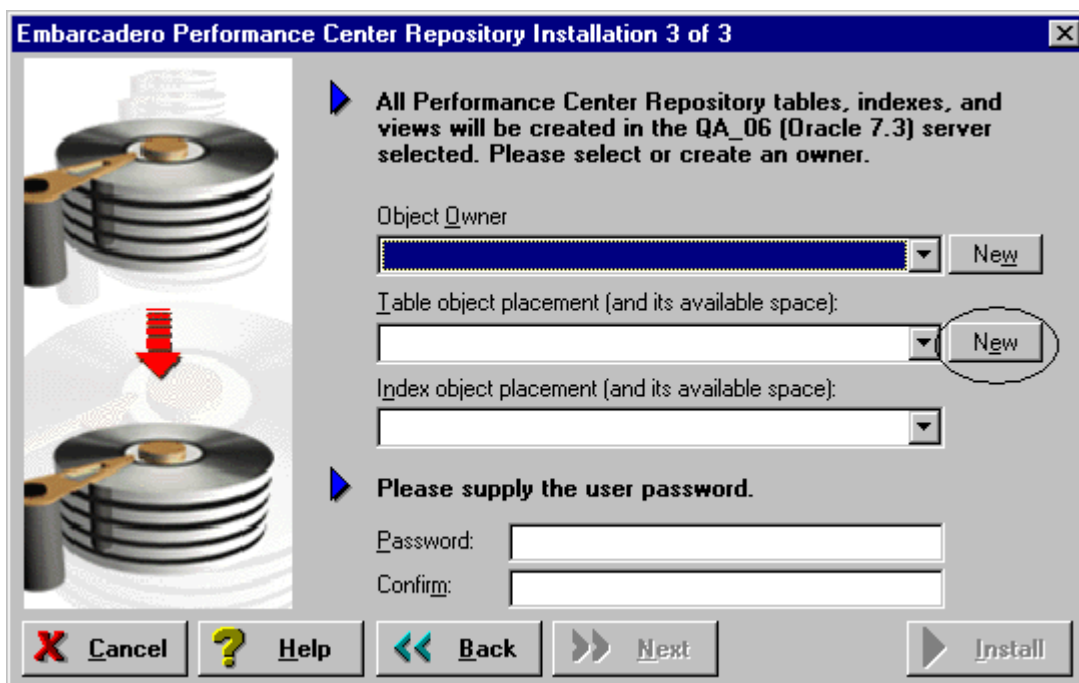
Creating a Repository

During the Performance Center installation you must select an existing storage area to use for the repository storage, or create a new storage structure. Performance Center uses the repository storage to store information used for monitoring. If you choose to create a new repository storage, the Create Tablespace Wizard appears to guide you through the process of creating a repository storage structure without requiring you to know any of the underlying commands. As you step through the process, the Tablespace Wizard constructs the CREATE TABLESPACE statement from the information you supply.

To open the Tablespace Wizard during the installation process, you must be on the second panel of the repository install.

Opening the Tablespace Wizard

- On the second panel of the **Repository Wizard**, click **New**, located next to the **Tablespace Object placement** (and its available space) list.

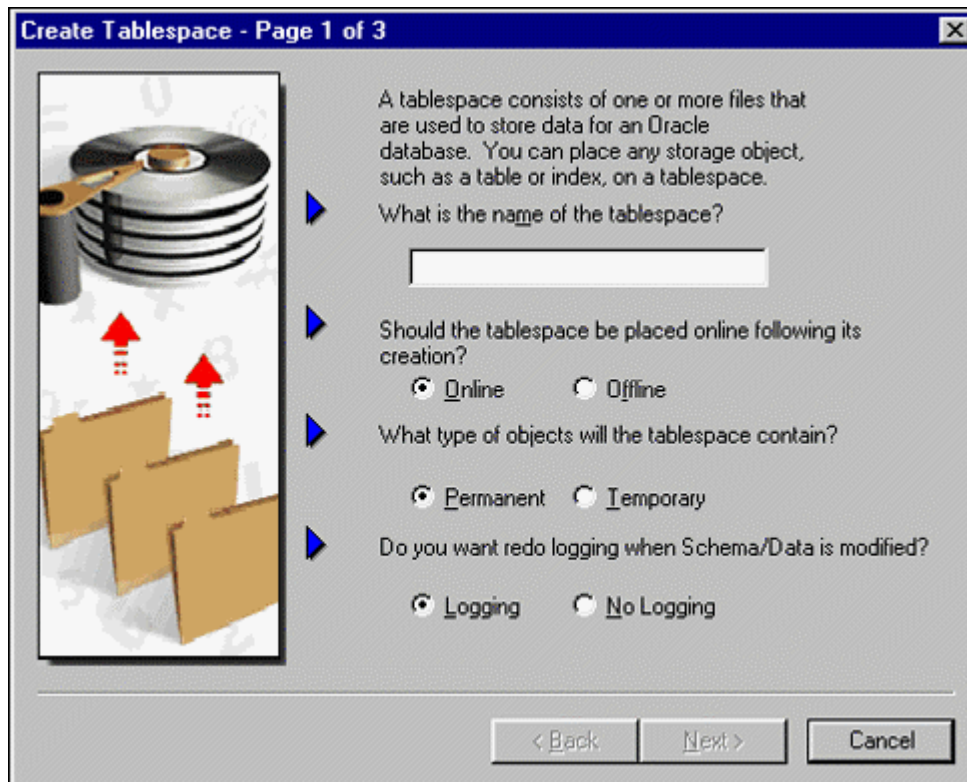


The [Tablespace Wizard](#) appears.

Oracle Tablespace Wizard - Panel 1

On the first panel of the Tablespace Wizard you can name the tablespace, specify which types of objects will be stored on the tablespace, where to place the tablespace (online or offline), and activate the redo logging feature.

NOTE: This panel is only for Oracle8 or later.



For the Performance Center Storage Structures you should select ONLINE, PERMANENT, and LOGGING.

Completing Panel 1

- 1 In **What is the name of the tablespace**, enter the name.
- 2 In **Should the tablespace be placed online following its creation**, click one of the following options:

Option	Definition
Online	Indicates the tablespace should be online.
Offline	Indicates the tablespace should be offline.

- 3 In **What types of objects should the tablespace contain**, click one of the following options:

Option	Definition
Permanent	Indicates that the objects contained in the tablespace should be permanent.
Temporary	Indicates that the objects contained in the tablespace should be temporary.

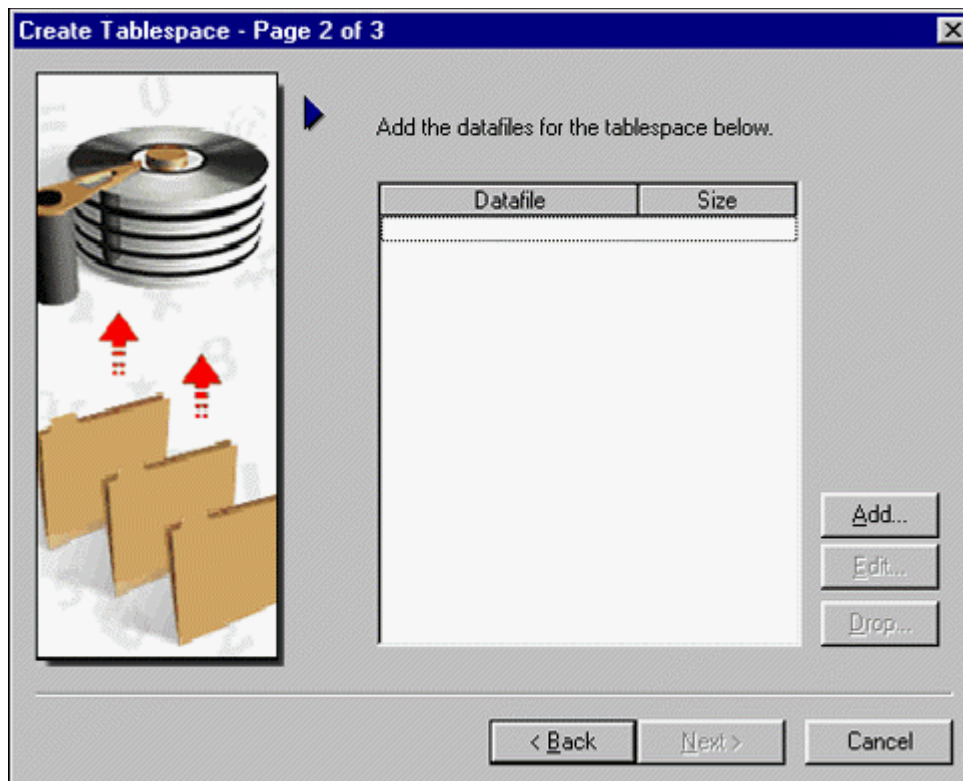
- 4 In **Do you want redo logging when Schema/Data is modified**, click one of the following options:

Option	Definition
Logging	Indicates that you want redo logging when Schema/Data is modified.
No Logging	Indicates that you do not want redo logging when Schema/Data is modified.

- 5 Click **Next** and the Installation opens the [next panel](#) of the wizard.

Oracle Tablespace Wizard - Panel 2

On the second panel of the Tablespace Wizard you can add the datafiles that comprise the tablespace, and specify the parameters for the datafiles.



Completing Panel 2

- 1 Click **Add** and the Create Data File dialog appears.
- 2 In the **Datafile Name** box of the **Add Datafile** dialog, type the datafile name.
- 3 In the **Datafile Size** box, enter the datafile size.

NOTE: The datafile must be greater than or equal to 50 MB.

- 4 Select either **MB** or **KB** from the list.
- 5 In **Reuse Existing File?**, select one of the following options:

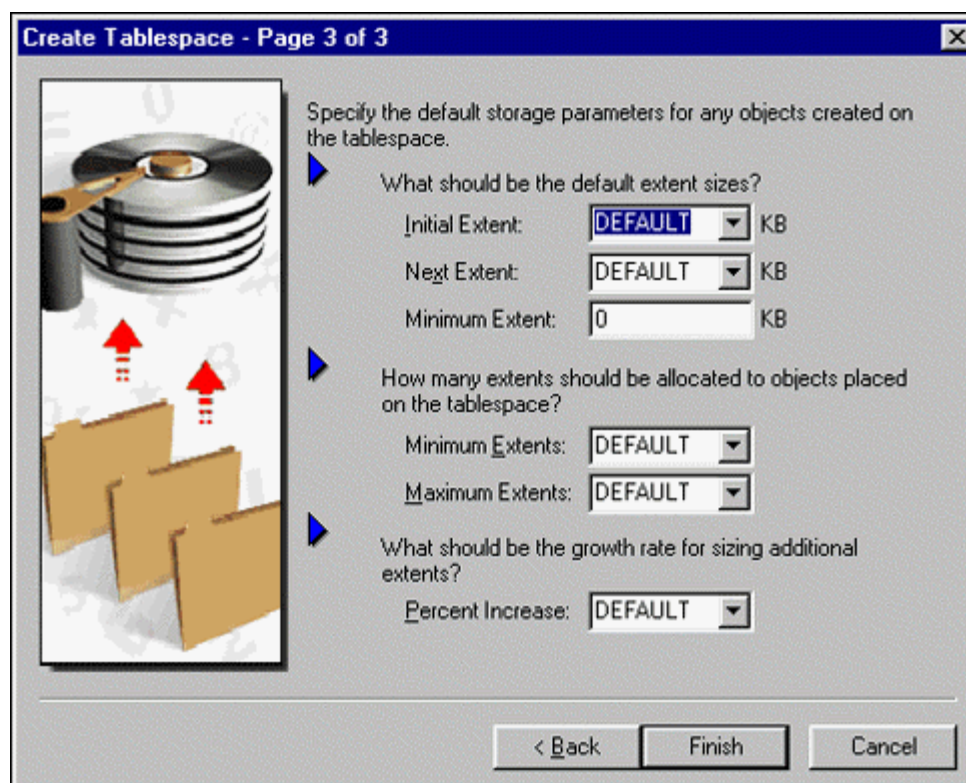
Option	Definition
Yes	To reuse the existing file.
No	If you do not want to reuse the existing file.

- 6 To auto-extend the datafile, select the **Autoextend** check box.
- 7 In **Disk Space to Allocate to the Datafile When More Extents are Required**, enter the disk space to allocate to the datafile when more extents are required.
- 8 Click the list to indicate **MB** or **KB**.

- 9 To specify the maximum disk space allowed for allocation to the datafile, click either **Unlimited** or **Other**.
NOTE: If you click **Other**, enter the amount in the **Other** box, and then click the list to indicate MB or KB.
- 10 To add the datafile to the tablespace definition, click **OK**.
- 11 To close the **Add Datafile** dialog, click **Close** and you are returned to the second panel of the Tablespace Wizard.
- 12 To add other datafiles, click **Add**.
- 13 When you finish adding datafiles, click **Next** to open the [next panel](#) of the wizard.

Oracle Tablespace Wizard - Panel 3

On the third panel of the Tablespace Wizard you can specify how Oracle should manage the growth of the tablespace.



Completing Panel 3

- 1 In **What should be the default extent sizes:**
 - Click the list or enter the value in the **Initial Extent** box.
 - Click the list or enter the value in the **Next Extent** box.
 - Enter the value in the **Minimum Extent** box.
- 2 In **How many extents should be allocated to the objects placed on the tablespace:**
 - Click the list or enter the value in the **Minimum Extents** box.
 - Click the list or enter the value in the **Maximum Extents** box.

- 3 In **What should be the growth rate for sizing additional extents**, click the list or enter the percentage in the box.
- 4 Click **Finish** and the Execute SQL dialog appears.
- 5 To create the database, click **Execute** and the tablespace is created and a message appears.
- 6 Click **OK**.
 - If you are creating a tablespace from the Database Install 3 of 3 panel, the Installation returns to the Performance Center Repository Installation Wizard.
 - If you are creating a tablespace from the Create User Panel, the Installation returns to the second panel of the [Create User Wizard](#).

Performance Center Repository - Use Existing Repository

If you select the **Use an existing Performance Center Repository**, you can select the target repository server platform on which to install the Performance Center Repository.

- 1 Click **OK** to advance to the [Performance Center Repository Installation](#)

CAUTION: If you are installing the Performance Center Repository on Oracle 9.0.1.1.1, you need Oracle 9i patch set version: 9.0.1.3.1 installed on your database server before you can install the repository.

If you do not have an existing repository, or if you selected Create New Repository on the Repository Wizard, the installation opens the Create Repository Wizard, which is a multi-panel wizard to guide you through the installation process and prompts you to:

- Set up or create a user account owner.
- Select or create storage for the Performance Center Repository.
- Install the Performance Center Repository on an existing database.
- Register one or more database(s) for monitoring.

CAUTION: If Performance Center installed MDAC on your server and you did not reboot your server after completing the installation, Performance Center will not be able to install your repository database. To resolve this problem, proceed with the installation. When the installation is complete, open the Performance Center Database Wizard and install your repository database.

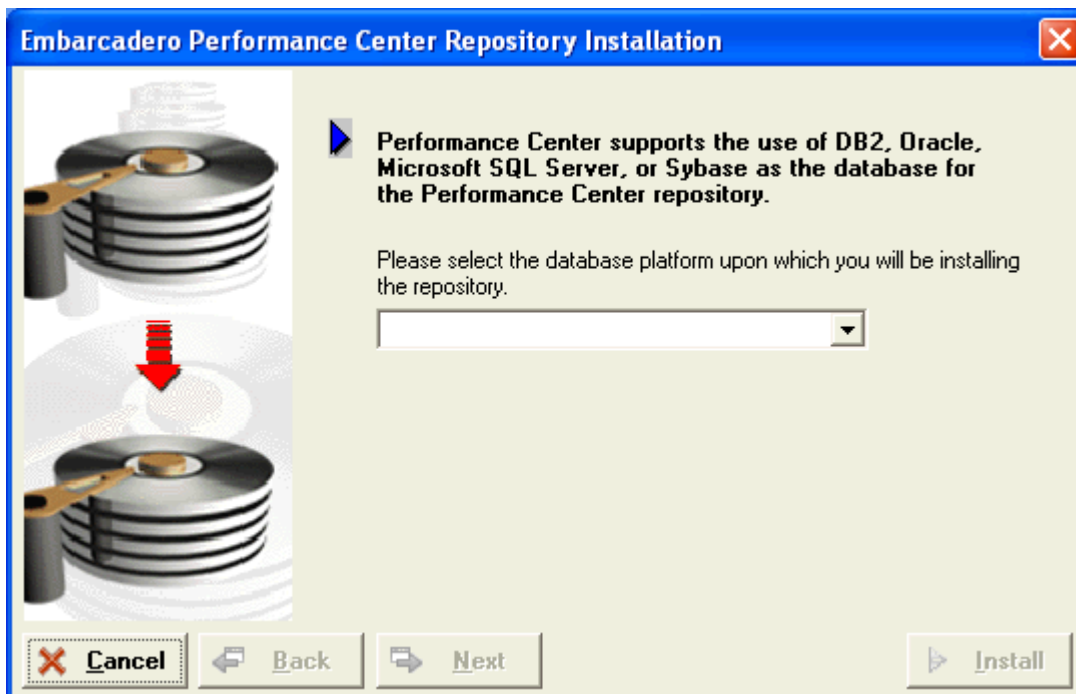
For Create a New Repository: If you are creating a new repository, you must select the [target repository server platform](#). You can create a new repository on either a DB2, Oracle, SQL Server, or Sybase database server.

For Upgrade an Existing Repository: If you are upgrading your repository server, this panel is displayed if it cannot detect an existing repository on the machine where you are installing Performance Center. To upgrade an existing repository, you must manually point to it.

Performance Center Repository Installation

On this panel you can select the target server where you want to create the Performance Center Repository.

- 1 Performance Center supports four types of repositories: DB2, Oracle, SQL Server, and Sybase.



- 1 From the **database platform** list select the platform and click **Next**.

CAUTION: If you are installing the Performance Center Repository on Oracle 9.0.1.1.1, you need Oracle 9i patch set version: 9.0.1.3.1 installed on your database server before you can install the repository.

- 2 Click the option that corresponds to the target login authentication:

- Use OS Authentication
- Use Database Authentication

If you selected **Database Authentication**, enter the login name and password in the corresponding boxes.

NOTE: For all supported Oracle platforms, if you select **Use Database Authentication**, you must use the Sys login to create the repository.

- 3 Click **Next**.

For DB2 repository the installation opens the [DB2](#) install panel.

For Oracle repository the Installation opens the [Oracle](#) install panel.

For SQL Server repository the Installation opens the [SQL Server](#) install panel.

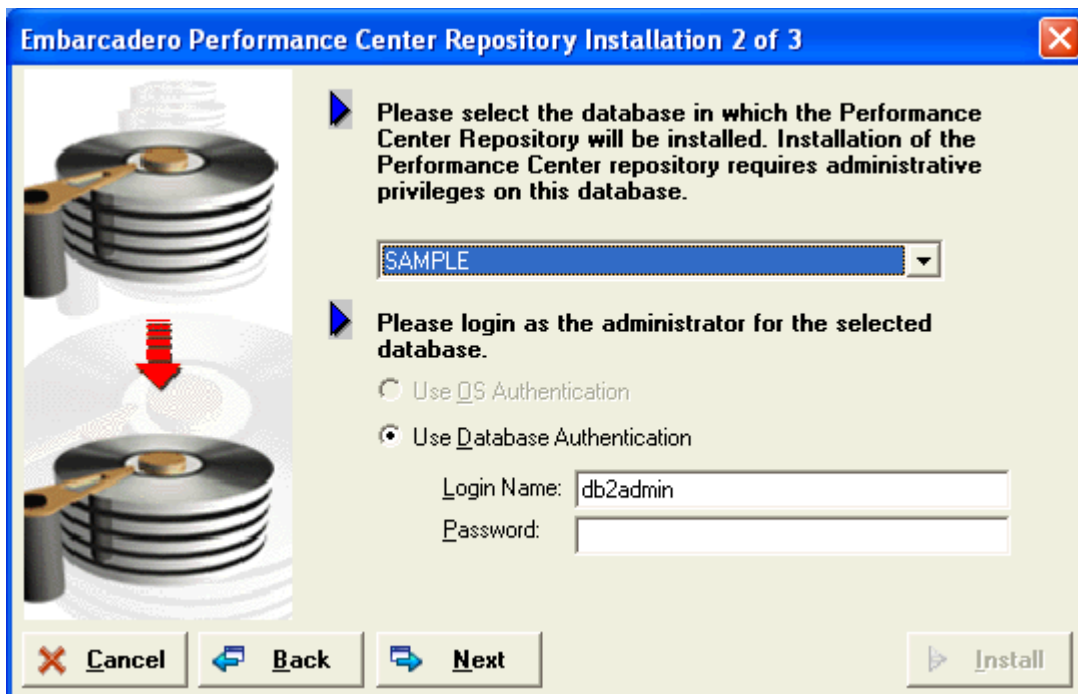
For Sybase repository the installation opens [Sybase](#) install panel.

DB2

The DB2 database installation is a three-panel wizard that guides you through creating a DB2 repository for storing information used during monitoring.

Performance Center Repository Installation 2 of 3

In this panel you select the database where the Performance Center Repository will be installed. Note that this installation requires administrative privileges on this database.

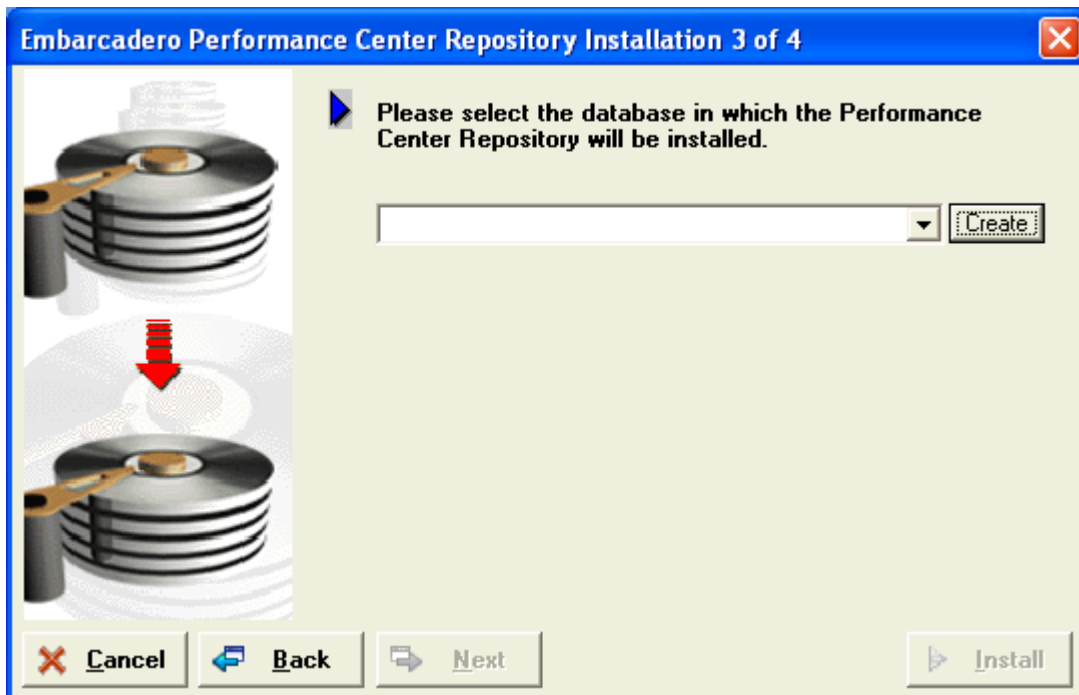


SQL Server

The SQL Server database installation is a four-panel wizard that guides you through creating a SQL Server repository for storing information used during monitoring. During the repository installation, you have the option to create a new user as well as a new tablespace.

Performance Center Repository Installation 3 of 4

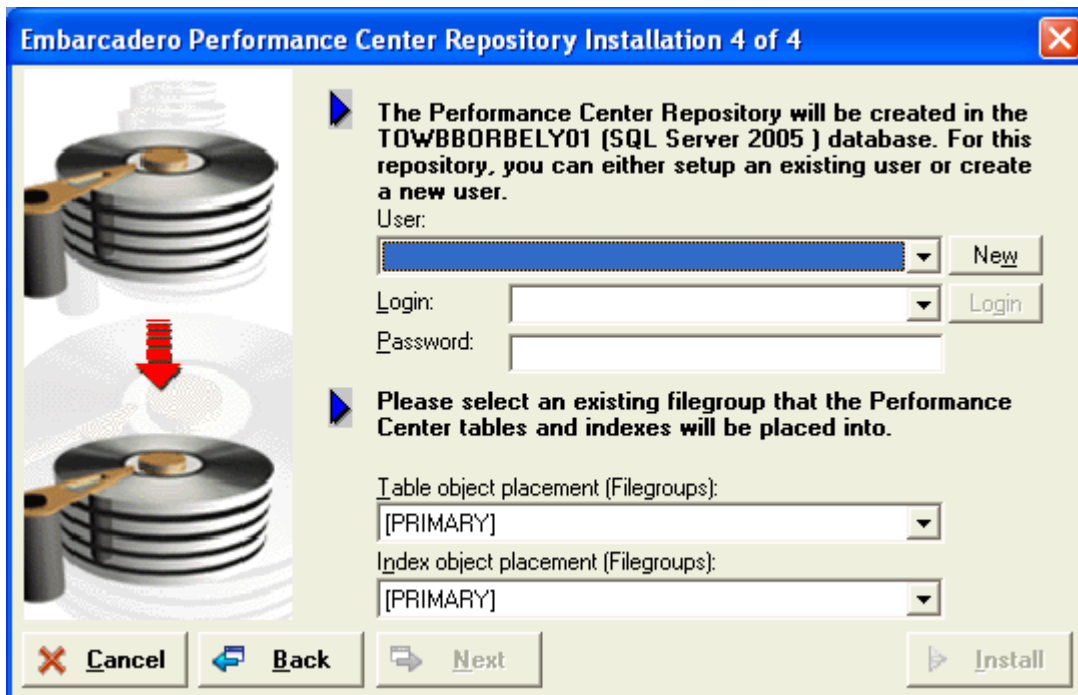
In this panel you select the SQL Server database where you want the installation to create the Performance Center Repository. If you do not want to use an existing database, you can create a new one.



- To create a database, see [Creating a Database](#).
 - If you are not creating a database, proceed to step 1.
- 1 Click the **Database** list, and then click the target database.
 - 2 Click **Next** and the [Embarcadero Performance Center Repository Installation 4 of 4](#) panel appears.

Performance Center Repository Installation 4 of 4

In this panel you select the SQL Server object owner, table and index object placement as well as set the user Login and Password for the database.



- To create a new object Owner, see [Creating a SQL Server User](#).
 - If you are not creating a new user account, proceed to step 1.
- 1 Click the **Table object placement (Filegroups)** list, and select the target repository storage structure.
 - 2 Click the **Index object placement (Filegroups)** list, and select the target storage structure.
 - 3 In the **Login** box, enter the object owner login.
 - 4 In the **Password** box, enter the object owner password.
 - 5 In the **Confirm** box, re-enter the object owner password.
 - 6 Click **Install** to execute the SQL scripts on your server. The Installing Performance Center Repository dialog opens and a series of SQL scripts are executed, which create the collection of tables, indexes, and code that Performance Center uses to store information used for monitoring. This process can take several minutes.
 - 7 When the installation finishes, on the **Performance Center Repository** dialog, click **Done**. The installation opens [InstallShield Wizard Complete](#).

Creating a SQL Server Database

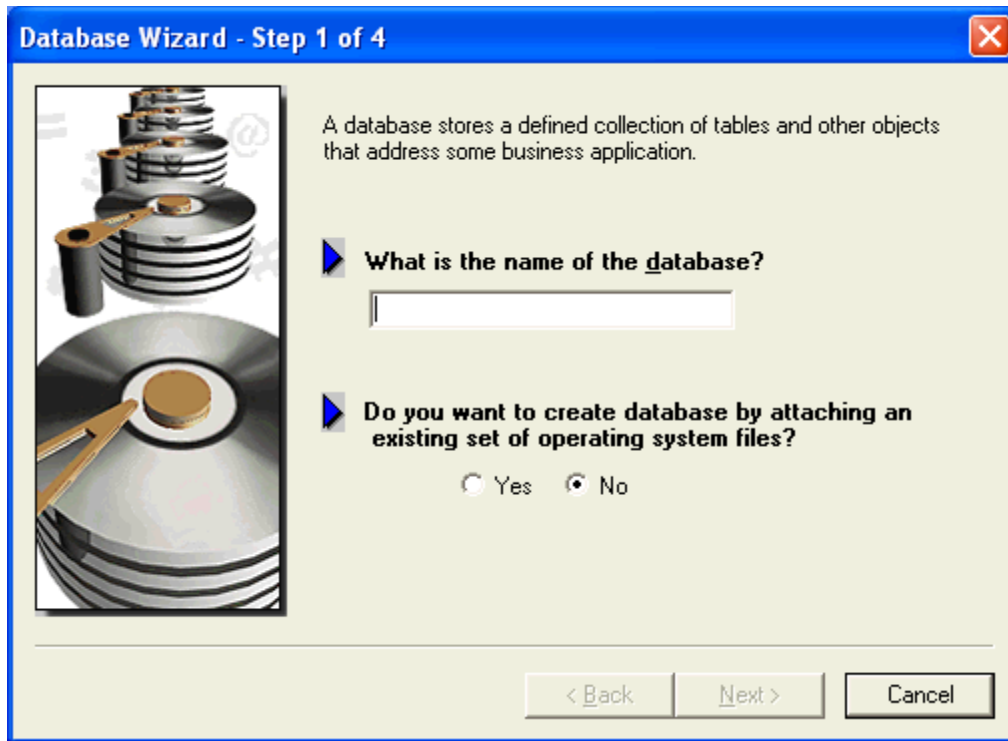
During the Performance Center installation you can create a new SQL Server database. The Installation can use this database as the repository. If you choose to create a new database, the Installation Wizard opens the Create Database Wizard to guide you through the process of creating a database without requiring you to know any of the underlying commands. To open the Create Database Wizard during the installation process, you must work from the first panel of the database install.

Opening the Database Wizard

- On the third panel of the **Repository Wizard**, click **Create**, located next to the **Database** list.

SQL Server Database Wizard - Panel 1

On the first panel of the Database Wizard you can name the database and attach an existing set of operating system files.



Completing Panel 1

- 1 In **What is the name of the database?**, enter the name of the database.
- 2 To create a database by attaching a set of existing operating system files, click **Yes**.
- 3 If you do not want to attach a set of existing files, select **No**. This is the default setting.
- 4 Click **Next** and the [Add Database Files](#) appears.

Add Database and Transaction Log Files

On the [Add Database file](#) and [Add Transaction Log file](#) dialogs you can add files to your SQL Server database. SQL Server 7 maps databases over a set of operating system files. SQL Server does not mix data and log information on the same file, and only one database uses individual files. This set of operating system files consists of primary data files, secondary data files, and logfiles. Each database consists of one primary data file that acts as the main database storage unit for the database and can refer to other database files. The main function of secondary data file is to store data that cannot fit in the primary data file. You can have multiple secondary data files. The logfile contains the information used to recover the database. Each database must have at least one logfile.

If you do not have an existing Database or Transaction Log file, the installation automatically opens these dialog boxes before opening the next panel of the wizard.

Adding a Database File

Add Database File

Database: test

Filegroup

Name: PRIMARY

Default: ☐ Read Only: ☐

Database File

Name:

File Path: C:\Program Files\Microsoft SQL Server\MSSQL\'.mdf'

Size: 10 ME

☒ Allow Growth

Growth Rate: 10 %

Max Size: ☒ Unlimited ☐ Size 11 ME

OK Close

- 1 To change the filegroup name, in **Filegroup**, click **FileGroup**, and select the new filegroup name.
- 2 To set the filegroup as the default, select **Default**.
- 3 In the **Database File** box, enter the name of the database file in the **Name** box.

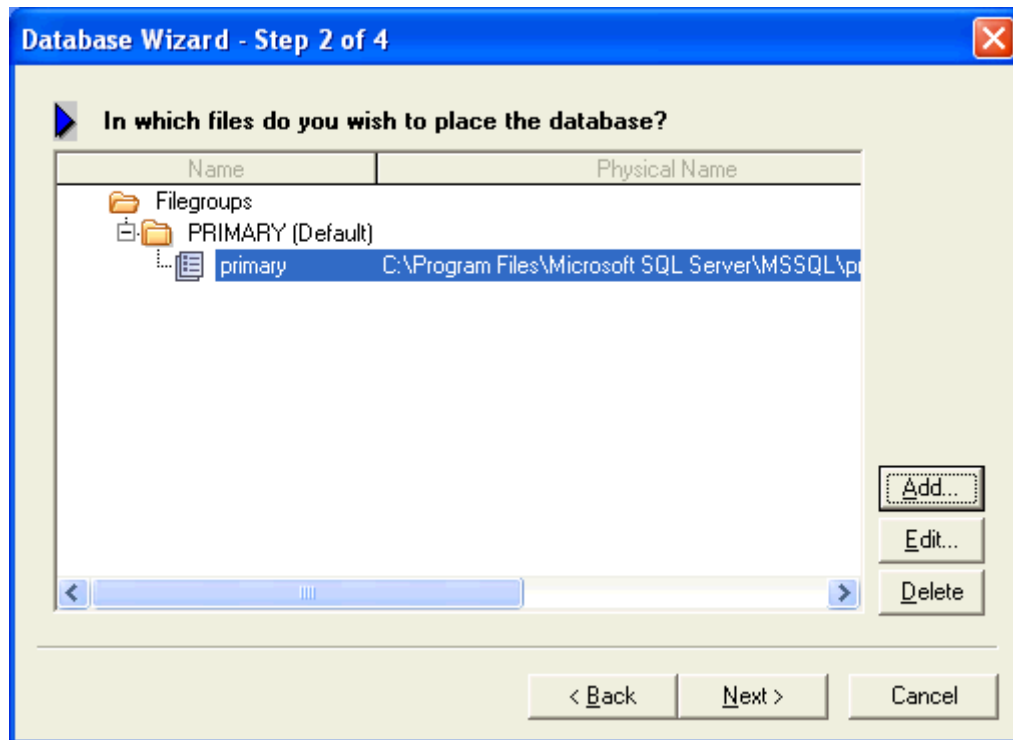
NOTE: In the File Path box, the Installation inserts the file name you specified above and the default location of the primary database file. To change this location, enter the full path in the File Path box. The Installation automatically gives the database file the mdf file name extension.
- 4 In **Size**, enter the value of the size of the database file, and select the list to indicate **MB** or **KB**.
- 5 To set a growth rate, select **Allow Growth**, and in the **Growth Rate** box, enter the percentage value of the growth rate, and then click the list to indicate **MB** or **KB**.
- 6 To allow the database file grow to an unlimited size, click **Unlimited**, which lets a database file grow until it has used all available space on the disk.
- 7 To limit the growth of the file to a certain size, click **Size**, type the value of the size of the database file, and then click the list to indicate **MB** or **KB**.
- 8 Click **OK** and the database file is added.
- 9 To continue adding database files, repeat steps 1-8.
- 10 When you finish adding database files, click **Close**. The Installation closes the [Add Database file](#) dialog box and opens the [next panel](#) of the wizard.

Adding a Transaction Log file

- 1 In the **Database File** box, enter the name of the transaction log in the **Name** box.
NOTE: In the File Path box, the transaction logfile name you specified above and the default location of the logfile are automatically inserted. To change this location, enter the full path in the box. The installation automatically gives the logfile an extension of *.ldf.
- 2 In **Size**, enter the value of the size of the transaction, and then click the list to indicate **MB** or **KB**.
- 3 To set a growth rate, select the **Allow Growth** check box, and in the **Growth Rate** box, enter the percentage value of the growth rate, and then click the list to indicate **MB** or **KB**.
- 4 To allow the database file grow to an unlimited size, click **Unlimited**, which lets a database file grow until it has used all available space on the disk.
- 5 To limit the growth of the file to a certain size, click **Size**, enter the value of the size of the database file, and then click the list to indicate **MB** or **KB**.
- 6 Click **OK** and the database file is added.
- 7 Click the **Close**. The Add Transaction Log file dialog closes and the [next panel](#) of the wizard appears.

SQL Server Database Wizard - Panel 2

You can add, edit, or delete database files on the second panel of the Database Wizard.

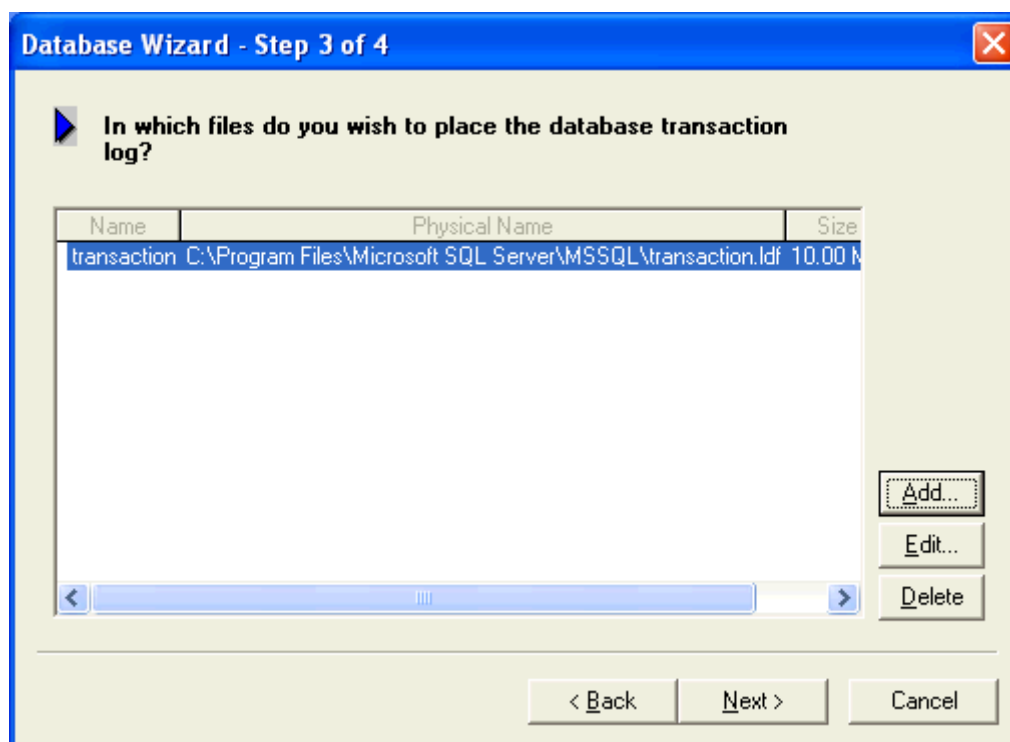


Completing Panel 2

- 1 To edit an existing database file, select the file, and click **Edit**.
- 2 To delete an existing database file, select the file, and click **Delete**.
- 3 When you finish adding database files, click **Next** and the [Add Transaction Log File](#) dialog appears.

SQL Server Database Wizard - Panel 3

You add, edit, or delete transaction log files on the third panel of the Database Wizard.

**Completing Panel 3**

- Click **Next** and the [next panel](#) of the wizard appears.

SQL Server Database Wizard - Panel 4

Specify database options on the fourth panel.



Completing Panel 4

- 1 In **Which database options do you wish to activate**, select the appropriate check boxes or select **Check All**.
- 2 When you finish specifying database options, click **Finish** and the Execute SQL dialog appears.
- 3 To create the database, click **Execute**. A new database is created and a message appears.
- 4 Click **OK** and you are returned to the [Performance Center Repository Installation Wizard](#).

Creating a SQL Server User

During the Performance Center installation you can create a new user account. The Installation then uses this account to hold the repository objects and to perform the actual monitoring of the database Performance Center Repository. If you choose to create a new user account, the Create User Wizard opens to guide you through the process of creating a user without requiring you to know any of the underlying commands. To open the Create User Wizard during the installation process, you must work from the second panel of the database install.

Opening the User Wizard

- On the fourth panel of the **Repository Wizard**, click **New**, next to the **User** list.

SQL Server User Wizard - Panel 1

On the first panel of the User Wizard you can select the login ID or create a new one, and set a user name.



- 1 From the **What is the login ID for the new user?** list, select the target login name. If there is no login ID in the list, or if you want to create a new login ID, select **<New>** from the list.

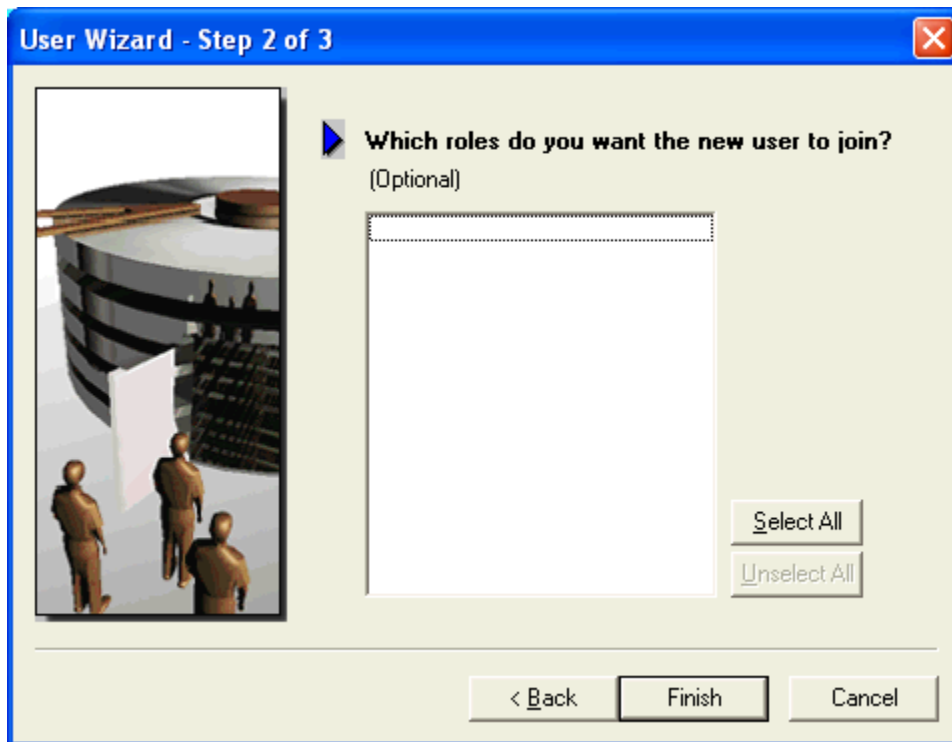
For Creating a New Login ID the [Login Wizard](#) appears.

For an Existing Login proceed to step 2.

- 2 In **What is the name of the user**, enter a user name.
- 3 Click **Next** and the [next panel](#) of the wizard appears.

SQL Server User Wizard - Panel 2

On the second panel of the User Wizard you can grant any applicable system privileges to the user.



Completing Panel 2

- 1 To assign system privileges, in **Which roles do you want the new user to join?** select the appropriate check box.
- 2 Click **Finish** and the Execute SQL dialog appears.
- 3 To create the database, click **Execute** and the user is created and a message appears.
- 4 Click **OK** and you are returned to the [Performance Center Repository Installation Wizard](#).

SQL Server Login ID

During the Performance Center installation you can create a new SQL Server login ID. The Installation uses this login ID for the SQL Server user. If you do not have a valid login ID, or if you choose to create a new login ID, the Installation Wizard opens the Login Wizard to guide you through the process of creating a login ID without requiring you to know any of the underlying commands. To open the [Login Wizard](#) during the installation process, you must work from the first panel of the [Create User Wizard](#), which is on the last panel of the [SQL Server Repository install](#).

In the SQL Server Login Wizard you create logins and specify security options without knowing the underlying commands.

On the SQL Server Login Wizard you can:

- Name the login.
- Specify the type of login to create.
- Define a login password.
- Select the databases on which to create users.
- Select the user type.

- Specify database roles.

For more information, see:

- [Opening the SQL Server Login Wizard](#)
- [SQL Server Login Wizard - Panel 1](#)

Opening the SQL Server Login Wizard

- 1 On the **Datasource** menu, select **Register** and the Register Datasource dialog appears.
- 2 On the General tab select **SQL Server** from the **Datasource Type** drop-down list.
- 3 Select a datasource from the **Datasource Name** drop-down list, and then click **Login**. Performance Center connects to the target datasource.
- 4 Click **New** to the right of the **User Name** box. The first panel of the Login Wizard appears.

SQL Server Login Wizard - Panel 1

The table below describes the options and functions of the first panel of the SQL Server Login Wizard:

Option	Description
What is the name of the login?	Enter the login name.

Option	Description
Specify whether this login account will be for a SQL Server or a Windows NT User or Group.	<p>To make Performance Center verify the login with database authentication, click SQL Server, and then complete the password and confirm boxes.</p> <p>To make Performance Center verify the login with operating system authentication, click NT User or Group.</p> <p>Click the Domain list, and select a domain.</p>

Complete the information and click **Next** to advanced to the [SQL Server Login Wizard - Panel 2](#).

SQL Server Login Wizard - Panel 2

The table below describes the options and functions of the second panel of the SQL Server Login Wizard:

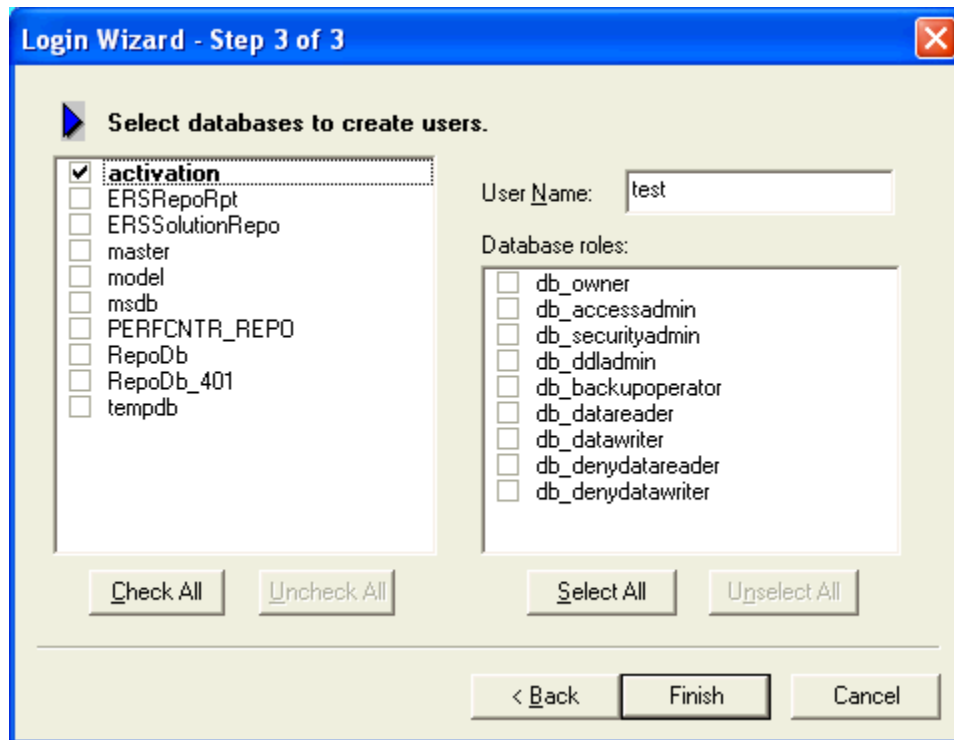


Option	Description
What should be the login's default database?	Select the default database. Avoid specifying the master database to prevent users from creating objects there inadvertently.
What is the login's default language?	Select the default language. Performance Center automatically defaults to the server's default language.

After you complete the required information, click **Next** to advance to the [SQL Server Login Wizard - Panel 3](#).

SQL Server Login Wizard - Panel 3

The table below describes the options and functions of the third panel of the SQL Server Login Wizard:



Option	Description
Select databases to create users	<p>Select the appropriate target database check boxes.</p> <p>User Name - If you are adding a user name that is different from the Login ID, type the new name in the User Name box.</p> <p>Database Roles - Select the check boxes corresponding to the target database roles.</p>

- 1 Make your selections and click **Finish**. The Execute SQL dialog opens.
- 2 You are returned to the [Performance Center Repository Installation Wizard](#).

Sybase

The Sybase database installation is a three-panel wizard that guides you through creating a Sybase repository for storing information used during monitoring. During the repository installation, you have the option to create a database, a new user, and/or a new segment.

Performance Center Repository Installation 3 of 4

On this panel select the Sybase server database where you want to store the Performance Center Repository. If you do not want to use an existing database, you can create a new one.

- 1 To create a new user account, see [Creating a Sybase Database](#).
- 2 Click **Next** and the [Performance Center Repository Installation 4 of 4](#) appears.

Performance Center Repository Installation 4 of 4

Set the object owner, table object placement, index object placement, as well as type and confirm the user login password.

- To create a new user account, see [Creating a New User Account](#).
 - If you are not creating a new user account, proceed to step 1.
- 1 Click the **Object Owner** list, and select the object owner.
 - To create new storage structures to use for the Performance Center Repository, see [Creating a Segment](#).
 - If you are not creating a new repository storage structure, proceed to step 2.
 - 2 Click the **Table object placement** list, and select the target repository storage structure.
 - 3 Click the **Index object placement** list, and select the target storage structure.
 - 4 In the **Password** box, enter the object owner password.
 - 5 In the **Confirm** box, re-enter the object owner password.
 - 6 Click **Install** to execute the SQL scripts on your server. The Installing Performance Center Repository dialog opens and executes a series of SQL scripts, which create the collection of tables, indexes, and code that Performance Center uses to store information used for monitoring. This process can take several minutes.
 - 7 When the installation finishes, on the **Performance Center Repository** dialog, click **Done**. The installation opens [InstallShield Wizard Complete](#).

For licensing information, see: [Licensing Performance Center](#)

Creating a Sybase Database

During the Performance Center installation you can select an existing Sybase database, or you can create a new one. The Installation can use this database as the repository. If you choose to create a new database, the Create Database Wizard appears to guide you through the process of creating a database without requiring you to know any of the underlying commands. To open the Create Database Wizard during the installation process, you must work from the first panel of the database install.

Opening the Database Wizard

- On the third panel of the **Repository Wizard**, click **New**, located next to the **Database** list.

Sybase Database Wizard - Panel 1

On the first panel of the Database Wizard you can name the database and set special database properties.

Completing Panel 1

- 1 In **What is the name of the database?** enter the name of the database.
- 2 To create the database for loading the database dump using the For Load option, click **Yes**. If you do not want to create the database for loading the database dump using the For Load option, click **No**.

NOTE: The For Load option speeds loading by eliminating the steps for pre-initializing panels.
- 3 To create the database using the with Override option, click **Yes**. If you do not want to create the database using the with Override option, click **No**.

- 4 Click **Next** and the [next panel](#) of the wizard appears.

Sybase Database Wizard - Panel 2

On the second panel of the Database Wizard you can specify how and where you want to place the physical storage of the database.

NOTE: We strongly recommend that you place the transaction log on a separate device from all other database fragments.

Completing Panel 2

Before you can complete the second panel of the wizard, you must add a database fragment. The Add Database Fragment dialog opens when you proceed from panel one to panel two of the Create Database Wizard.

- 1 To specify the placement of the database, in the **Data Device** box, click the **Device** list.
- 2 In the **Size** box, type the **MB** value of the data device.
- 3 **OPTIONAL:** In the **Log Device** box, click the list to specify the placement of the transaction log.
- 4 If you specify a log device, in the **Size** box, type the **MB** value of the log device.
- 5 Click **Add**. The database fragment is added and the Add Database File dialog closes.
 - To add more database fragments, click **Add**.
 - To edit an existing database fragment, click the fragment and then click **Edit**.
 - To delete an existing database fragment, click the fragment and then click **Delete**.
- 6 When you finish adding database fragments, click **Next**. The [next panel](#) of the wizard appears.

Sybase Database Wizard - Panel 3

You can set database options in the third panel of the Database Wizard.

Completing Panel 3

- 1 In **Which database options do you wish to activate**, select the appropriate check boxes or click **Check All**.
- 2 When you finish specifying database options, click **Finish**. The Preview: Create dialog appears.
- 3 To create the database, click **Execute**. A new database is created and then returns you to the [Performance Center Repository Installation Wizard](#).

Creating a Sybase User

During the Performance Center installation you can select an existing Sybase user account, or you can create a new user account. The Installation can use this account to hold the repository objects and another to perform the actual monitoring of the database Performance Center Repository. If you choose to create a new user account, the Create User Wizard guides you through the process of creating a user without requiring you to know any of the underlying commands. To open the Create User Wizard during the installation process, you must work from the second panel of the database install.

Opening the User Wizard

- On the fourth panel of the **Repository Wizard**, click **New**, located next to the **Object Owner** list.

Sybase User Wizard - Panel 1

On the first panel of the User Wizard you can:

- Select the login ID.
 - Set a user name.
 - Select a user group.
- 1 From the **What is the login ID for the new user?** list, click the target login name.
If there is no login ID in the list, or if you want to create a new login ID, click **<New>**.
For Creating a New Login ID the [Login Wizard](#) appears.
For an Existing Login proceed to step 2.
 - 2 In **What is the name of the user**, enter a user name.
 - 3 Click the **To which group will the user belong** list, and select the target group.
 - 4 Click **Finish** and you are returned to the Performance Center Repository Installation Wizard.

For licensing information, see: [Licensing Performance Center](#)

Sybase Login ID

During the Performance Center installation you can create a new Sybase login ID. This login ID is used for the Sybase user. If you do not have a valid login ID, or if you choose to create a new login ID, the Login Wizard guides you through the process of creating a login ID without requiring you to know any of the underlying commands. To open the [Login Wizard](#) during the installation process, you must work from the first panel of the [Create User Wizard](#), which is on the last panel of the [SQL Server Repository install](#).

In the Sybase Login Wizard you can create a login and specify security options.

On the Sybase Login Wizard you can:

- Name the login ID.
- Define a login password.
- Specify a default database and language for the login.
- Grant roles to the login.
- Lock the login upon creation.
- Select databases to create users.
- Select user types, user names, and user groups.
- Select aliases.

For more information, see [Sybase Login Wizard - Panel 1](#).

Sybase Login Wizard - Panel 1

The following table describes the options and functions of the first panel of the Sybase Login Wizard:

Option	Description
What is the ID for the Login?	Enter the login name. Can be up to 30 characters long.

Option	Description
What is the password for the new login?	Enter the password for the new login. Must be between six and 30 characters.

For more information, see [Sybase Login Wizard - Panel 2](#).

Sybase Login Wizard - Panel 2

The following table describes the options and functions of the second panel of the Sybase Login Wizard:

Option	Description
OPTIONAL: What is the full name of the login box?	Enter the full name for the login.
What should be the login's default database?	Database - Select the default database.
What is the login's default language?	Language - Select the default language. If you do not select one, Performance Center uses the server's default language.

NOTE: You should avoid specifying the master database to prevent users from creating objects there inadvertently.

For more information, see [Sybase Login Wizard - Panel 3](#).

Sybase Login Wizard - Panel 3

The following table describes the options and functions of the third panel of the Sybase Login Wizard:

Option	Description
OPTIONAL: Select any roles that you wish to grant to the login from the list below	Select the check boxes that correspond to the roles you want to grant.
Do you want to lock the new login after creating it?	Lock the new login after Performance Center creates it. Locking the login prevents immediate access.

For more information, see [Sybase Login Wizard - Panel 4](#).

Sybase Login Wizard - Panel 4

The following table describes the options and functions of the fourth panel of the Sybase Login Wizard:

Option	Description
Select databases to create users	<p>Select the check boxes corresponding to the databases.</p> <p>User Type - Select the user type to add.</p> <p>If you select dbo and you want to transfer aliases and permissions, click Transfer Aliases and Permissions.</p> <p>If you select User, in the User box, click the User Name list, and select the target user name, click the Group list, and select the target user group.</p> <p>If you select Alias, in the Alias box, click the User Name list, and select the target user name.</p>

NOTE: The options available on this panel depend on the version of Sybase running on the datasource.

Creating a Segment

During the Performance Center installation you must select an existing storage area to use for the repository storage, or create a new storage structure. Performance Center uses the repository storage to store information used for monitoring. If you choose to create a new repository storage, the Create Segment Wizard guides you through the process of creating a repository storage structure without requiring you to know any of the underlying commands.

Opening the Segment Wizard

- On the fourth panel of the **Repository Wizard**, click **New**, located next to the **Table object placement (Segments)** list.

Sybase Segment Wizard - Panel 1

On the first panel of the Segment Wizard name the segment.

- In **What is the name of the segment?** enter the name of the segment.
- Click **Next**. The [next panel](#) of the wizard appears.

Sybase Segment Wizard - Panel 2

On the second panel of the Segment Wizard place the segment on one or more database fragments.

- In the **On which database device do you wish to place the segment?** grid, click the database (device) fragments on which you want to place the segment, or Select All.
- Click **Finish** and you are returned to the [Performance Center Repository Installation Wizard](#).

Upgrading an Existing Oracle or Sybase Repository

If you selected [Performance Center Repository - Use Existing Repository](#), you can upgrade your existing Oracle or Sybase repository server.

NOTE: If the installation detects an existing DB2, Oracle, SQL Server, or Sybase repository server on the machine where you are installing Performance Center, it returns the user name and server name and gives you the option to upgrade this server or to create a new server.

NOTE: If the installation does not detect an existing DB2, Oracle, SQL Server, or Sybase repository server on the machine where you are installing Performance Center, you still have the option to create a new server or upgrade an existing server. If you choose to upgrade an existing server, you must enter the information manually.

For a detected existing repository: If the installation detects an existing DB2, Oracle, SQL Server, or Sybase repository, it returns a RegisterDS message.

- To continue with the repository upgrade, click **Yes**. After upgrading your DB2, Oracle, SQL Server, or Sybase repository.

For an undetected existing repository: If the Installation does not detect an existing DB2, Oracle, SQL Server, or Sybase repository, the [Performance Center Repository Wizard](#) appears.

Performance Center Repository Wizard 2 of 2

On this panel you can:

- Select the server where the repository resides.
 - Select the owner login and password authentication.
 - For Database Authentication, supply the repository login and password.
- 1 Click the **Please select the server where the current repository is located** list, and select the target server.
 - 2 Click the option that corresponds to the target login authentication:
 - OS
 - Database
 - 3 If you select **Database Authentication**, enter the login name and password in the corresponding boxes.

NOTE: For all supported Oracle platforms, if you select **Use Database Authentication**, you must use the Sys login to create the repository.
 - 4 Click **OK** and the Verifying Performance Center Repository dialog appears.
 - 5 Click **Close** and a RegisterDS message is returned.
 - 6 To continue with the repository upgrade, click **Yes**. After upgrading your Oracle repository, the installation opens the [InstallShield Wizard Complete](#) panel.

For licensing information, see: [Licensing Performance Center](#)

InstallShield Wizard Complete

On this panel you will complete the Performance Center Installation.

- 1 To restart your computer later, click **No, I will restart my computer later**.

NOTE: The default selection is **Yes, I want to restart my computer now**.

- 2 Click **Finish**.

For information on Licensing, see: [Licensing Performance Center](#)

CAUTION: If you opt to restart your computer later, you must restart your computer before you can use Performance Center.

If you leave the Yes option selected, the Installation restarts your computer. When you restart your computer, Performance Center runs a validate routine and then returns a message indicating if there are any errors. To view the Result Log after the validate routine runs, click **Yes**.

Uninstalling Performance Center

Performance Center includes an uninstall utility that removes the application from your machine. You can also remove your server, repository, or client from your machine without requiring you to uninstall the entire application.

If you are Uninstalling the Performance Center Server, you have the option to leave the repository or remove it. Unless you are moving your repository to another supported platform, we recommend that you leave the repository and use the installation utility to upgrade it.

CAUTION: If you remove your server, repository, or client, before using Performance Center, you must run the installation process again to reinstall this particular component.

Uninstalling Your Server, Client, and/or Repository

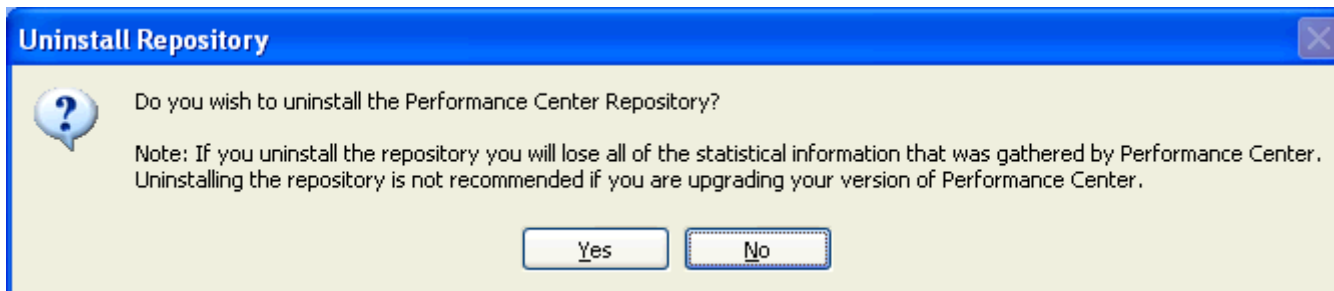
- 1 Click **Start > Programs > Performance Center 2.6.0 > Uninstall Performance Center**. The InstallShield Wizard guides you through the uninstall process.

NOTE: Before uninstalling Performance Center and all of its components, you are prompted to confirm that you want to delete the application.

- 2 To remove Performance Center, click **Yes**.

NOTE: You may get a warning dialog asking you to close certain applications before continuing the uninstall. Close the listed applications and click **Retry**.

If you are uninstalling the Performance Center Server, the Uninstall Repository message appears.



- 1 Click **Yes** to uninstall the Repository or **No** to leave the Repository intact.

NOTE: We recommend that you do not uninstall the repository if you are upgrading Performance Center.

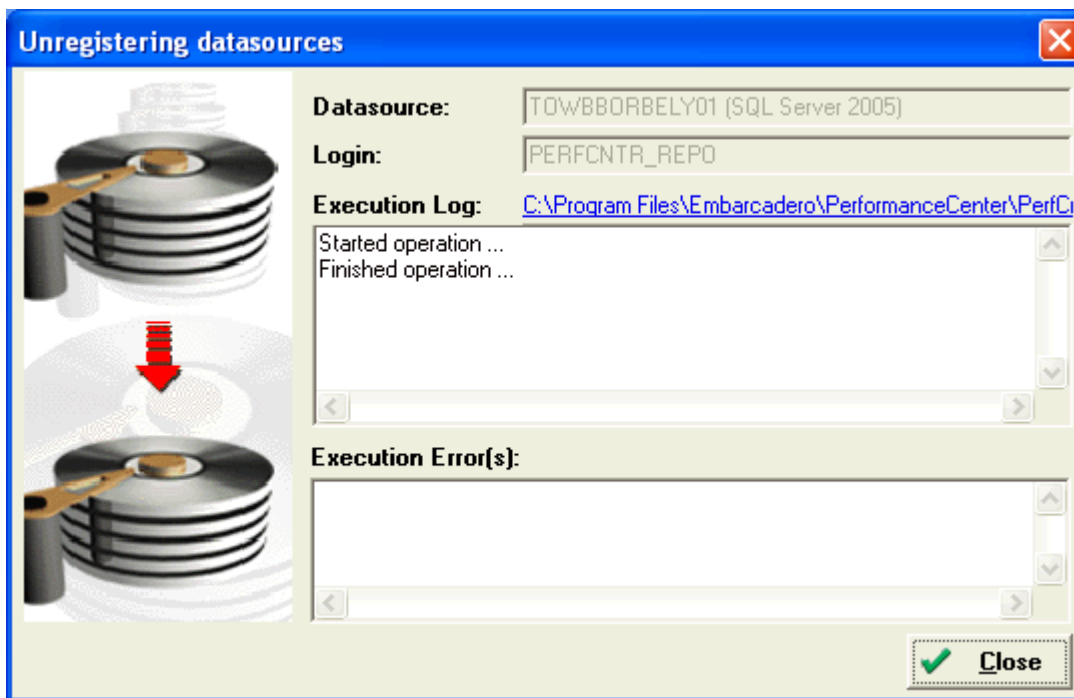
Uninstalling Performance Center

- 1 If you want to uninstall only the Performance Center application, click **No**. A configuring dialog with a progress bar opens.
- 2 Once the Uninstall is complete, the application is removed from the start menu and, if installed, the desktop icon is removed.

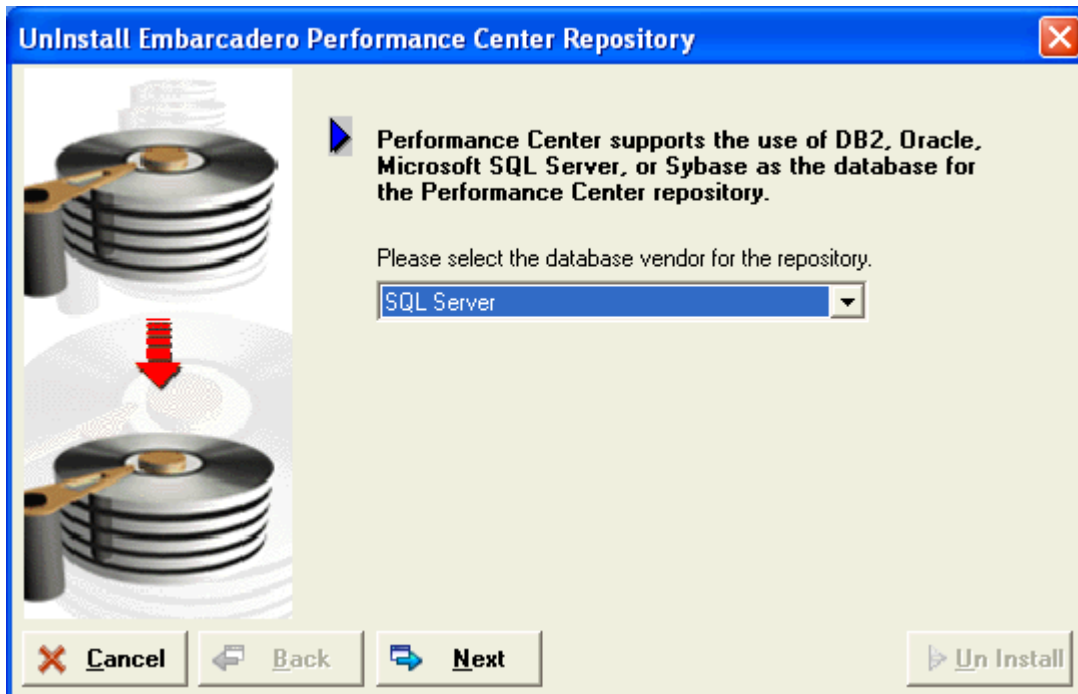
Uninstalling the Repository

If you choose to uninstall the Repository, the Wizard prompts you to unregister any registered database(s) from the Performance Center Repository.

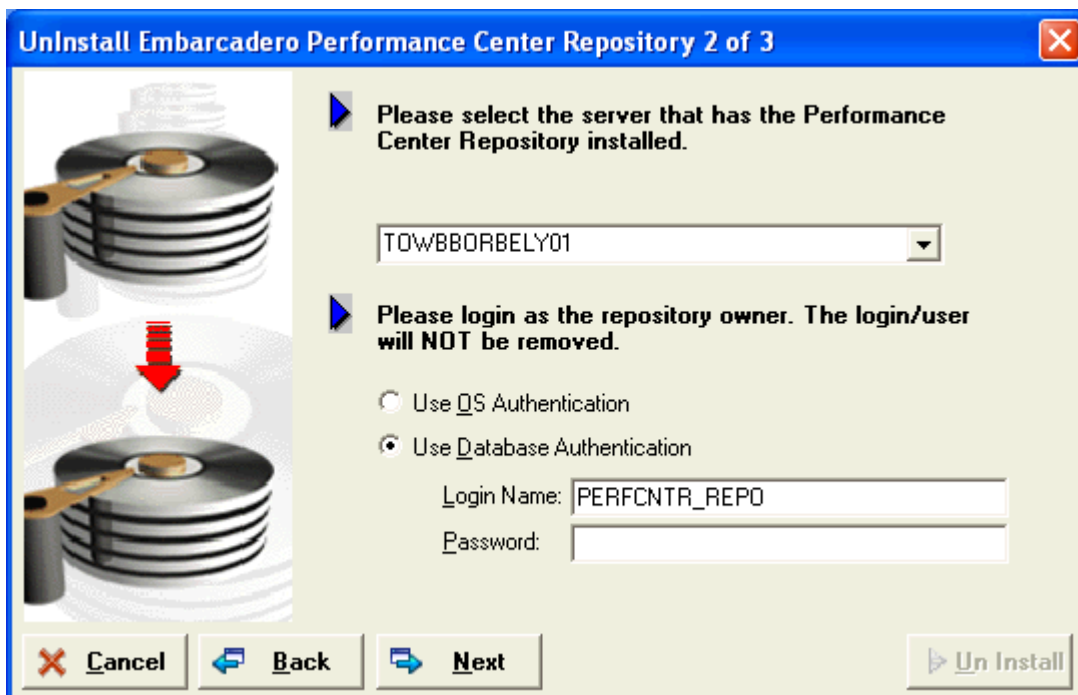
- 1 Click **Yes** and a dialog appears showing the execution log and execution error(s).



- 2 Once the datasources have been unregistered, click **Close**.

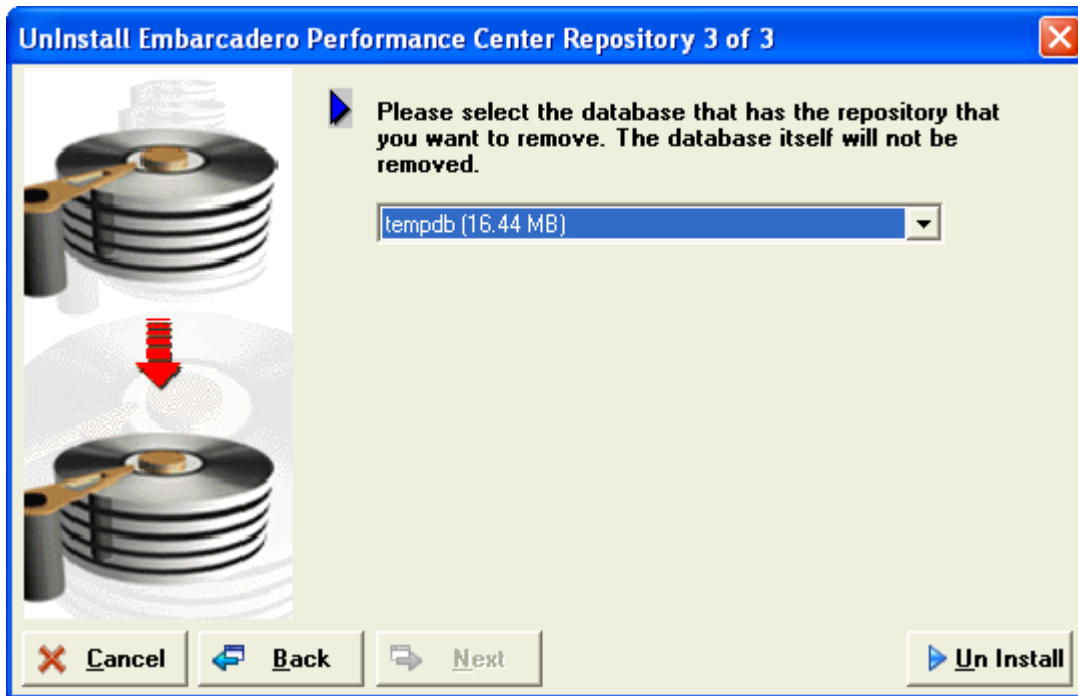


- 3 Select the repository you want uninstalled from the drop down list and click **Next**.



- 4 Select the server where the repository is installed and login as the repository owner.

- Click **Next** to advance to the third and final panel.



- Select the database that has the repository you want to remove from the drop down list.
- Then click **UnInstall** and the repository is removed. You will be asked to confirm the action.

NOTE: Note that the database itself is not removed, just the repository.

The uninstall process may take several minutes. When the InstallShield Wizard completes the process, it opens the Installation Complete dialog box.

- Click **Finish**. You must restart your computer to complete the uninstallation.

Licensing Performance Center

Performance Center requires a valid license in order to run. Three kinds of licenses are available: Trial, Workstation, and Networked.

Trial licenses: A license for a 14-day, full-featured trial version of the product. The trial license must be registered before you can use the product.

Workstation licenses: A license or set of licenses is tied to a particular workstation. The product can only be used on that workstation.

Networked licenses: Networked licenses are administered and distributed by a central License Server (License Center or Acresto FLEXnet Publisher). There are two types of networked licenses: *Concurrent* and *Networked Named User*. With Concurrent licensing, users on different machines take turns using licenses from a shared pool. With Networked Named User licensing, licenses are pre-assigned to specific users setup on the license server's user list. Those users are guaranteed to have licenses available any time.

Registering a Trial or Workstation License at Application Startup

Shortly after downloading a trial version of an Embarcadero product, you should receive an email with a serial number, which you must register as follows. These instructions also apply if you have purchased a product and received a serial number prior to running the application for the first time, or if the trial period has expired.

- 1 Start the application. An **Embarcadero License Registration** dialog appears.

NOTE: The Embarcadero Product Registration dialog automatically appears during the install process.

- 2 Copy the serial number from the email and paste it in the **Serial Number** field.
- 3 Enter your Embarcadero Developer Network account credentials in the **Login or Email** and **Password** fields. If you have not previously created an EDN account, or have forgotten your password, click **I need to create...** or **I've lost my password**.
- 4 Click **Register**. At this point you are returned to the Install wizard and the

Your activation file should be downloaded and installed automatically. If this does not happen, click the **Trouble Connecting? Try Web Registration** link and follow the prompts. If you still have problems, see [Registering by Phone](#).

Registering a Workstation License after Application Startup

The following instructions assume that you have received a workstation license by email and that you currently have a valid trial license. If you did not install a trial version or the trial period has expired, follow the instructions in [Registering a Trial or Workstation License at Application Startup](#) instead.

- 1 Select **Help > Embarcadero Licensing > Show License Information**.
- 2 In **Embarcadero Product License Manager**, select the version of EA/Studio the license applies to (CE or BME).
- 3 Click **Add Serial Number** in the upper right corner of the **Embarcadero Product License Manager**.
- 4 Copy the serial number from the email and paste it in the **Add Serial Number** dialog, then click **OK**.
- 5 If prompted to restart the application, click **Yes**., then after the application restarts select **Help > Embarcadero Licensing > Show License Information**.
- 6 Expand **Unregistered**, right-click the serial number you just added, and select **Register**. A registration dialog opens.
- 7 Ensure that the **Register using Online Registration** radio box is selected.
- 8 Provide Developer Network credentials in the **Login name or Email** and **Password** boxes. If you have not previously created an EDN account, or have forgotten your password, click **I need to create...** or **I've lost my password**.
- 9 Click **Register**.
- 10 If prompted to restart the application, click **Yes**.

Your activation file should be downloaded and installed automatically. If this does not happen, click the **Trouble Connecting? Try Web Registration** link and follow the prompts. If you still have problems, see [Registering by Phone](#).

Registering by Phone

If you have problems with either of the above procedures, you can register licenses by phone. You will have to provide Developer Network credentials; the registration code displayed in the Embarcadero License Registration dialog that appears when you start an unlicensed application; the product base license serial number; and the license serial numbers for any additional features you have purchased.

For North America, Latin America and Asia Pacific, call (415) 834-3131 option 2 and then follow the prompts. The hours are Monday through Friday, 6:00 A.M. to 6:00 P.M. Pacific time.

For Europe, Africa and the Middle East, call +44 (0)1628-684 494. The hours are Monday to Friday, 9 A.M. to 5:30 P.M. U.K. time

Shortly after phoning in, you will receive an email containing an activation file. Then do the following:

- 1 Save the file to the desktop or a scratch directory such as c:\temp.
- 2 Select **Help > Embarcadero Licensing > Show License Information**.
- 3 Click **Import License** in the upper right corner of the **Embarcadero Product License Manager**.
- 4 Click **Browse**, navigate to the directory where you saved the activation file, and double-click it, and click **OK**.
- 5 If prompted to restart the application, click **Yes**.

Registering a Networked License

If you work in an organization using Networked licensing, an administrator, department head, or someone providing a similar function will provide you with an activation file.

Once you receive the file, save it to the `license` subfolder of your product's main installation folder (typically `C:\Program Files\Embarcadero\<product><version>\license\`), then restart the application.

No additional steps are necessary.

Index

A

Apache httpd Server 9

D

Database Wizard

SQL Server 42

Sybase 53

I

IIS 9

O

Oracle Interoperability Matrix 7

R

Repository

Default Installation 21

S

SQL Server Database Wizard

Panel 1 42

Panel 2 44

Panel 3 45

Panel 4 46

SQL Server Login Wizard

Panel 1 50

Panel 2 51

Panel 3 51

Sybase Database Wizard

Panel 1 53

Panel 2 54

Panel 3 54

Sybase Login Wizard

Panel 1 55

Panel 2 56

Panel 3 56

Panel 4 57

T

Tablespace Wizard 33

W

Web Server 9