



Product Documentation

---

# ER/Studio® Data Architect

New Features Guide

Version 9.7/XE5

Published February 12, 2014

---

© 2014 Embarcadero Technologies, Inc. Embarcadero, the Embarcadero Technologies logos, and all other Embarcadero Technologies product or service names are trademarks or registered trademarks of Embarcadero Technologies, Inc. All other trademarks are property of their respective owners.

Embarcadero Technologies, Inc. is a leading provider of award-winning tools for application developers and database professionals so they can design systems right, build them faster and run them better, regardless of their platform or programming language. Ninety of the Fortune 100 and an active community of more than three million users worldwide rely on Embarcadero products to increase productivity, reduce costs, simplify change management and compliance and accelerate innovation. The company's flagship tools include: Embarcadero® Change Manager™, CodeGear™ RAD Studio, DBArtisan®, Delphi®, ER/Studio®, JBuilder® and Rapid SQL®. Founded in 1993, Embarcadero is headquartered in San Francisco, with offices located around the world. Embarcadero is online at [www.embarcadero.com](http://www.embarcadero.com).

February 12, 2014

# Contents

- New Features ..... 4
  - Release 9.7 features summary: ..... 4
    - Teradata - Multi-Level Partitioned Primary Indexes (MLPPI) ..... 4
    - Teradata - Temporal data types ..... 4
    - Teradata - Alter Table. .... 5
    - Compatibility - Oracle 12c..... 5
    - Compatibility - SQL Server 2014..... 5
    - Enhancement - Pop-up Attribute/Column Editor..... 6
    - Enhancement- Save Repository. .... 6

# NEW FEATURES

This new features guide covers the new features for both ER/Studio Data Architect version 9.7.

## RELEASE 9.7 FEATURES SUMMARY:

In addition to many bug fixes, 9.7 offers the following new features.

- First-class Teradata Support
  - Multi-level Partitioned Primary Indexes
  - Alter Table
  - Temporal Datatypes
    - Interval
    - Period
- Oracle - Add Tolerance for Oracle 12c
- SQL Server - Add Tolerance for SQL Server 2014
- Popout Attribute/Column Editor
- Save Repository Server Name

## TERADATA - MULTI-LEVEL PARTITIONED PRIMARY INDEXES (MLPPI)

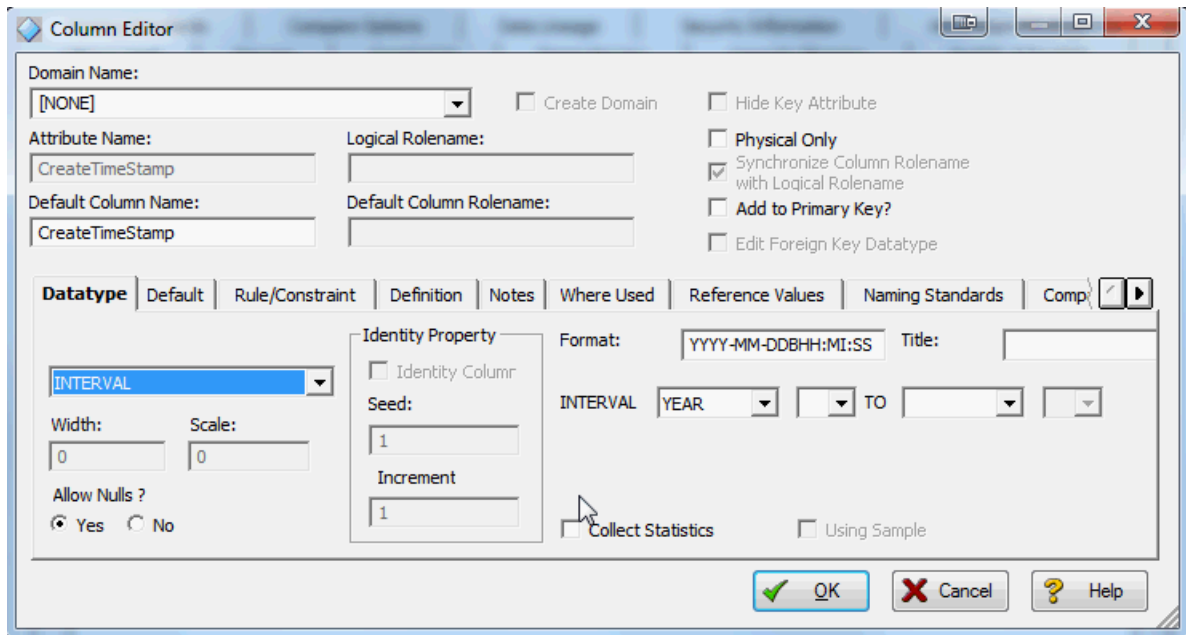
ER Studio Data Architect XE5 adds full support including forward and reverse engineering for multi-level partitioned primary indexes (MLPPIs), which can significantly improve the performance of certain queries and high-volume insert, update and delete operations.

## TERADATA - TEMPORAL DATA TYPES

ER Studio Data Architect XE5 now supports:

**Period** - Full support for period datatypes including design, forward and reverse engineering.

**Interval Parameters** - Full support for precision of INTERVAL datatypes, including design, forward and reverse engineering.



**TERADATA - ALTER TABLE.**

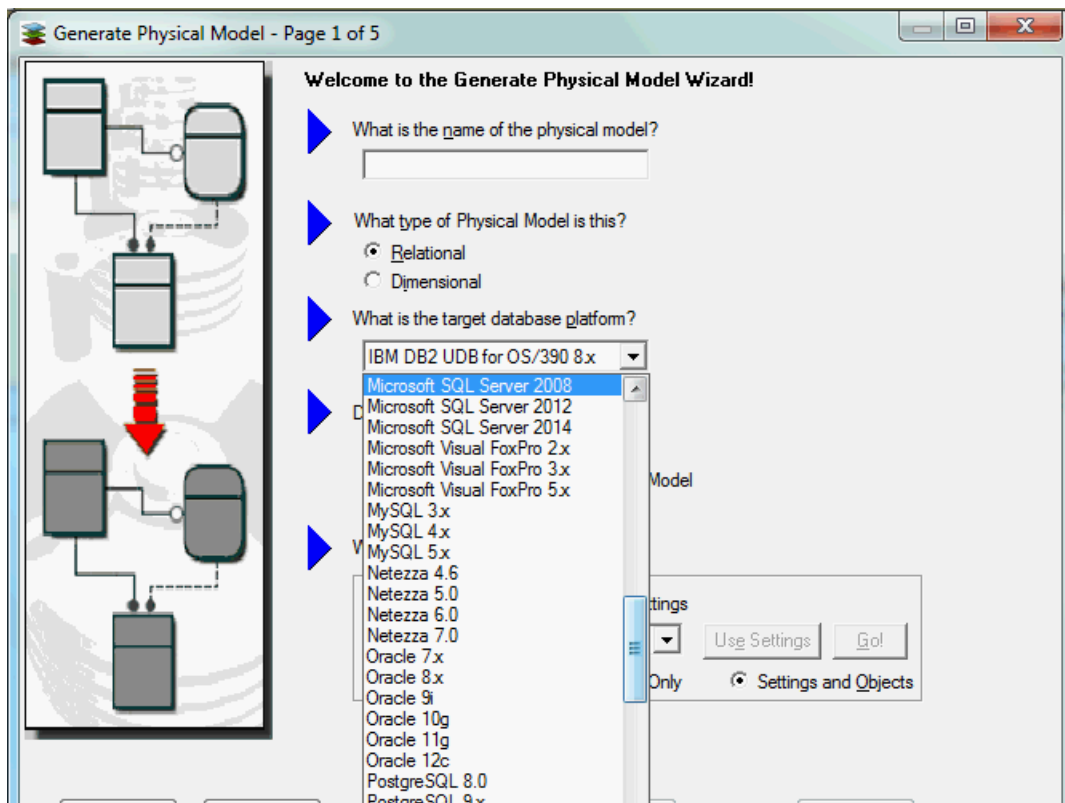
ER Studio Data Architect XE5 introduces the ability to generate Alter scripts for Teradata databases, both standard and extended, with round-trip database support.

**COMPATIBILITY - ORACLE 12C.**

ER Studio Data Architect XE5 now supports Oracle 12c across the product.

**COMPATIBILITY - SQL SERVER 2014.**

ER Studio Data Architect XE5 now supports SQL Server 2014 across the product.



## ENHANCEMENT - POP-UP ATTRIBUTE/COLUMN EDITOR.

A new pop-up attribute/column editor now improves the ability to edit definitions and notes.

## ENHANCEMENT- SAVE REPOSITORY.

It is now possible to save the Repository Server name and view Repositories that are available on the local network.