



Product Documentation

Embarcadero® Rapid SQL™

New Features Guide

Version 2016

1st Edition Sept., 2015

© 2015 Embarcadero Technologies, Inc. Embarcadero, the Embarcadero Technologies logos, and all other Embarcadero Technologies product or service names are trademarks or registered trademarks of Embarcadero Technologies, Inc. All other trademarks are property of their respective owners.

Embarcadero Technologies, Inc. is a leading provider of award-winning tools for application developers and database professionals so they can design systems right, build them faster and run them better, regardless of their platform or programming language. Ninety of the Fortune 100 and an active community of more than three million users worldwide rely on Embarcadero products to increase productivity, reduce costs, simplify change management and compliance, and accelerate innovation. The company's flagship tools include: Embarcadero® Change Manager™, Embarcadero® RAD Studio, DBArtisan®, Delphi®, ER/Studio®, JBuilder®, and Rapid SQL®. Founded in 1993, Embarcadero is headquartered in San Francisco, with offices located around the world. Embarcadero is online at www.embarcadero.com.

September, 2015

CONTENTS

What's New in Rapid SQL 2016.....	4
PostgreSQL Object Management.....	4
Object Wizards/Editors	4
Missing Indexes	4
ISQL Performance.....	4
Performance window	5
ISQL Performance listed in Error Pane.....	5
Team Server 2016 Support	5
Team Server 2016 as the Data Source Catalog.....	6
Topics	7

What's New in Rapid SQL 2016

- [PostgreSQL Object Management](#)
- [Missing Indexes](#)
- [ISQL Performance](#)
- [Team Server 2016 Support](#)

PostgreSQL Object Management

Object Wizards/Editors

A Wizard and an Editor for **Types** have been added for PostgreSQL: [Types Wizard](#) and [Types Editor](#).

Missing Indexes

The [Missing Indexes](#) feature analyze the system looking for **Missing Indexes** which, once added, would improve the performance.

Rapid SQL proposes you some **Indexes** that can be created created after analyzing the system. You can create these **Indexes** by launching the [Indexes Wizard \(SQL Server\)](#) and directly double-clicking the selected **Missing Index**.

Description about how to use and access **Missing Indexes** is in [Missing Indexes \(SQL Server\)](#).

Note: [Missing Indexes](#) is only available for SQL Server.

ISQL Performance

SQL Editor includes new functionalities for SQL Server. In this new release, SQL editor provides information about the SQL statements while you are writing in the [SQL Editor](#). This information is included in a new window as well as listed in the [Error Pane](#). Information like **Missing Indexes**, **Statistics**, **Overlapping Statistics** and **Recommendations** are displayed in this new window. You can find more information in [ISQL Performance](#)

Performance window

The screenshot shows the Performance window with the 'Missing Indexes' tab selected. It displays information for a table named [dbo].[testmissingindexes2].

Missing Indexes for table: [dbo].[testmissingindexes2]

The missing index DMV detected recent queries that used the table [dbo].[testmissingindexes2] that could have benefited from an index that didn't already exist.

The information below shows the new index candidates. You can use this information to help determine if there are any possible performance gains from adding a new index.

NOTE: the DMVs are reset when SQL Server is restarted, so you need to make sure you collected data for a long enough period of time to get good results from they query.

Property	Value
Total Cost	1549
avg_user_impact	63.13
Recommendation	CREATE INDEX [missing_index_103_102_testmissingindexes2] ON [SILK_TEST].[dbo].[testmissingindexes2] ([Codigo2], [Codigo3]) INCLUDE ([Field1], [Field2], [Field3], [Field4])
Total Cost	1549
avg_user_impact	63.13
Recommendation	CREATE INDEX [missing_index_105_104_testmissingindexes2] ON [SILK_TEST].[dbo].[testmissingindexes2] ([Codigo2], [Codigo4]) INCLUDE ([Field1], [Field2], [Field3], [Field4])

ISQL Performance listed in Error Pane

The screenshot shows the Error Pane with the 'Performance' tab selected. It displays four error messages related to ISQL Performance.

```

1 SELECT * from SILK_TEST.dbo.TestMissingIndexes1
2 SELECT * from trunit.BULK_INSERT_TES
3 SELECT * from trunit.MULTIPLE_RESULT_TWO
4 SELECT * FROM trunitdb.trunit.BASIC_DATA
5 SELECTx * from SILK_TEST.dbo.test2
    
```

Transaction Count: 0 \DSLABS03\trunitdb\sa Line 5 Col 8 00:00.495 1 Row(s)

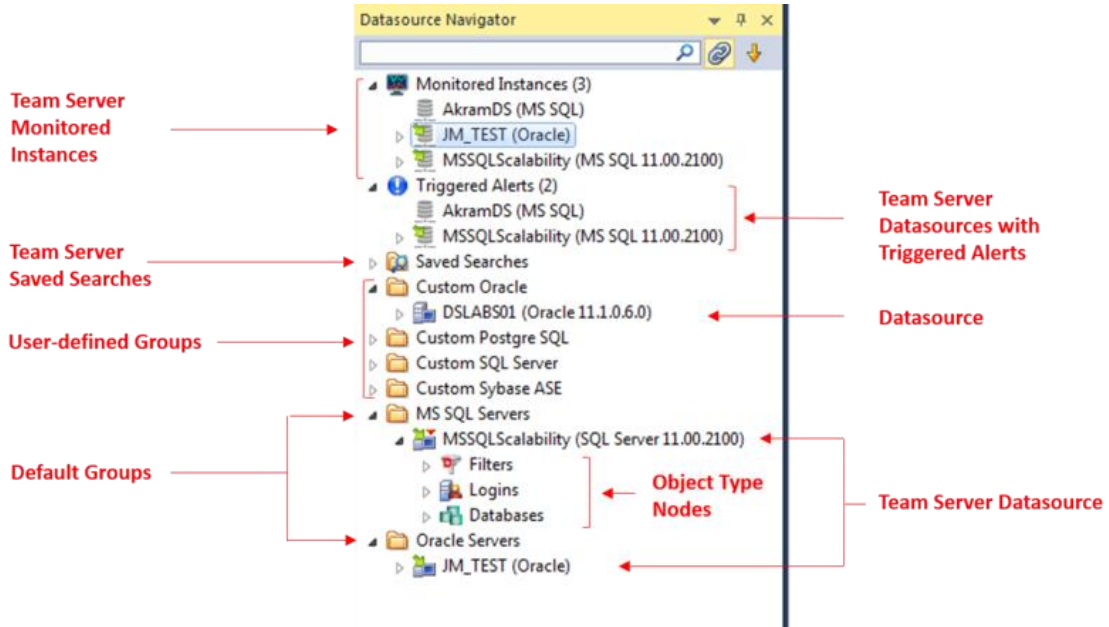
Level	Line	Column	Message
Performance	1	15	Performance information available for table: SILK_TEST.dbo.TestMissingIndexes1.
Semantic	2	15	Table BULK_INSERT_TES cannot be resolved or may be hidden by a SQL filter
Performance	4	15	Performance information available for table: trunitdb.trunit.BASIC_DATA.
Syntax	5	1	Encountered unexpected token "SELECTx"

Note: [ISQL Performance](#) only available for SQL Server.

Team Server 2016 Support

Integration of Team Server 2016 in Rapid SQL has been improved. The old **TeamServer Navigator** has been fully integrated into the **Datasource Navigator** as well as all the features only accessible from the TeamServer Navigator. For more information, see [Using the Datasource Navigator](#) and [Basic Viewing Options in the Navigator](#). Notice that when logged in Team Server 2016 using [Performance IQ](#), three new nodes are added:

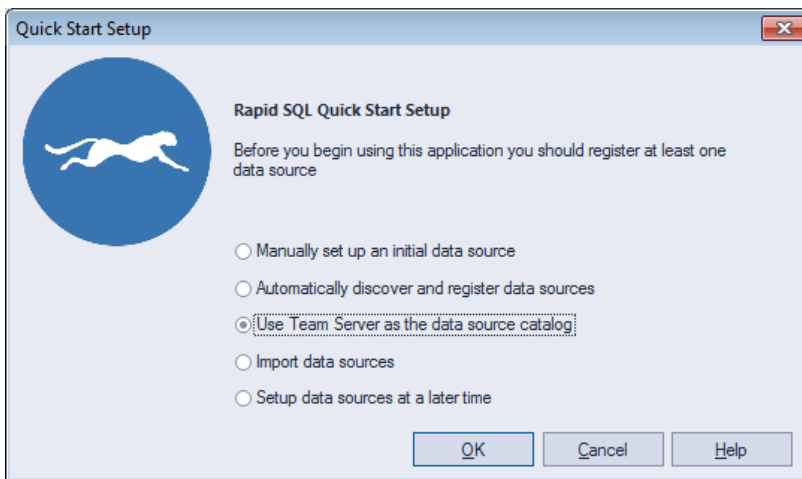
- Monitored Instances
- Triggered Alerts
- Saved Searches



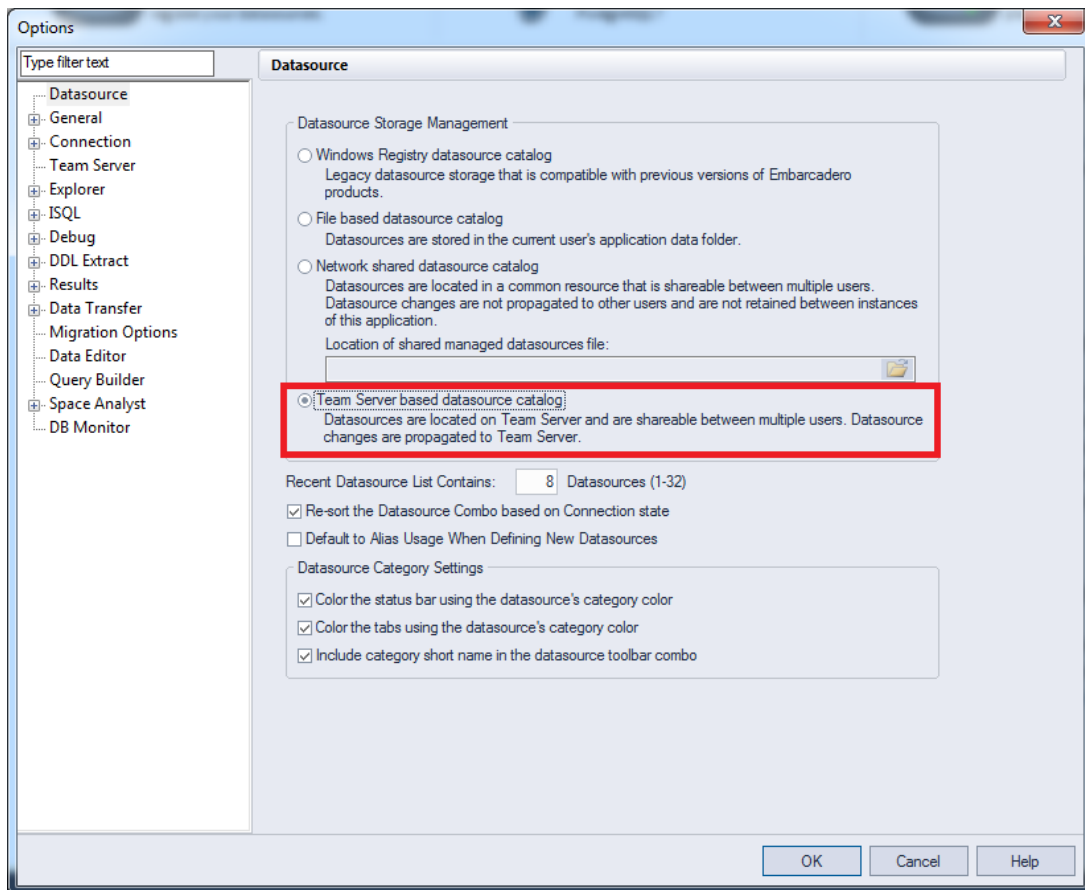
Team Server 2016 as the Data Source Catalog

Rapid SQL 2016 adds the option of registering datasources from the Team Server 2016 Repository. To allow that, new options have been added to [Quick Start Setup](#), and in [Tools > Options > Datasources](#).

In [Quick Start Setup](#), the import of datasources using Team Server 2016 as a catalog has been added.



In [Tools > Options > Datasources](#) the possibility of selecting Team Server 2016 as the source of the catalog has also been added. For more information, see [Working with Team Server 2016 as Datasource Catalog](#).



Topics

- [Release Notes for Rapid SQL 2016](#)
- [What Was New in Past Releases](#)