



# **ER/Studio Enterprise Portal 1.0.3 Installation Guide**

Copyright © 1994-2009 Embarcadero Technologies, Inc.

Embarcadero Technologies, Inc.  
100 California Street, 12th Floor  
San Francisco, CA 94111 U.S.A.  
All rights reserved.

All brands and product names are trademarks or registered trademarks of their respective owners.  
This software/documentation contains proprietary information of Embarcadero Technologies, Inc.; it is provided under a license agreement containing restrictions on use and disclosure and is also protected by copyright law. Reverse engineering of the software is prohibited.

If this software/documentation is delivered to a U.S. Government Agency of the Department of Defense, then it is delivered with Restricted Rights and the following legend is applicable:

Restricted Rights Legend Use, duplication, or disclosure by the Government is subject to restrictions as set forth in subparagraph (c)(1)(ii) of DFARS 252.227-7013, Rights in Technical Data and Computer Software (October 1988).

If this software/documentation is delivered to a U.S. Government Agency not within the Department of Defense, then it is delivered with Restricted Rights, as defined in FAR 552.227-14, Rights in Data-General, including Alternate III (June 1987).

Information in this document is subject to change without notice. Revisions may be issued to advise of such changes and additions. Embarcadero Technologies, Inc. does not warrant that this documentation is error-free.

# Contents

- Installing the ER/Studio Enterprise Portal ..... 4
  - Technical Requirements ..... 4
  - Installing the Enterprise Portal ..... 5
- Upgrading ER/Studio Portal ..... 11
- Licensing ER/Studio Enterprise Portal ..... 12
  - Managing Licenses ..... 12
  - Registering Purchased Licenses ..... 13
  - Requesting an Evaluation License ..... 14
  - Recommended Next Steps ..... 15
- Uninstalling the ER/Studio Enterprise Portal ..... 15

# Installing the ER/Studio Enterprise Portal

This section covers the installation requirements for the Embarcadero's ER/Studio Enterprise Portal. Before installing the Enterprise Portal ensure your system meets the application's minimum technical requirements.

## Technical Requirements

The Enterprise Portal is a 32-bit application that runs in a Microsoft Windows environment. Before installing the Enterprise Portal, verify that your environment meets the hardware and operating system requirements.

## Hardware Requirements

The minimum recommended hardware requirements:

Hardware	Minimum Requirement
CPU	Pentium Class 4-CPU or higher
RAM	3 GB minimum
Disk Space	Hard Drive space - 300 MB minimum for installation

## Supported Database Platforms

The Reporting Repository is the database the portal uses to store the information it gathers from the ER/Studio Repository. The Solution Repository is the location where the reports from previous queries and the metadata they rely on is stored and maintained.

The supported database platforms for the Reporting and Solution databases are listed below:

- Oracle 9i and 10g
- IBM DB2 UDB 8.x and 9.x Server

**NOTE:** Before installing the portal on the DB2 platform, you must first create the reporting and solution databases. Allocate at least 16k for the size of the **page, user tablespace, and system temp tablespace**.

- Microsoft SQL Server 2000 & 2005

## Operating System Requirements

The Enterprise Portal supports the following operating system requirements:

- Microsoft Windows 2003 Server (32-bit only)

**NOTE:** It is recommended that the reporting and solution databases be put on a separate machine from the one running the ER/Studio Repository database. The ideal setup would be if the portal application server is put on the same machine as the ER/Studio Repository server, as long as it has enough RAM.

- An available TCP/IP port. The default is 80. However, if it is already in use by another application, use an unused port between 0 and 65535. For more details, see the [Installation Wizard - Host and Port](#) topic.

### Client System Requirements

- Mozilla Firefox 2.0 (or later), Microsoft Internet Explorer 6.0 (or later), Netscape 7.2 (or later), and Safari 1.0.

## Installing the Enterprise Portal

The Enterprise Portal wizard-based installer guides you quickly through the installation process. This section describes installation prerequisites and the Installation Wizard. It also covers some basic decisions you must make during installation.

You must have administrative privileges to run the install. To complete the installation, you need to complete each panel of the Installation Wizard.

The Installation Wizard is a multi-panel wizard whose primary function is to install the Enterprise Portal, along with other third-party software that it is dependent upon, such as Pentaho BI Platform and Apache Tomcat.

In this installation you are setting up access to the ER/Studio Repository, and the Reporting and Solution Repositories.

### Installation Wizard - Welcome

To start the installation process:

- 1 Download the zip file from the web page to your local hard drive.
- 2 Unzip the installation file.

**NOTE:** The ER/Studio Enterprise Repository server and the database servers to be used for the reporting and solution repositories must be running before installing the Enterprise Portal.

- 3 Double-click **setupwin32.exe** and the InstallShield Wizard dialog is displayed. Click **Next** to open the Software License and Support Agreement panel.

**NOTE:** There may be a slight delay between when you double-click the file and when the InstallShield wizard opens.

The Welcome panel of the Installation Wizard offers introductory information.

**NOTE:** You cannot install the portal on a system where you have installed ER/Studio or where you have previously installed the portal. If the portal installer detects an installation of ER/Studio Enterprise Portal or ER/Studio, you must exit the wizard and uninstall these applications before proceeding.

### Installation Wizard - Software License and Support Agreement

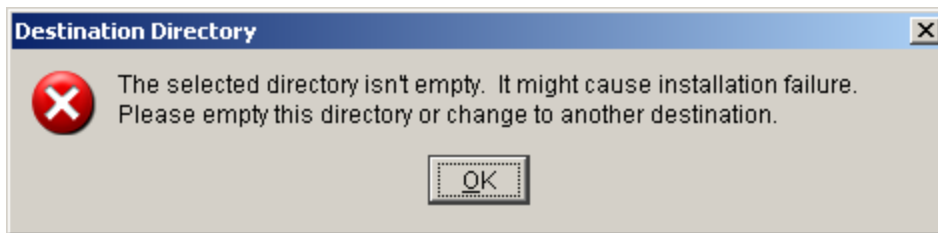
The Software License and Support Agreement panel of the Installation Wizard displays the Embarcadero Technologies license agreement. You must accept the agreement to proceed with the installation.

- 1 Click **I accept the terms of the license agreement** option and then click **Next** to open the Directory Panel.

### Installation Wizard - Directory

Choose the destination directory where you want to install the Enterprise Portal.

**NOTE:** If the selected directory contains other files, an error dialog appears. The installation cannot continue unless the destination directory is empty. Click **OK** to close the dialog and ensure that the selected directory is empty.



- 2 Click **Next** to advance to the **Host and Port** panel.

### Installation Wizard - Host and Port

The value in the Host field must be the host name, for example DEWKBROW01, the fully qualified network name, for example DEWKBROW01.embarcadero.com, or the IP address of the system you are installing on.

The default port number is 80. If another application such as another browser-based application is already using port 80 on this system, enter an unused port number between 0 and 65535. For example, 0 and 139 are used for the NetBios Session Service in Windows. The ports in use depend on the platform and the services installed on the system. A commonly-used alternative is 8, although using a high number such as 10000 will probably reduce the chance of a conflict.

OPTIONAL. To enable users to log in to the Portal using their domain names and passwords and the Lightweight Directory Access Protocol (LDAP), select Enable LDAP Authentication. Additional fields will appear on the dialog where you must specify the following:

- **LDAP URL:** The URL of the server running LDAP, such as `ldap://10.40.40.94:389`.
- **Manager DN:** The domain name for the administrative user that is used in order to authenticate users. This is the account that the portal will use to connect to the LDAP server to validate the user's credentials, for example, `CN=User1,OU=Users,OU=ER STUDIO,DC=Torlabdomain,DC=com`.
- **Manager Password:** In order to search for users, uses this password.
- **Search Base DN:** Name of the root node in LDAP from which to search for users, such as `OU=Users,OU=ER STUDIO,DC=Torlabdomain,DC=com`.
- **Search Attribute:** The attribute in LDAP holding the user's login name, such as `sAMAccountName` ( for ActiveDirectory).
- **Test User/Password:** A sample user/password to attempt to authenticate against LDAP server, such as `user/password`. The installer uses this information to validate the given LDAP information.

Click **Next** to advance to the **Repository Information** panel.

If the specified port is invalid or in use by another application, you will receive an error message and need to change the Port setting to an unused port number before proceeding.

**Install Wizard - Repository**

Specify the target ER/Studio Repository that is the information source for the Reporting Repository. The Reporting Repository is the database the Enterprise Portal uses to store the information it gathers from the ER/Studio Repository.

**NOTE:** It is recommended that you gather the ER/Studio Repository information before proceeding.

Field	Description
<b>Repository Server</b>	
<b>Version</b>	Select the corresponding version of the ER/Studio Repository, 4.0, 4.5 or 5.0.
<b>Repo Server Name</b>	Specify the name of the machine where the ER/Studio Repository is installed.
<b>Super User Login</b>	Specify the user name for a user with the Super User role in the ER/Studio Repository.
<b>Password</b>	Specify the password for a user with the Super User role in the ER/Studio Repository.
<b>Repository Database</b>	
<b>DBMS Server Type</b>	Select the server type: <ul style="list-style-type: none"> <li>• Oracle</li> <li>• IBM DB2 Universal Database</li> <li>• Microsoft SQL Server</li> </ul>
<b>DBMS Host/Port</b>	Specify the host name of the machine that contains the ER/Studio repository database. This information is supplied by the DB Administrator.
<b>DataBase Name</b>	Enter the name of the ER/Studio Repository database.
<b>User Name</b>	Enter the user name for the ER/Studio Repository database.
<b>Password</b>	Enter the password for the ER/Studio Repository database.  <b>Note:</b> The password fields are preserved when navigating back and forth during the installation process.

- 1 After you have entered the required information, click **Connect** to test the JDBC connection.  
The installation cannot continue until this connection has been established and the ER/Studio Repository login and password have been validated.
- 2 After all tests are passed and the connection is established, the Next button becomes available.
- 3 Click **Next** to advanced to the Reporting Repository page.

### Install Wizard - Reporting Repository

On this page specify the details for the Reporting Repository.

**NOTE:** There may be naming conflicts between the ER/Studio Repository and the Reporting Repository. If both repositories are installed on the same database server, different schema owners should be used.

- 1 Enter the information as indicated below.

Field	Description
DBMS Server Type	Select the server type: <ul style="list-style-type: none"> <li>• Oracle</li> <li>• IBM DB2 Universal Database</li> <li>• Microsoft SQL Server</li> </ul> <b>Note:</b> The DBMS server type must match that of the ER/Studio Enterprise Repository.
DBMS Service Host: Port	Enter the host name and port number of the DBMS Service. The DB Administrator can provide you with this information.
The information requested depends on the server type selected: <b>Database Name</b> (if MSSQL is selected) <b>SID</b> (if Oracles is selected) <b>DBName</b> (if IBM DB2 is selected)	This information is supplied by the DB Administrator. <b>Note:</b> If you select the Server Type <b>IBM DB2</b> , an additional field appears where you must enter Tablespace information. With <b>DB2</b> , the tablespace must exist in the database and must be usable by this user with the input database name. If you select the Server Type <b>Oracle</b> an additional field appears asking for Tablespace information. With <b>Oracle</b> , the tablespace must exist in the database and it can be used by the input admin user.
Database Admin User	This information is supplied by the DB Administrator. The Admin User must have the privilege to create reporting database tables, etc.
Database Admin Password	This information is supplied by the DB Administrator.
Same as Admin (This is only available for the MSSQL database.)	If the <b>Same as Admin</b> is not checked (default setting), you need to enter a User Name and Password for read/write access to the reporting database and click <b>Next</b> .  If the <b>Same as Admin</b> is checked the User Name/Password fields disappear and the Admin Name and Password are used as User Name and Password.
User Name (This is only available for the MSSQL database.)	Enter the User Name necessary to access the Enterprise Portal's Reporting Repository.
Password (This is only available for the MSSQL database.)	Enter the Password necessary to access the Enterprise Portal's Reporting Repository.



- 2 Select one of the three options for connecting to the Reporting repository and click **Connect**.

Option	Description
Create new Repository database or initialize an existing, empty database	<p>This assumes that the Reporting Repository database exists and it is empty with no tables. The “Admin” user must have the privilege to create Reporting Repository schema. The Installer will run the SQL to create the Reporting Repository.</p> <p><b>Note:</b> If the server type is MSSQL, the database is created by the installer. If the server type is Oracle or DB2, the Reporting Repository is the Database Administrator’s responsibility.</p> <p>The portal installer is now ready to insert the Reporting Repository tables. An Oracle DB, the SID must exist for the installer to insert the tables with the given user as the Owner.</p>
Connect to an existing Repository database	<p>If you choose this option, the Reporting Repository must exist and all Reporting Repository tables must be ready to be accessed by the Enterprise Portal.</p> <p><b>Note:</b> If you are upgrading your Enterprise Portal installation, select this option to retain your connection to the ER/Studio Repository.</p>
Reinitialize current Repository database	<p>The Reporting Repository database exists. The install will drop all reporting tables and create a new reporting schema. The “Admin” must have the privilege to drop the tables and create the Reporting Repository schema.</p> <p><b>Caution:</b> This is a destructive action.</p>

- 3 After the connection is established the Next button becomes available. Click **Next** to advance to the Solution Repository page.

### Installation Wizard - Solution Repository

You must specify the details for the runtime database called the Solution Repository. This is the location where the access control list, report settings, and other runtime information is stored and maintained. Requests made to the platform to have actions executed rely on the action being defined in the Solution Repository.

1 Enter the information as indicated below.

Field	Description
DBMS Server Type	Select the server type: <ul style="list-style-type: none"> <li>• Oracle</li> <li>• IBM DB2 Universal Database</li> <li>• Microsoft SQL Server</li> </ul> <b>Note:</b> The DBMS server type must match that of the ER/Studio Enterprise Repository.
DBMS Service Host: Port	Enter the host name and port number of the DBMS Service. The DB Administrator can provide you with this information.
Information requested here depends on the server type selected: <b>Database Name</b> (if MSSQL is selected) <b>SID</b> (if Oracles is selected) <b>DBName</b> (if IBM DB2 is selected)	This information is supplied by the DB Administrator. <b>Note:</b> If you select the Server Type IBM DB2, an additional field appears where you must enter Tablespace information. With DB2, the tablespace must exist in the database and must be usable by this user with the input database name. If you select the Server Type Oracle an additional field appears asking for Tablespace information. With Oracle, the tablespace must exist in the database and must be usable by the input admin user.
Database Admin User	This information is supplied by the DB Administrator. The Admin User must have the privilege to create solution database tables, etc.
Database Admin Password	This information is supplied by the DB Administrator.
Same as Admin (This is only available for the MSSQL database.)	If Same as Admin is not selected (default setting), you need to enter a User Name and Password for read/write access to the solution database and click Next.  If Same as Admin is selected, the User Name/Password fields disappear and the Admin Name and Password are used as User Name and Password.
User Name (This is only available for the MSSQL database.)	Enter the User Name necessary to access the Enterprise Portal's Solution repository.
Password (This is only available for the MSSQL database.)	Enter the Password necessary to access the Enterprise Portal's Solution repository.

2 Select one of the three options for connecting to the repository and click **Connect**.

Option	Description
Create new Repository database or initialize an existing, empty database	The Solution Repository exists and is empty. The "Admin" user must have the privilege to create Solution Repository schema. The Installer will run the SQL to create the Solution Repository. <b>Note:</b> If the server type is MSSQL, the database is created by the installer. If the server type is Oracle or DB2, the Solution Repository is the Database Administrator's responsibility.  The portal installer is ready to insert the Solution Repository tables. With Oracle DB, the SID must exist for the installer to insert the tables with the given user as the Owner. <b>Note:</b> If you are upgrading your Enterprise Portal installation and select this option you will lose any permissions setup and all obsolete logs will be purged.

Option	Description
Connect to an existing Repository database	The Solution Repository exists and all Solution Repository tables are ready to be accessed by the Enterprise Portal. <b>Note:</b> If you are upgrading your Enterprise Portal installation, select this option to retain your connection to the ER/Studio Repository. Permissions will be preserved but some of the solution repository information such as logs, will become obsolete. If you choose this option, at the end of the installation you will be prompted to update the solution repository via the Admin dashboard.
Reinitialize current Repository database	The Solution Repository database exists. The install will drop all solution tables and create a new solution schema. The "Admin" must have the privilege to drop the tables and create the Solution Repository schema. <b>Caution:</b> This is a destructive action.

- Once the connection is established the Next button becomes available. Click **Next** to advanced to the Summary Information page.

### Installation Wizard - Summary Information

The Summary Information page summarizes the install information.

- Review all the summary information. Click **Back** if you want to make any changes; otherwise, click **Install** to start the install process. A panel appears showing the progress of the installation.
- When the Installation Wizard finishes, the final page appears.

You may see a message indicating that start up of the Apache Tomcat (ER/Studio Enterprise Portal) service is in progress. However this occurs only if the service is still in the process of starting when the installation is complete.

- Click **Finish**.

**NOTE:** If any errors occur during the installation, an Error page opens, which directs you to the log file located in the directory where you were installing the application - for example: C:\Program Files\Embarcadero\ERStudioEnterprisePortal1.0\log.txt.

### Starting the Enterprise Portal Application

Once the installation is complete, open a supported Web browser (see [Client System Requirements](#)) and browse to `http://<host>:<port>/ersportal/`, where <yourhost> and <your port> are the values you specified in the [Installation Wizard - Host and Port](#) fields above. The browser will show the portal Login page. Enter a valid login and password for the ER/Studio Repository as specified in the Enterprise Portal installer. If you have chosen to enable LDAP (Lightweight Directory Access Protocol) during the installation, you will need to provide your domain name as part of your username in the format of `domain name\username`. The login must be a user with the Super User role in the ER/Studio Repository to access the Admin functionality in the portal.

## Upgrading ER/Studio Enterprise Portal

When a new version of ER/Studio Enterprise Portal becomes available, you should upgrade to take advantage of the latest features and fixes. Also, when the ER/Studio Repository software is upgraded, you must upgrade the Portal. The Repository and Portal software releases are synchronized to ensure Portal users can take advantage of any Repository updates.

Upgrading the Portal requires a reinstallation of the Portal application and you should follow the installation instructions in the previous section to accomplish this.

Once the Portal application is upgraded, you must resynchronize the Portal with the Repository. ER/Studio upgrades usually require the diagrams to be updated to the latest version. Once the Repository diagrams have been updated, you'll need to synchronize the Portal Repository to ensure that it is up to date. For information on synchronizing the Portal with the Repository, see the "Administrative Tasks" section of the *User Guide*.

## Licensing ER/Studio Enterprise Portal

After installing the Enterprise Portal, you must set up the licensing. The Enterprise Portal has a standard license that allows one administrator connection. You can then purchase additional add-ons with 5, 10, 20, or 50 connections. Each add-on has a serial number that must be registered for validation.

You can also set up an [Evaluation License](#).

The Enterprise Portal uses **Concurrent User Connection**-based licensing. The total number of connections at one time are restricted to the number purchased. However there is no restriction on a login name being used more than once.

### Additional License Information

Inactive users are automatically timed out 30 minutes after the last user interaction. This is so licenses/connections are freed up even if a user forgets to close the browser or logout.

The Administrator can view the current sessions logged into the portal on the License Admin interface.

The License Admin interface displays the amount of time the users have been inactive.

The user activity is archived so that the Admin can see activity over time and determine if more licences need to be purchased.

## Managing Licenses

The elements of the License Administration page are explained below:

EMBARCADERO TECHNOLOGIES. Welcome Admin | Logout | Help

Home | Explore | Reports | Activity | Admin Search: [ ] Advanced

Admin License Administration

Use this page to manage your ER/Studio Enterprise Portal license

License Add-on Status: 1 base administrator session and UNLIMITED user sessions — 1

Serial No.	Days Left	Connections
DR7B-DP38T8-AMFLAA-3EKQ	23	UNLIMITED
KR7A-DPA8TS-A3FLNA-HE9Q	UNLIMITED	20
KRFA-SPADP8-BDFEBB-34YQ	UNLIMITED	5

Actions

Refresh | Register add-on license — 3

Current User Sessions: 2 — 4

#	User Name	Remote Host	Remote IP	Logged In Since	Inactive For	Action
1	Admin	toffinney01.embarcadero.com	10.40.16.68	Tue Aug 12 11:25:32 EDT 2008	06:40	Disconnect
2	Admin	dewkbrow01.embarcadero.com	10.20.10.20	Tue Aug 12 11:54:53 EDT 2008	04:56	

- 1 Displays the license Add-on Status that indicates how many user sessions are allowed.
- 2 Lists all registered and activated license add-ons.
- 3 There are two functional links:
  - **Refresh**: updates the licensing module by rereading the license file from the disk.
  - **Register add-on license**: opens the registration page and populates the registration code with a unique number that identifies the machine on which the portal is installed and is generated by the licensing module.
- 4 Lists the users that are currently using the application. This table also shows the remote host id, remote IP address, the date and time when the user logged in, and how long the user has been inactive.

**NOTE:** If the maximum number of connections is reached, the next login attempt will get the following error message: "Too many open sessions, please contact your administrator or [Key@embarcadero.com](mailto:Key@embarcadero.com) to purchase more licenses."
- 5 Allows to the administrator to log off (disconnect) users. The current user cannot disconnect himself.

## Registering Purchased Licenses

- 1 Log in to the application as an Administrator.
- 2 On the Dashboard, click **Admin** to open the Admin Services page, then click **License Admin**.
- 3 Under Actions, click **Register add-on license** and a **Product Registration Page** appears.
- 4 Enter the serial number that you received from [Key@embarcadero.com](mailto:Key@embarcadero.com) and click **Next**.

**NOTE:** You must have a serial number for each add-on. For example if you bought 25 licenses you would receive two serial numbers, one for 20 connections and one for five. You must register each serial number in order to have the 25 connections. You must complete all the licensing steps for each serial number to register each add-on.

- 5 The Registration Code is a number that identifies the machine and is generated by the licensing module.
- 6 On the **Embarcadero Product Registration Login** page, you can login to your existing Developer Network account or create a new account.
  - If you have an existing account enter your login name or e-mail address, your password, and click **Next**.
  - Click **Create Account** if you need a new user account. Fill in the required information and click **Next**.
- 7 Review the Product, Serial Number, and Registration Code information on the Product Registration page and then select either to download or e-mail the activation file.
- 8 If you select **Download**, a File Download dialog opens. Click **Save** and save the file in the appropriate folder Windows folder: [product install folder]\license, for example C:\Program Files\ERStudioEnterprisePortal1.0\license.
- 9 If you choose to have the activation file e-mailed to you, you will get an auto-generated message from Embarcadero-licensing. Open the e-mail and save the attached *reg\*.txt* file in the appropriate Windows folder: [product install folder]\license, for example C:\Program Files\ERStudioEnterprisePortal1.0\license, before starting the product:
- 10 Close the Product Registration Page.
- 11 Click **Refresh** on the License Administration page and the add-on license information is updated.

EMBARCADERO TECHNOLOGIES.

Home | Explore | Reports | Activity | Admin

Admin | License Administration

Use this page to manage your ER/Studio Enterprise Portal license

License Add-on Status: 1 base administrator session and 20 user sessions

Serial No.	Days Left	Connections
KR7A-DPA8TS-A3FLNA-HE9Q	UNLIMITED	20

Actions

[Refresh](#) | [Register add-on license](#)

Current User Sessions: 3

#	User Name	Remote Host	Remote IP	Logg
---	-----------	-------------	-----------	------

## Requesting an Evaluation License

The product is shipped with a base license that allows one administrator connection with no expiration date. An evaluation license is effective for 30 days with unlimited connections. At expiration, those connections are no longer included when calculating the number of available connections. The evaluation license add-on status displays how many days are left in the evaluation period.

To request an Evaluation license contact [Key@embarcadero.com](mailto:Key@embarcadero.com)

License Add-on Status: 1 base administrator session and UNLIMITED user sessions

Serial No.	Days Left	Connections
DR7B-DP38T8-AMFLAA-3EKQ	30	UNLIMITED
KR7A-DPA8TS-A3FLNA-HE9Q	UNLIMITED	20
KRFA-SPADP8-BDFEBB-34YQ	UNLIMITED	5

— Evaluation License

## Recommended Next Steps

Once the Enterprise Portal is licensed, the next step is to synchronize the reporting repository. The first time you synchronize the reporting database, it is recommend that you execute it manually via the *Execute Synchronization Process* action on the Synchronization Admin page. When synchronizing with a large repository, use the filtering mechanism to enable you to access diagrams you are most interested in reporting on immediately. The synchronization process can be quite lengthy depending on the size of the ER/Studio Repository. For more information, see in the “Filtering Diagrams“ in the *User Guide*.

Once the initial synchronization is complete, you can then schedule a daily synchronization using the default schedule via the *Schedule Synchronization Process* action on the Synchronization Admin page or set up a custom schedule using the Subscription Admin page. For more information please refer to *Executing the Synchronization Process* and *Scheduling the Synchronization Process* in the Administrator’s Guide located in the online help.

**NOTE:** The initial synchronization takes much longer than subsequent synchronizations.

You may also want to set up user permissions where levels of access can be set for groups or individuals. For more information please refer to *Administering Permissions* in the Administrator’s Guide located in the online help.

## Uninstalling the ER/Studio Enterprise Portal

After you install the Enterprise Portal, you can remove the application by using the uninstall option in the InstallShield Wizard.

- 1 Select **Start > Programs > ERStudioEnterprisePortal1.0 > Uninstall Enterprise Portal** to start the InstallShield wizard.
- 2 Click **Next** to advance to the Summary Panel.
- 3 Review the information in the Summary Information panel and click **Uninstall**.
- 4 Once the uninstall is completed click **Finish** to close the InstallShield wizard.
- 5 For a complete uninstall, a system reboot may be required. You will be given the choice to reboot immediately or at a later time. Make your selection and click **Finish**.

The Enterprise Portal uninstaller does not uninstall the database. It is the Database Administrator’s responsibility to delete the repository solutions and databases if you decide to permanently delete the Enterprise Portal.

### **Backing Up License Registration, Diagram Images, and Created Reports**

When you uninstall, the uninstaller backs up user-created reports and diagram images. When you reinstall, if you choose to “Connect to existing repository database” on the Reporting Repository wizard page the user-created reports and diagram images are available again.

Also, if the current portal has the license registration, you do not have to re-register for the next installation.

**CAUTION:** This restoration function only works for the files backed up immediately prior to reinstallation.