



Product Documentation

---

# **ER/Studio Data Architect**

New Features Guide

Version 8.5

October 7, 2009

---

Copyright © 1994-2009 Embarcadero Technologies, Inc.

Embarcadero Technologies, Inc.  
100 California Street, 12th Floor  
San Francisco, CA 94111 U.S.A.  
All rights reserved.

All brands and product names are trademarks or registered trademarks of their respective owners.  
This software/documentation contains proprietary information of Embarcadero Technologies, Inc.; it is provided under a license agreement containing restrictions on use and disclosure and is also protected by copyright law. Reverse engineering of the software is prohibited.

If this software/documentation is delivered to a U.S. Government Agency of the Department of Defense, then it is delivered with Restricted Rights and the following legend is applicable:

Restricted Rights Legend Use, duplication, or disclosure by the Government is subject to restrictions as set forth in subparagraph (c)(1)(ii) of DFARS 252.227-7013, Rights in Technical Data and Computer Software (October 1988).

If this software/documentation is delivered to a U.S. Government Agency not within the Department of Defense, then it is delivered with Restricted Rights, as defined in FAR 552.227-14, Rights in Data-General, including Alternate III (June 1987).

Information in this document is subject to change without notice. Revisions may be issued to advise of such changes and additions. Embarcadero Technologies, Inc. does not warrant that this documentation is error-free.

# Contents

- New Features Summary ..... 4
  - Top New Features..... 4
  - General Updates..... 4
  - DBMS Updates ..... 5
- Details of Top New Features..... 8
  - Bi-Directional Object Commenting between Portal and ER/Studio DA..... 8
  - Portal Integration to Browse Repository within ER/Studio DA ..... 10
  - Portal Search Integration to Retrieve Models from ER/Studio Repository ..... 11

# New Features Summary

The new features supported by ER/Studio Data Architect (previously known as ER/Studio) 8.5 fall into the following categories.

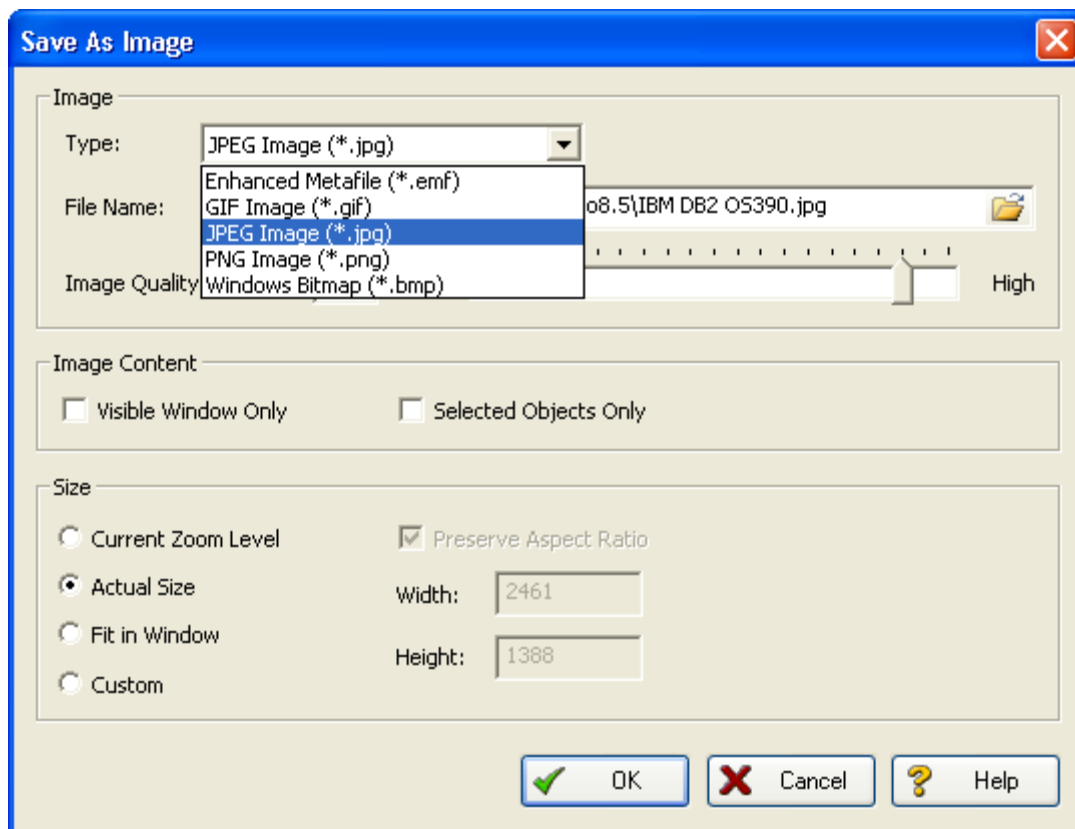
- [Top New Features](#)
- [General Updates](#)
- [DBMS Updates](#)

## Top New Features

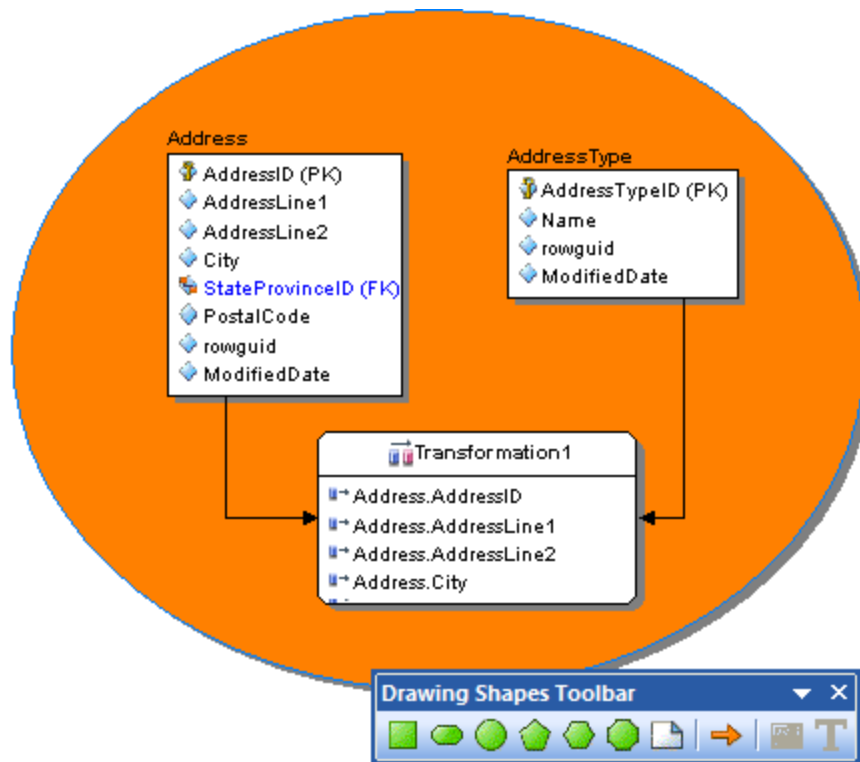
- [Bi-Directional Object Commenting between Portal and ER/Studio DA](#)
- [Portal Integration to Browse Repository within ER/Studio DA](#)
- [Portal Search Integration to Retrieve Models from ER/Studio Repository](#)

## General Updates

- **Improved Repository Performance:** Checking in and out, retrieving, and updating diagrams is now much faster.
- **Image Export Improvements:** Export an image of diagram in any of the following formats: Enhanced Metafile (.emf), GIF Image (.gif), JPEG Image (.jpg), and Windows Bitmap (.bmp).



- **Drawing Shape Support on VDL diagrams:** Choose any of the tools on the Drawing Toolbar including the line drawing tool to enhance the representation of visual data lineage diagrams.

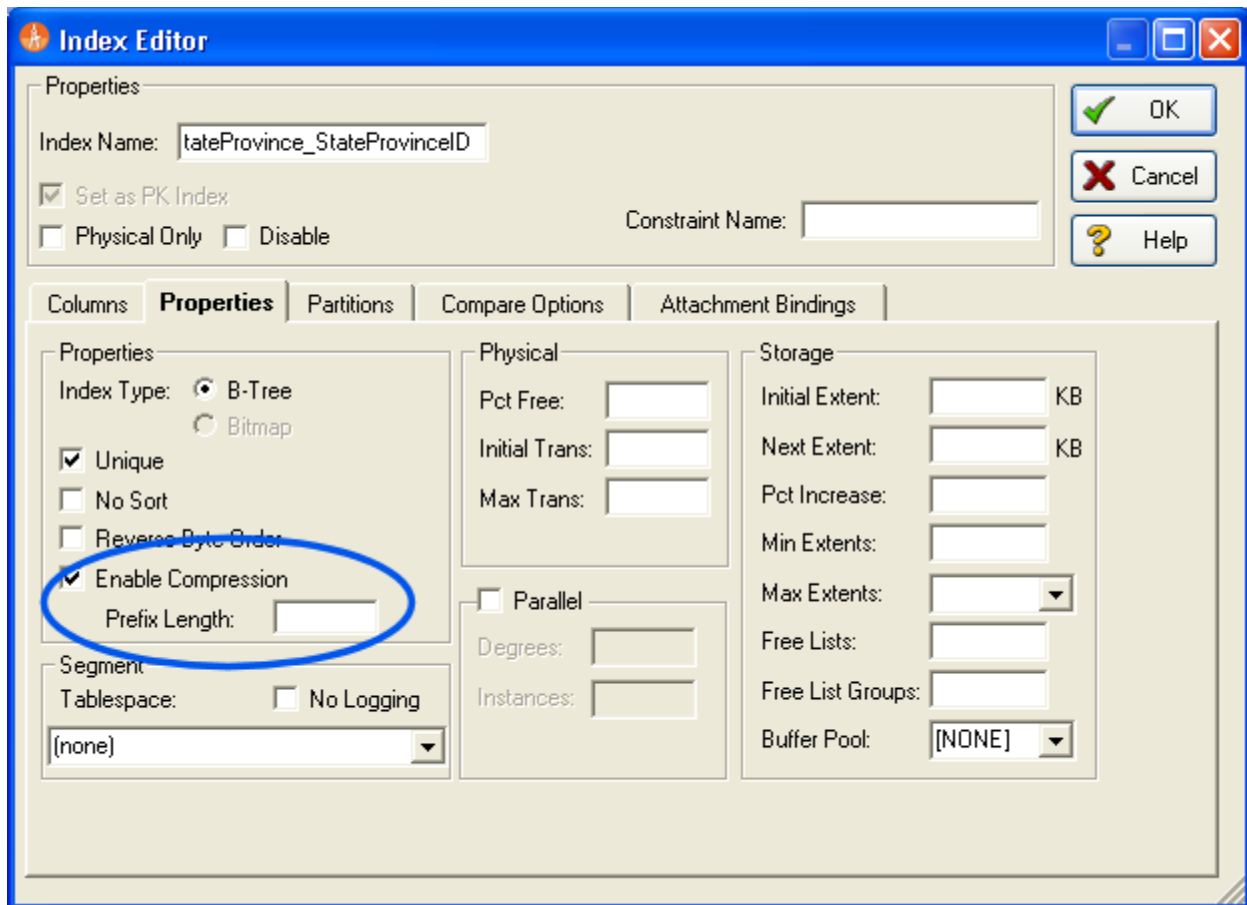


## DBMS Updates

- Teradata 12.0 Support
- Interbase 2009 Support

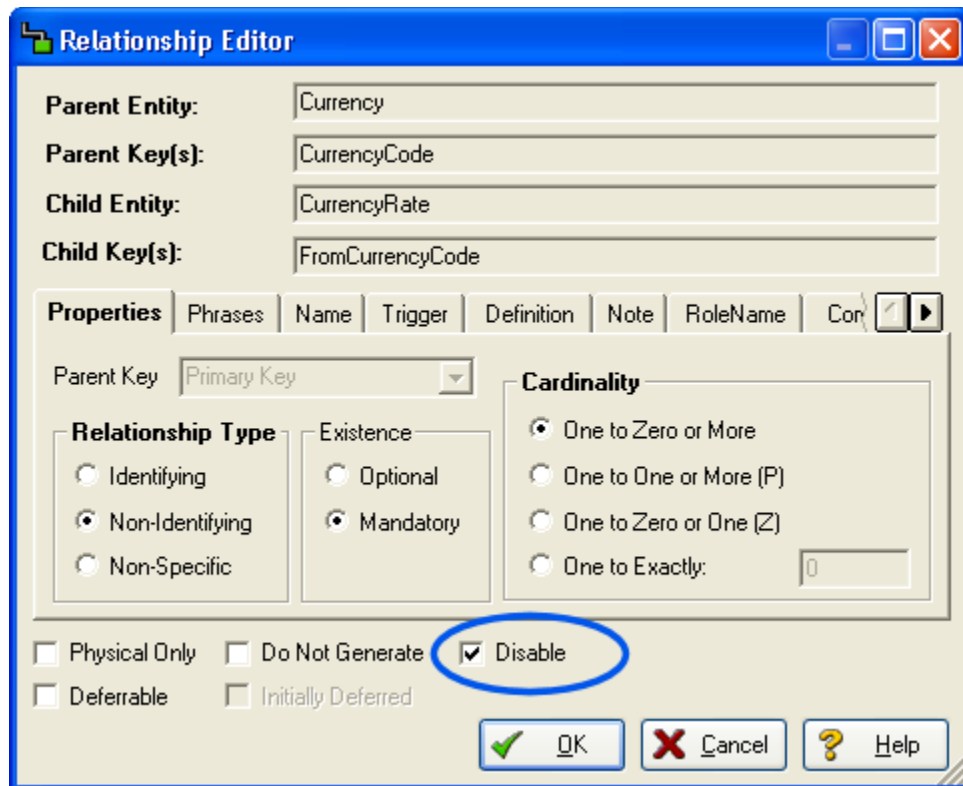
- **Oracle Updates**

- **Compression on index-organized tables:** On the Properties tab of the Index Editor, there is now an option to enable compression for concatenated indexes.



**Enable Compression:** (*COMPRESS*) Select to enable index compression. Compression can repress duplication of keys in non-unique indexes. For concatenated indexes (indexes with multiple columns), the compress option can reduce the size of the index by more than half. For concatenated indexes (indexes with multiple columns), compression can reduce the size of the index by more than half. The compress option allows you to specify the prefix length for multiple column indexes.

- **Support for enabling/disabling constraints:** On the Relationship Editor, you can choose to disable the foreign key of a child entity so the foreign key is not propagated from the parent to the child entity.



**Disable:** This option is available for the Oracle Platform only. If selected, disables the foreign key of a child entity. The following is an example of the DDL generated for the child entity when the FK is disabled:

```
CREATE TABLE Entity2(
PK2 CHAR(10) NOT NULL,
a2 CHAR(10),
b2 CHAR(10),
PK1 CHAR(10) NOT NULL,
CONSTRAINT PK2 PRIMARY KEY (PK2),
CONSTRAINT RefEntity11 FOREIGN KEY (PK1)
  • REFERENCES Entity1(PK1) DISABLE
```

## Details of Top New Features

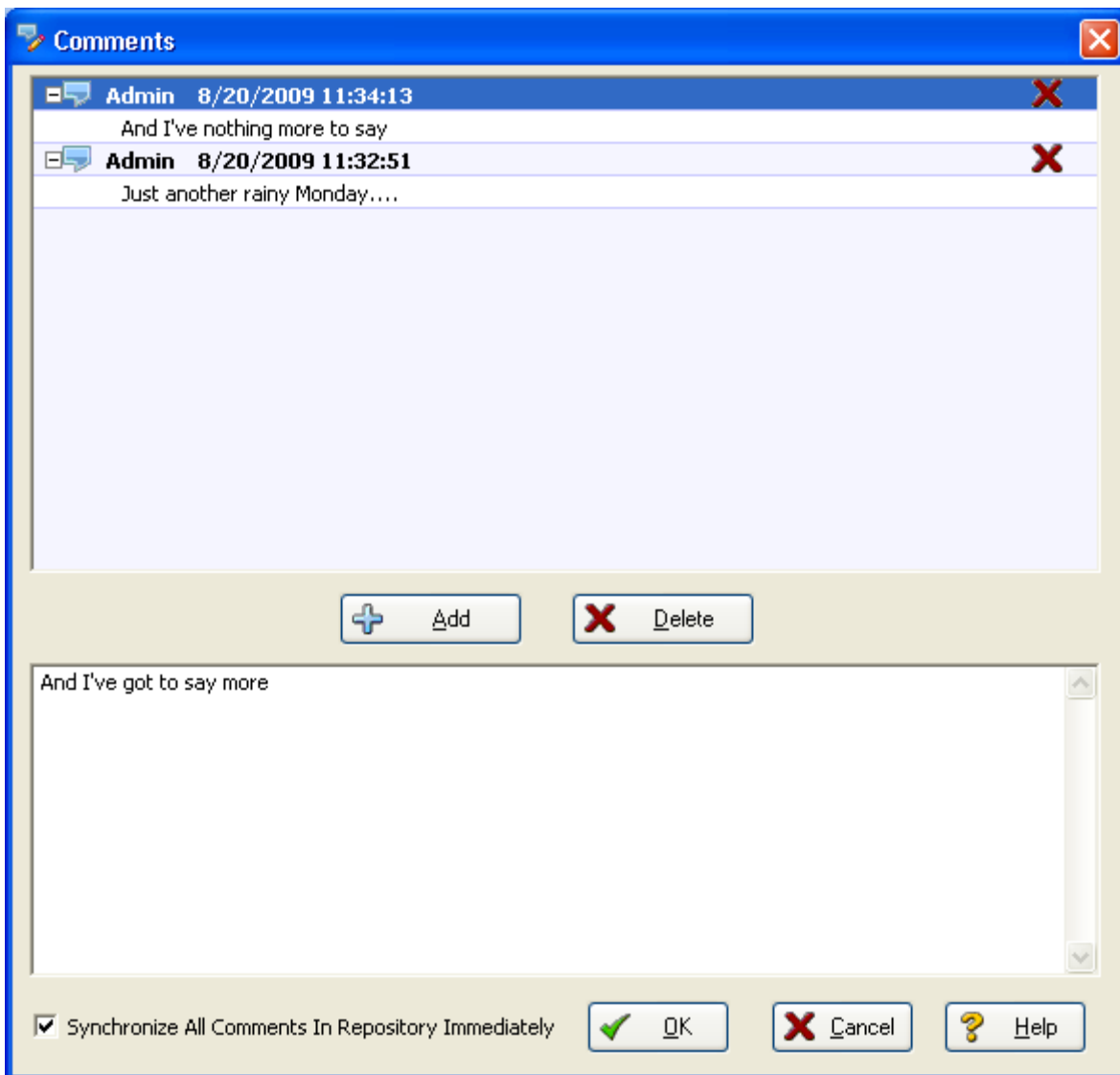
### Bi-Directional Object Commenting between Portal and ER/Studio DA

You can add comments to many database objects for your own documentation needs or for communicating your ideas when collaborating with others to develop a model. Repository users can share comments between ER/Studio Data Architect (ER/Studio DA) and ER/Studio Portal, so if a Portal user makes a comment on a model, submodel, or database object, ER/Studio users can view these comments and vice versa. Comments are stamped with the date and the name of the logged in user.

- 1 On the **Data Model Explorer** or **Data Model Window**, right-click the object you want to add comments to and then select **Comments...**

**NOTE:** Comments can be added to objects in the Repository without needing to check out the object.

The Comments editor displays where you can view or delete comments previously recorded or add new comments.





- 2 Enter the comment in the bottom area of the **Comment** editor and then click **Add**.
- 3 If you want the Repository to be updated immediately with the new comments, select **Synchronize All Comments In Repository Immediately**. This option is not available if you are not logged in to the Repository.
- 4 Add more comments if desired and then click **Save**.

**NOTE:** If you are adding comments to a Repository diagram, you can add and commit comments to an object without needing to check out or check in the diagram. Click the *Synchronize Comments* button in the Repository toolbar and your comments are added to the diagram, with your Repository user name and the comment date and time.

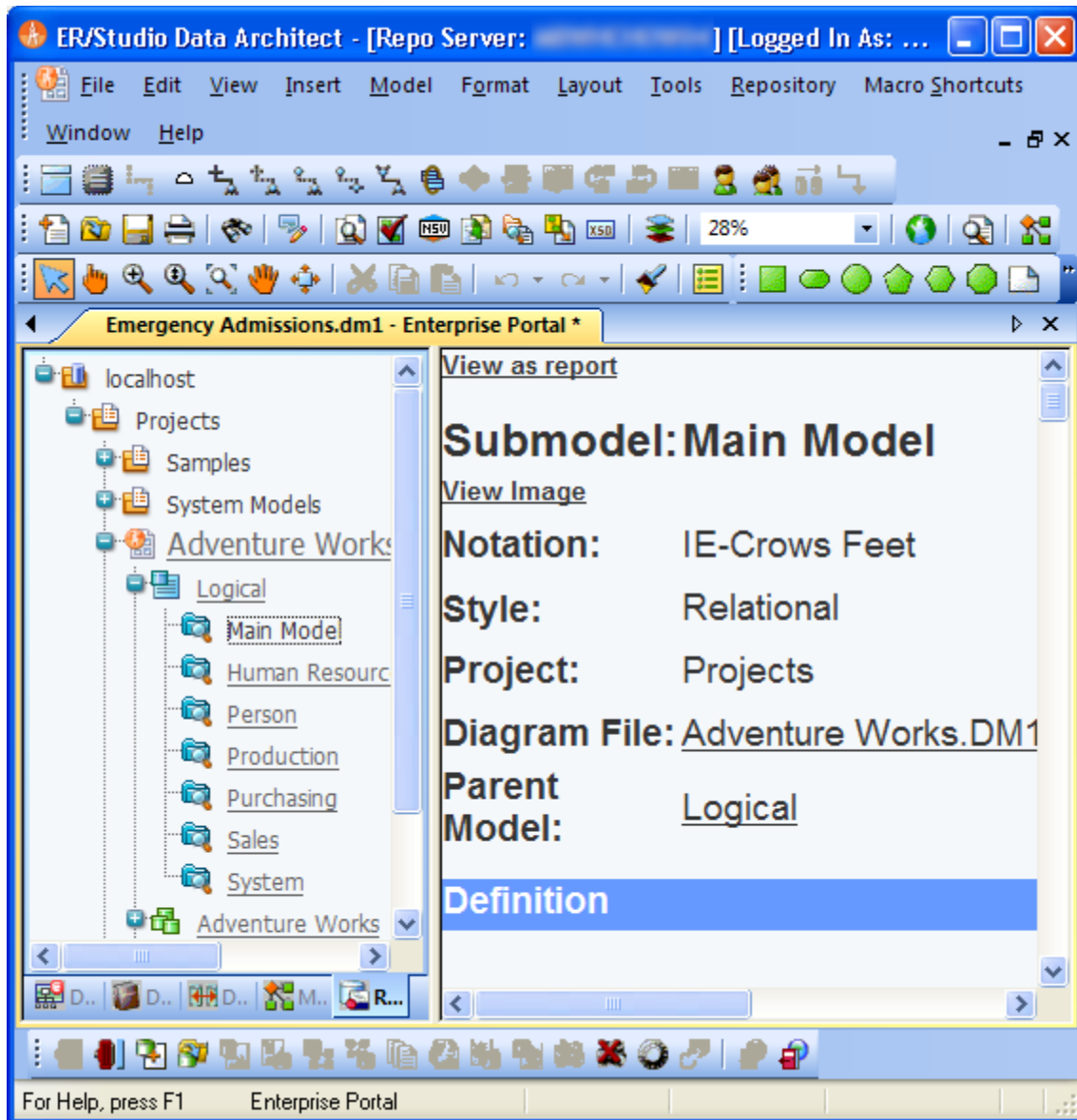
## Notes

- You can add comments to most ER/Studio DA objects, including the following object types:
 

• Alias	• Attachment Binding	• Attachment Types	• Attachments
• Attribute	• Attribute	• Auxiliary Table	• Column
• Data Lineage Column	• Data Lineage Source	• Data Lineage Table	• Data Movement Column
• Data Security	• Database	• Diagram	• Dictionary
• Dictionary Default	• Dictionary Rule	• Domain	• Entity
• Function	• Logical Model	• Logical Submodel	• Package and Object Type
• Physical Model	• Physical Submodel	• Procedure	• Reference Value
• Relationship	• Security	• Security Binding	• Stogroup
• Synonym	• Table	• Tablespace	• User Data Type
• View	• View Column	• Visual Data Lineage Objects	
- For ER/Studio Repository users, when logged in to the Repository, any comments added are stamped with the Repository user name and date.
- Comments are stamped with the user name and comment creation date and time.
- You can delete the comment by clicking the X for the comment in the Comments dialog.
- Once logged in to the Repository, you can share your comments with other ER/Studio DA users by storing them with the diagram file in the Repository.  
*To upload your comments to the Repository, click Repository > Update Comments.*  
*To download existing or new comments in the open diagram, click Repository > Update Comments.*
- Access the comment editor via the comments tool on the modeling toolbar, through the context menu, or by clicking *Edit > Comments*.
- You can add a comment to one object at a time. If more than one object is selected the Comments... option will not be available.

## Portal Integration to Browse Repository within ER/Studio DA

The Repository window displays reports generated by the ER/Studio Portal when you click an item in the Repository explorer. You can click links in the report displayed to view other reports, generate a report in a different format, view related reports, and attach labels and comments to your reports.

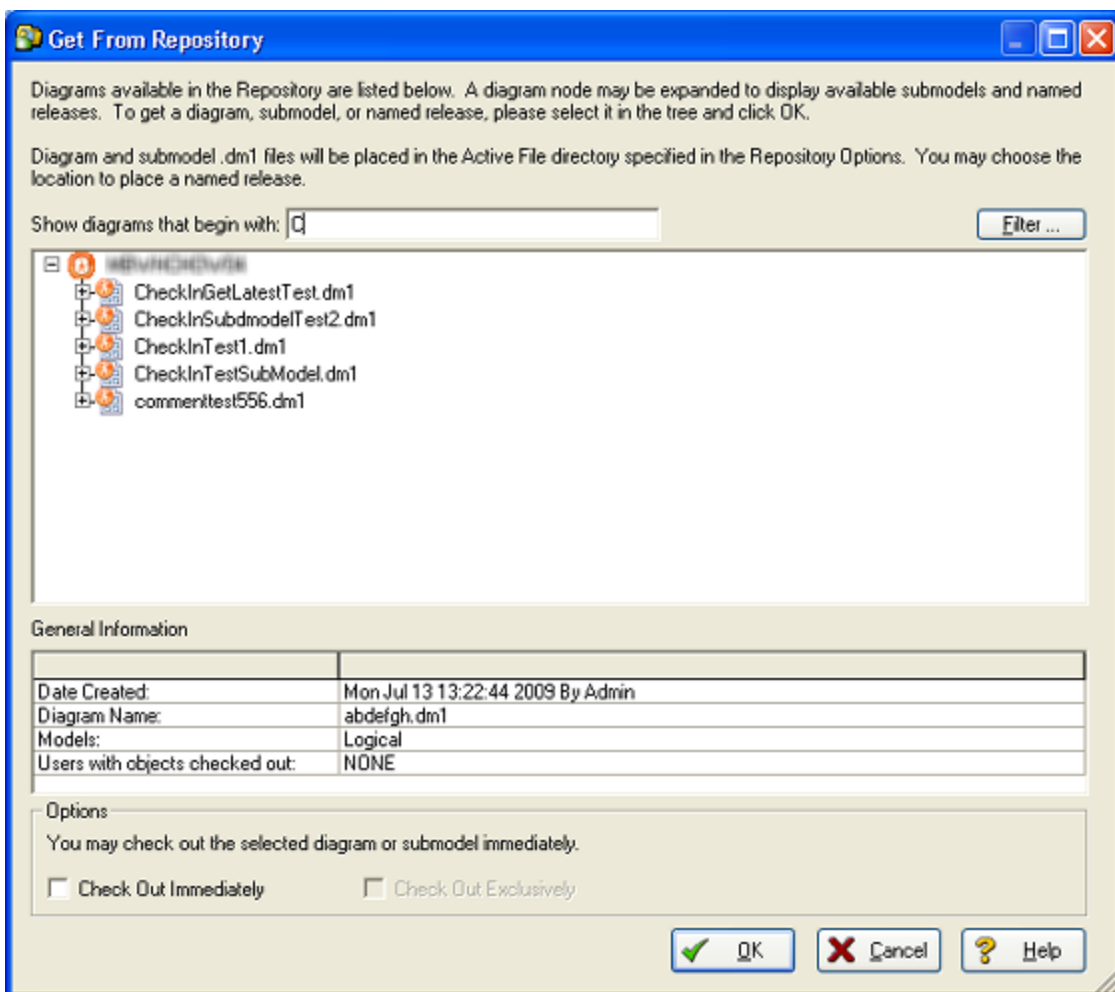


## Portal Search Integration to Retrieve Models from ER/Studio Repository

Retrieving repository objects downloads copies of selected diagrams, submodels, or named releases from the Repository onto the user's local machine. The data model, submodel or named release is copied from the Repository to your local system. If a local version of the object exists, the Get from Repository operation refreshes the local copy with the version from the Repository.

**NOTE:** Permissions assigned to your user account in the Repository Security Center determine what type of access you have to Repository objects. For more information, see [About Repository Permissions](#).

- 1 Log in to the Repository.
- 2 Click **Repository > Diagrams > Get from Repository**.



- 3 In the **Get From Repository** dialog, there are three ways to find a diagram.
  - Browse to and then select the object.
  - In the **Show diagrams that begin with:** field, enter the first few letters of the diagram name. As you type the list of diagrams updates to display just the diagrams that match the letter or letters entered.

- Click **Filter** to enter search criteria to limit the results shown in the list of repository objects. The Filter function uses the ER/Studio Portal to access the Repository.
- If you are already logged in to the Portal, the Filter Diagram List displays where you can enter search criteria.
- If you are not already logged in to the Portal, you are prompted to log in now. ER/Studio DA tries to connect to the Portal specified in the Repository Options. For more information, see “Configuring the Repository and Portal” in the *ER/Studio Data Architect User Guide*.

For more information on using the Filter option, see [Filtering the Search Results](#).

- 4 To make changes to the object, if you have permission to make changes, select **Check Out Immediately**, otherwise the file will be read-only.

**TIP:** You can prevent other users from making changed to the object by selecting Check Out Exclusively. Otherwise, when you check in your changes you can resolve any differences between your version and the version in the Repository if another user checked in changes to the same object. For more information, see “Checking In Objects” in the *ER/Studio Data Architect User Guide*.

- 5 Click **OK**.

The object selected is copied from the Repository to the Models directory as specified in Tools > Options > Directories > Models.

## Notes

- If a model with the same name already exists in the Models directory, as specified in Tools > Options > Directories > Models, then you will be alerted that proceeding with the Get from Repository operation will result in the local copy being overwritten with the version from the Repository. You can then choose to cancel the Get operation without affecting the contents of the local version.
- You can view a Named Release, but, in general, you may not modify it. A special Repository operation, Rollback Diagram, lets you Check In a Named Release as the latest version of a Diagram; once the Roll Back operation is completed, you can Check Out the Diagram (or a portion of it) to modify it.

## Filtering the Search Results

The Filter option in the Get Diagram from Repository dialog gives you more control of the search and the results that match the filter options specified.

- 1 Click **Filter**, located on the right side of the Get Diagram dialog.
- 2 Select **Filter list of diagrams based on Enterprise Portal search criteria**.
- 3 Specify your search criteria in the following areas and then click **OK**.

The following provides additional information on the fields and options of the Advanced Search.

- **Search Text:** Specify that the property value starts with, contains, ends with, or is an exact match to the text. You can also search for text that sounds like the search string by selecting *Include matches for similar-sounding words*. To make your searches more precise and to get more useful results, numerous operators are supported in the search string. For a listing of these operators and their usage, see [Creating Special Search Strings \(Using the Query Parser\)](#).

**NOTE:** The list of diagrams in the Portal may not be identical to the list in the Repository if a synchronization has not been performed recently. For information on synchronizing the Portal, see the “Administrative Tasks” in the *ER/Studio Portal User Guide*.

- **Modification:** Filter the results by the modification date and/or the name of the last person to modify the diagram.

- **Object Type:** Set filters to include all or only specific object types. You can select multiple individual items in the list by holding down the Ctrl key and clicking the items you want included.

4 Click **OK** to view the search results.

The names of the diagrams that match the filters provided will appear in the diagram area of the Get From Repository dialog.

5 Click the name of the diagram that you want to get from the Repository and then click **OK**.

**Creating Special Search Strings (Using the Query Parser).**

Operator	Search criteria	Example
AND (&&)	Contains ALL the search terms entered	apples AND oranges AND bananas apples && oranges && bananas
OR (  )	Contains at least one of the words entered	cats OR dogs cats    dogs
“ ”	Contains the exact phrase entered	“exactly this”
	Does NOT contain some of the words entered	apples NOT oranges NOT bananas
+	Must contain a term and may contain another	+apples oranges
-	Must contain a term and must not contain another	+apples -oranges
?	Matches with a single character replaced	c? (matches cat but not coat)
*	Matches zero or more characters	do* (matches do, dog, dogs, dogsled)
~	Terms are spelled similarly	land~ (matches land, sand, band)
“ ~ ”	Terms are found in close proximity to each other	“diagram update”~10 (matches objects where diagram and update appear within 10 words of each other)

The Portal uses Apache Lucene Query Parser to enable these search string operators. There are some special characters that when used within the syntax must be escaped. The following are special characters:

+ - && || ! ( ) { } [ ] ^ " ~ \* ? : \

To escape these characters, enter a backslash (\) before the special character.

For more details on the Lucene Query Parser, see [http://lucene.apache.org/java/2\\_4\\_0/queryparsersyntax.html](http://lucene.apache.org/java/2_4_0/queryparsersyntax.html).