



IDERA Team Server 2016

Quick Start Guide

Version 16.5/2016+

Published February 2017

© 2017 IDERA, Inc. All rights reserved. IDERA and the IDERA logo are trademarks or registered trademarks of IDERA, Inc. Database tools product names are trademarks or registered trademarks of Embarcadero Technologies, Inc., a wholly owned subsidiary of IDERA, Inc.

July 20, 2017

Contents

What is Team Server	5
Overview of the Team Server architecture.....	6
Overview of the user interface	7
Installation notes	8
System Requirements	8
Minimum requirements.....	8
Supported web browsers.....	9
Encrypting / SSL enablement requirements	9
Installation checklist.....	9
Conflicts.....	10
Database server requirements	10
Supported database platforms	10
Important information	10
Oracle	10
Microsoft SQL Server	11
IBM DB2	11
Install and Configure Team Server and Repository.....	12
Modify Configuration	19
Upgrading Team Server and Repository	19
Preparing the Upgrade.....	19
Repository User Preparations	19
Repository Administrator Preparations	20
Upgrading from Team Server 4.0.x, CONNECT 3.0.x or ER/Studio Portal 2.0.x	20
Upgrades scenarios	20
Upgrades from Team Server 2016 (16.X) which includes Repository 7.0.1.....	20
Upgrades from Repository 7.0.X (Standalone)	20
Upgrades from Repository prior to 6.5/6.6/6.7 (Standalone) and Team Server 4.0 or previous.....	21
Upgrade Configuration.....	21
Finishing the Upgrade	23
Important Notes.....	23
Overview of user connections	23
ER/Studio Team Server Quick Start Guide	3

Base - Admin Connection	23
ERSTeamServer - Team Server User Connection	23
TeamServer - Basic Connection	23
Concurrent User Connection	24
Exclusive User Connection	24
Manage licenses.....	24
Uninstalling Team Server	24
Tutorials	25
Connect and publish on Team Server	25
Connect ER/Studio Repository with ER/Studio Data Architect.....	25
Add a Diagram to ER/Studio Repository	26
Publish a Diagram on Team Server	26
View / follow / relate objects.....	26
View Objects	26
Follow Objects.....	27
Relate Objects	27
Add users.....	27
Add users using Security Center	27
Add a glossary	28
Import glossaries and terms	28
Add custom attributes	29
Add Attachments on ER/Studio Data Architect	29
Add Diagram Changes and Synchronize	29
Publish and Add the Custom Attributes.....	29
Add terms with custom attributes.....	29
Auditing the usage of login credentials by other product	30
Creating a data source and the related login credentials on Team Server.....	30
Using the login credentials from other product	30
Auditing the Usage.....	31
Receiving notifications	31
Example.....	32

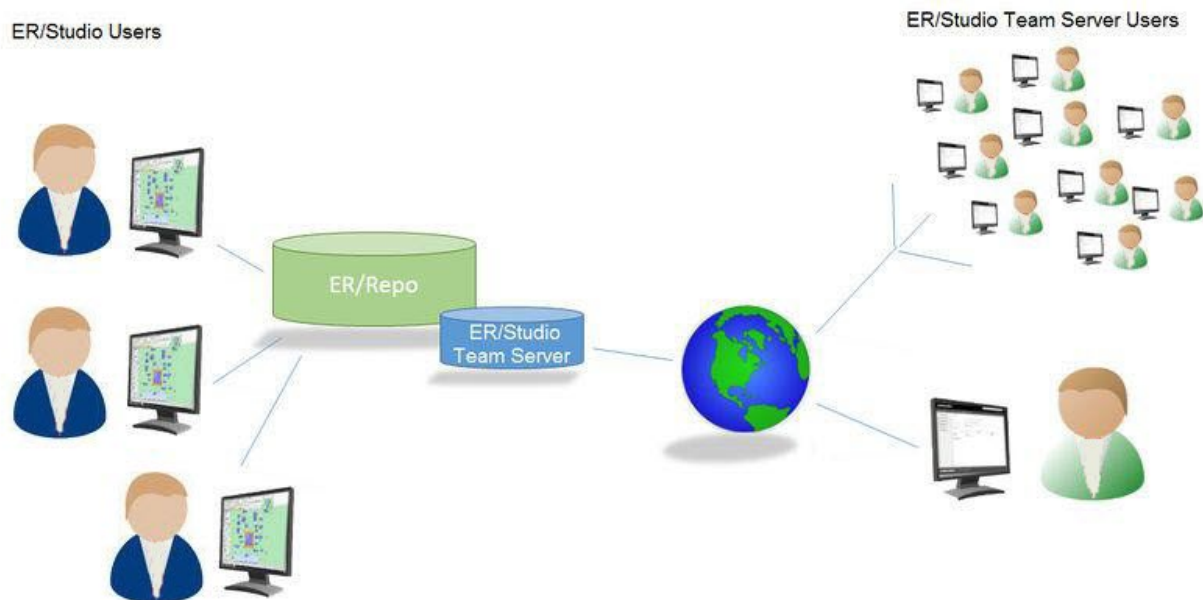
What is Team Server

Team Server is a web-based tool to access, search, edit and manage enterprise metadata. It provides access to [metadata from ER/Studio Repository](#) and it allows you to manage additional metadata, such as [glossaries](#) and [terms](#) or [data sources](#).

Team Server allows you to [keep track of your metadata](#) and [discuss its evolution](#) with [other users](#). It also lets you [create reports easily](#) from your data and searches, and export them to different file formats.

Team Server also enables you to:

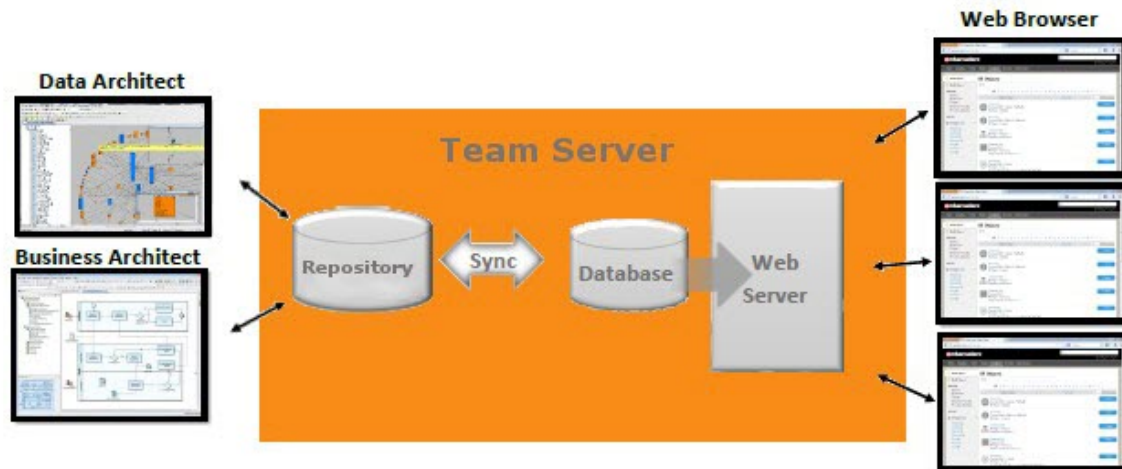
- [Search for all kinds of data](#) such as data definitions and [ER objects](#) in any model of your **ER/Studio Repository database**, including **ER/Studio Data Architect** and **ER/Studio Business Architect** diagrams. Team Server has [simple](#) and [advanced](#) searching capabilities to find ER objects and other resources, as well as their reuse and impact analysis.
- [Browse all the contents](#) of your **ER/Studio Repository** database, such as models and dictionaries, in a structured way.



Using a [web browser](#), you can [access Team Server](#) internally via your corporate intranet or externally via the internet. This way, you can access all of the information you need from anywhere.

Overview of the Team Server architecture

Team Server is a web server application with a database of its own, the **Reporting Repository**, which is synchronized with the **Repository**.



The following list describes the process of creating and accessing the metadata:

1. The metadata is created and maintained by **ER/Studio** clients.
2. That metadata is stored in the **ER/Studio Repository** database.
3. Through an **ETL** (extract, transform, and load) process, that metadata is pulled into the **Reporting Repository** database, which is [synchronized on a scheduled basis with the ER/Studio Repository database](#).
4. **Team Server** users can then [browse](#), [search](#), and [generate reports](#) on the synchronized metadata in the Team Server Reporting Repository.

The **Reporting Repository** database contains properties for logical and physical model ER objects, and is optimized for quick and efficient reporting of business-related metadata. The Reporting Repository provides easy access, browser and searching features on the ER/Studio Repository metadata, and allows storing and managing reports from previous queries and the metadata they rely on.

Note: Initially, physical properties that are specific to a relational database platform and/or version will not be extracted from the Repository or transferred to the reporting database.

Team Server is also a communications hub and information center. Activity streams provide the following:

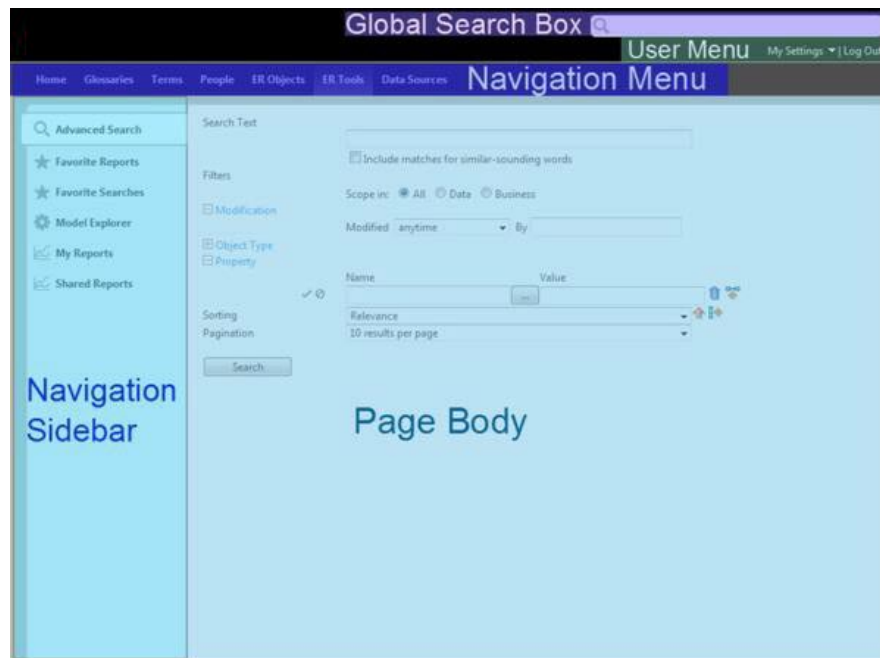
- Add, modify, and delete resource details are logged.
- Users can post comments on resources or to other users.

See also

- [Install and configure Team Server and Repository](#)

Overview of the user interface

The **Team Server** user interface consists of the following elements:



- [Global Search Box](#). Lets you search for any resource in the [Reporting Repository](#).
- [User Menu](#). Provides access to user features and settings.
- [Navigation Menu](#). Provides access to the main Team Server features.
- **Navigation Sidebar**. Lets you switch between the different pages of a major section n. It changes depending on the current section.
- **Page Body**. Shows the content of the current page.
- In the **Navigation Menu**, we have eight tabs available:
 - [Home](#). Your personal home page, including documentation links, getting started content videos and your Stream page that shows your activity and the activity of the resources that you are following.
 - [Glossaries](#). The Glossaries page is a search page that allows you to search for glossaries, edit, or create new glossaries.
 - [Terms](#). The Terms page is a search page that allows you to search for terms, edit, or create new terms.
 - [People](#). The People page is a search page that allows you to search, edit, or create new users.
 - [ER Objects](#). The ER Objects page is a search page that allows you to search for ER objects.
 - [ER Tools](#). Allows you to navigate to the business and technical reports, and create custom reports. From here you can also access your favorite and shared searches and reports.
 - [Data Sources](#). The Data Sources page is a search page that allows you to create or search for data sources, login credentials and data sources groups.

See also

- [User Guide](#)

Installation notes

These notes provide important information about installation requirements for new **Team Server** installer which includes **Repository**. You should read this document in its entirety before any [install](#) or [uninstall](#) procedure.

Note: The following information is for installation only. If you are upgrading from separate ER/Studio Repository and Team Server installations, please see [Upgrading Team Server and Repository](#) for important upgrade information.

System Requirements

Before installing **Team Server** and **Repository**, verify that your environment meets the hardware and operating system requirements. Adhering to these requirements optimizes performance. These hardware requirements are based on a 5-10 user environment.

Tip: For more than 10 users, ensure your hardware surpasses the previously stated hardware requirements to accommodate the number of transactions that increase as the number of users increases.

WARNING: If you are installing the x64 version of our software, you must uninstall any previously installed x32 bit versions.

Minimum requirements

Hardware	Application Server	Notes
Processor	As required by your database platform	4 x 3.0 Ghz 8 x 3.0 Ghz recommended
RAM		6 GB 8 GB recommended
Disk Space		5 GB + 100mb per Team Server diagram + additional DB growth if DB is in the same server
Operating System		Any of the following: <ul style="list-style-type: none"> Windows Server 2008 64-bit Windows Server 2012 64-bit
Software	Transaction Control Protocol (TCP) up and running Single-byte character sets are supported as long as the database is set to the required code page (character set). UNICODE and UTF8 are not supported.	TCP up and running
Privileges	DBMS privileges to create objects on the server Local administrator privileges	

Note: To provide a great user experience, the following minimum configuration is strongly recommended for Team Server.

Additional notes

- In you install the Application and the Database on the same server, consider surpassing the hardware requirements described previously.
- Supported DBMS (See [Database Server Requirements](#)).
- Should you be running the minimum spec requirements, it is advised to reduce the maxThreads to a single thread. To do this, edit `Ötomcat>webapps>api>WEB-INF>ersportal-app.xml` and change the line `<property name=“maxThreads” value=“2” />` to have a value of `“1”`. A restart is required after saving the change.

Supported web browsers

The following web browsers are tested to work with Team Server. Other browsers may work, but are not officially supported:

- Mozilla Firefox
- Google Chrome
- Microsoft Internet Explorer 9.0 or later
- Microsoft Edge

Note: To be able to launch the [configurator](#) within Microsoft Edge, follow the next steps:

1. Open the Control Panel > Internet Options dialog.
2. Go to the Security tab.
3. Select “Local intranet” zone, and then click Sites.
4. Check the “Automatically detect intranet network” box.

Encrypting / SSL enablement requirements

Team Server supports encrypting connections to SQL Server (SSL enabled) with the following environment:

- Windows Server 2008 R2, Microsoft SQL Server 2014 SP1 (with [Cumulative Update 7](#) installed)
- Windows Server 2008 R2, Microsoft SQL Server 2012 SP2 (with [Cumulative Update 6](#) installed)

Installation checklist

- The installation user account must have local administrative privileges.
- To install, you need to create first an empty database for Team Server, unless you already have a database and will be reinitializing it during the install.
- The database server to be used must be running.
- If you want to configure LDAP user authentication to allow directory service users to log into **Team Server**, check that your LDAP server is up and running.
- If you want to enable Team Server email notifications, check that your STMP server is up and running. You may want to prepare a special email address on your email server for this purpose.

Conflicts

- Do not install **Team Server** (that includes **Repository**) on a system where **ER/Studio Data Architect** or **ER/Studio Business Architect** is installed.
- If a previous version of **Team Server** is installed, please uninstall first.
- If the **Team Server** installer detects an installation of any of these applications, the installer asks you to uninstall these applications before you proceed.

See also

- [Install and configure Team Server and Repository](#)
- [Database server requirements](#)
- [Upgrading Team Server and Repository](#)

Database server requirements

Supported database platforms

Team Server and **Repository** databases may run on any of the following database platforms:

- Microsoft SQL Server 2008 to 2016.
- Oracle 11g and 12c.
- IBM DB2 for iSeries V4R5 and V5R2.
- IBM DB2 for LUW 5.x - 10.x.
- IBM DB2 for z/OS 5.x - 11.x.

In order for the **Repository** to communicate with the database, the machine running **Team Server** must also have the corresponding RDBMS client utility installed.

Important information

Oracle

- Install the 64-bit version of Oracle Client Utilities.
- Configure your server in one of the Oracle configuration tools: Net Easy Config or Net Configuration Assistant.
- Create a connection alias.
- If you are upgrading using Oracle you need to increase the number of processes (connections) to 200 before running.
- Minimum permissions for owner of Repository and Team Server schema:
 - Roles:
SELECT_CATALOG_ROLE
 - Privileges:
CREATE INDEXTYPE
CREATE PROCEDURE
CREATE SEQUENCE

CREATE SESSION
CREATE SYNONYM
CREATE TABLE
CREATE TRIGGER
CREATE TYPE
CREATE VIEW
UNLIMITED TABLESPACE

Microsoft SQL Server

- 64-bit client libraries are already installed on Windows machines.
- Ensure that the database and the instance are set to case-insensitive, as case-sensitive is not supported. Also set the SQL Server Configuration Properties to allow SQL Server authentication. Team Server only supports SQL Server Authentication.
- When using SQL Server, ensure the SQL Server Agent is running.
- **Team Server** on SQL Server only supports the following communication protocols:
 - Shared Memory
 - TCP/IP
 - Named Pipes
- The option **ANSI_NULLS** (Server Properties > Connections) needs to be set as **On**.
- The default schema for Team Server database needs to be **dbo**. If you were using a different schema please move the tables to **dbo** schema previous to [install](#) or [upgrade Team Server](#).

IBM DB2

- Install 64-bit version of IBM DB2 UDB Client Utilities.
- Configure an ODBC data source entry for the IBM DB2 database that you want to access from Team Server.
- Create a connection alias. The data source name must match the connection alias specified in the client connection.
- For all versions of an IBM DB2 UDB server, to ensure optimal Repository performance, you must have a user temporary tablespace with a 32 KB page size and the database must be tuned so it does not run out of memory or log space.

Install and Configure Team Server and Repository

Please ensure that you have read the [Installation Notes](#) before proceeding.



Note: Repository 2016+ installation is now part of **Team Server 2016+** installation.

To install Team Server and Repository, you need to run the new installer and follow the steps. You need a user with administrative privileges to run the installation wizard.

In this page, you can find detailed information about the different steps of the installation wizard.



Tip: You may have to create a blank database before starting the installation, please check the [Installation Checklist](#).

1. Run the installation wizard. Select **I agree...** and click **Install**.



Note: In case you need to change the default **Port** or the **Install location**, please click **Options** previous to **Install**.

2. In the Configurator Welcome Page, use Admin/Admin (case-sensitive) as the login and password and click *Login* to start the configuration wizard.

Welcome to the Configurator

Username
Admin

Password

Remember me

First time installing Team Server, the default login is Admin/Admin to get started.

3. In the **Repository** page, click on **Select DBMS** to start the Database configuration.

Repository Setup

Please, select a supported DBMS to setup repository.

4. In the **Repository Setup** page, you need to specify the information to connect to your Repository database:
 - a. Select the DBMS type.

b. Complete the information about the Repository database:



Note: If you have installed Team Server, CONNECT, or Portal in the past, please see [Upgrading Team Server and Repository](#).

- i. In the **Host Name:Port** field, enter the hostname of the machine that contains the Repository database. The port number appears by default. Change it if needed.
- ii. In the **Login** field, enter the username to access the Repository database.
- iii. In the **Password** field, enter the password for the user specified earlier.
- iv. On the **Database** field, enter the name of the database that you have previously created to be your Repository database.
- v. Login credentials to be used by Team Server to interact with the database (case-sensitive).

Additional Notes: Depending on the database platform that you selected previously, complete the following fields:

If you selected **Oracle**:

- On the **SID** field, enter your database identifier.
- If you selected **Use Oracle Service Name**, the **SID** field will be **Oracle Service Name**. Enter the service name you use.

If you selected Microsoft SQL Server:

- If the database server is a named instance, specify the **Host Name** in the HostName\NamedInstanceName format. For example, DEWKBOW01\DBServer.
- Optionally, for Microsoft SQL Server 2012, 2014, and 2016 only, you can check **Use SSL** to enable the Secure Sockets Layer (SSL) communication protocol, which encrypts messages. When SSL is enabled, Team Server uses ports 80 and 443 for secure communications. Please check [SSL enablement requirements](#).
- It is possible to have the installer create your MSSQL database for you at this point. If you enter the name of a non-existent database, the installer will pop up a confirmation window and then create the database.

c. Click **Next** to continue.

Repository

Accounts

License

HTTPS

Single Sign-On

Notification

Repository Setup

Please select the DBMS type you would like to use for Team Server repository

Oracle 11g-12c
 MS SQL Server 2008-2016
 IBM UDB 9.x-11.x (DB2 will not work with Performance IQ, choose either SQL Server or Oracle to host repository)

[Read about configuring ER/Studio Repository database >](#)

Repository DB

If you have installed Team Server, CONNECT or Portal in the past,

Specify location of Team Server database if it exists

Host Name	Port
SUPESW2012R202	:1433

Use SSL

Authentication, create database privilege required

Login

sa

Password

Database

TS_2016

Use existing tables or create them if they do not exist
 Overwrite existing tables or create them if they do not exist
 Specify Login credentials to be used by Team Server to interact with database

Team Server will restart after repository is created, you may be asked to log in again before you can continue.

Repository Setup

Please select the DBMS type you would like to use for Team Server repository

Oracle 11g-12c
 MS SQL Server 2008-2016
 IBM UDB 9.x-11.x (DB2 will not work with Performance IQ, choose either SQL Server or Oracle to host repository)

[Read about configuring ER/Studio Repository database >](#)

Repository DB

If you have installed Team Server, CONNECT or Portal in the past,

Specify location of Team Server database if it exists

Host Name	Port
eslabertsRepo03	: 50000

Authentication, create database privilege required

Login

db2admin

Password

Database

PORTAL

Use existing tables or create them if they do not exist
 Overwrite existing tables or create them if they do not exist
 Specify Login credentials to be used by Team Server to interact with database

Team Server will restart after repository is created, you may be asked to log in again before you can continue.



Note: If you want to just install the Repository, exit the configurator at this point and [stop](#) the Tomcat service (Team Server).

5. In the **Accounts** page:
 - a. In the **Windows User** field, enter the name of a Windows user that Team Server can use to log into the system. The user account must have local administrative privileges. The name should be in the format "machine_name\username".
 - b. In the **Password** field, enter the password of the Windows user.
 - c. Login credentials to be used by Team Server to interact with repository (case-sensitive):
 - Leave it in blank to keep using Admin/Admin to log into ER/Studio Repository.
 - If you want to modify the super user login to enter into ER/Studio Repository, introduce the information. If the login does not exist, it will be created.

- d. Click **Next** to continue.

6. In the **License** page, you can register your licenses.
 - a. In the **EDN Login or Email Address** field enter your existing Developer Network account. If you need a new user account, click **Create Account**. Fill in the required information.

- b. In the **Password** field, enter your EDN password.
- c. Specify the serial number to register in the **Serial Number** field.
- d. Click **Next**.



Note: If you have a license file, please use the **Import from file** button to register.

7. In the **HTTPS Setup** page, you can optionally choose to enable HTTPS (SSL). It is recommended that you enable secure communications as this will keep your password transmissions secure.
 - a. Optionally, select **Enable Secure Communication (HTTPS)** to enable it.
 - b. If you do not have SSL set up on your server, you can click the **Self-Signed** button to walk you through the short wizard that will create a Keystore file allowing you to use encryption.
 - Fill out the fields of the *Self-Signed wizard* and click **Generate**. The Keystore file will be created in the location of your choosing.

- c. If you already have SSL set up on your server, directly enter the information required.
- d. Click **Next**.

8. In the **Single Sign-On via LDAP** page, optionally, check **Use LDAP server for authentication** to use the *Lightweight Directory Access Protocol* (LDAP) and enable the ability for users to [log into Team Server](#) using their domain username and password. You can [enable LDAP authentication anytime later](#):
 - a. In the **LDAP URL** field, enter the URL of the server running LDAP.
 - b. In the **Manager DN** field, enter the distinguished name for the user that is used to authenticate users. Team Server uses this to connect to the LDAP server and validate user credentials. For example, CN=administrator,CN=Users,DC=mydomain,DC=com.

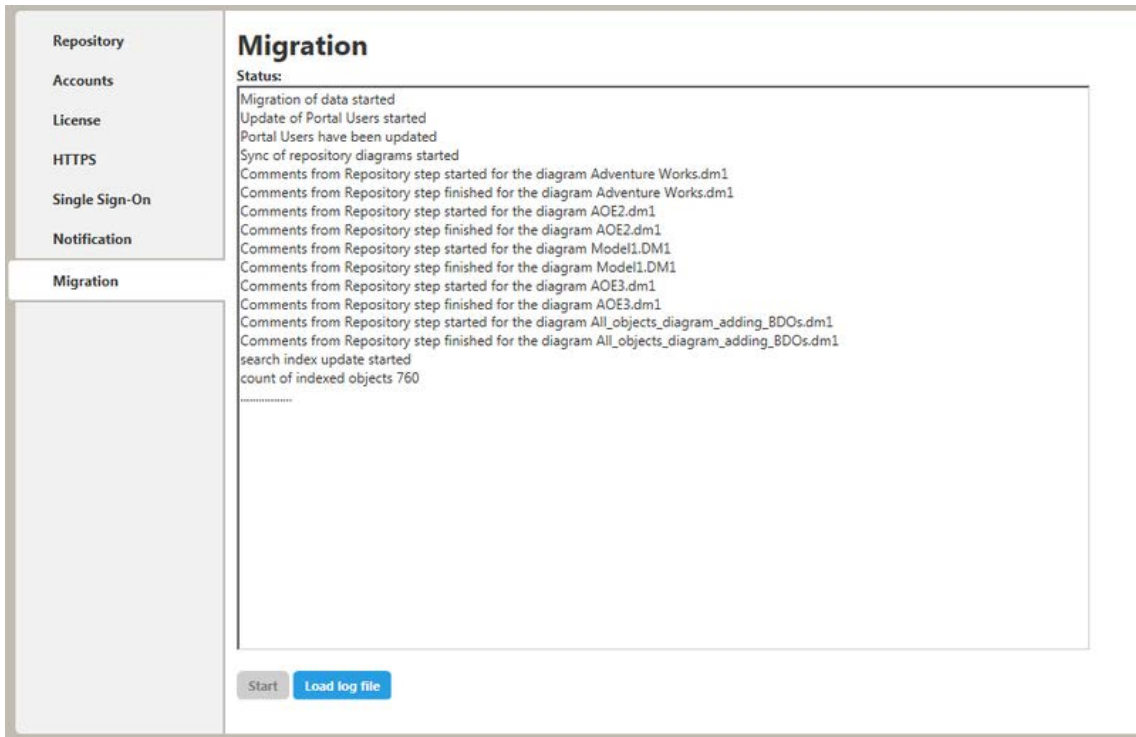


Note: In this example, administrator has been used. In which case, **Users** is defined as a container rather than an organizational unit as is the Microsoft Active Directory default. Your user accounts may be in an organizational unit; in this case, you would specify it differently, for example, CN=user1,OU=sales,DC=mydomain,DC=com.

- c. In the **Manager Password** field, enter the password for the administrative user.
- d. In the **Search Base DN** field, enter the name of the root node in LDAP from which to search for users. For example, CN=Users,DC=mydomain,DC=com.
- e. In the **Search Attribute** field, enter the attribute in LDAP holding the user's login name. For example, sAMAccountName (for ActiveDirectory).
- f. In the **Test User/Password** field, enter the username and password of a sample user to attempt to authenticate against the LDAP server. The installer uses this information to validate the given LDAP information before moving to the next page.
- g. Click **Test Connection**. If it is ok, this will enable the **Next** button.
- h. Click **Next**.

9. In the **Notification Enablement** page, optionally, check **Enable Email Notifications via SMTP** to allow users to send search results and reports by email directly from Team Server. You can [enable notifications anytime later](#):
 - a. In the **Email Address** field, enter the email address that you want to use as the sender of the emails sent from Team Server. You may want to prepare a special email address on your email server for this purpose.
 - b. In the **Server/Port** field, enter the host name of the email server (for example, "mail"), the fully qualified network name (for example: "mail.example.com"), or the IP address (for example: "10.10.23.250") and the port number where the email server is listening. The default port is 25.
 - c. Optionally, check "Requires Authentication" if your email server requires authentication. When you check this option, the **User Name** and **Password** fields are highlighted. Fill them with the required values to authenticate Team Server against your SMTP server.
 - d. Click **Next**.

10. In the **Migration** page, you perform the data migration during an upgrade. Click the **Start** button for this purpose. You can load or save the log file generated by clicking **Load log file**.



Note: Please note that the configurator will show the **Migration** tab only if you are upgrading. **Team Server** and **Repository** are now installed and configured on your system.

Modify Configuration

You can modify the configuration at any moment:

- Use Configure Team Server. From Windows: Start > All Programs > Team Server 16.5 > Configure Team Server.
- Select **My Setting > Configurator** once you are logged as Admin in Team Server.

Upgrading Team Server and Repository

This **Upgrade Guide** provides important information regarding the process of upgrading from previous versions using the new **Team Server** installer which includes **Repository**.



Note: Please note that with this new installer, **Repository** and **Team Server** will be installed on the same server machine. If in your current installation they are on separate machines, be sure to uninstall both before upgrading. Run the upgrade on the machine that was previously running **Team Server**.

Preparing the Upgrade

Repository User Preparations

1. Ensure you have backed up all your .dm1 files.
2. Check in all your diagrams and objects. If you try to check in a file from the previous version with the same name as a current file, the current file will become corrupted.

3. Rename all local copies of Repository diagrams in the active file directory as follows:
 - a. Choose Repository > Options.
 - b. Make note of the Active File Directory.
 - c. Switch to the Windows Explorer and rename all the diagrams in the Active File Directory in order to protect them of being overwritten. Example:
Backup_DiagramName.dm1.

Repository Administrator Preparations

1. Ensure no one is logged into the Repository.
2. Backup the current Repository database.



Note: If you are upgrading from a Repository version prior to 4.0, you can delete the `C:\Program Files\Embarcadero\Repository\Data` directory. This directory is not used with Repository versions 4.0 and later.

Upgrading from Team Server 4.0.x, CONNECT 3.0.x or ER/Studio Portal 2.0.x

Make a copy of the license files, for example: `license.txt`, `ao_12345678.txt` or `.slip` until the upgrade has completed. Then copy to the `license` folder in the installation directory of the new Team Server installation folder.

Depending on your installation location, you can find the license file in the program directory. For example: `C:\Embarcadero\ERStudio Portal 2.0\license`

- If you have already used the uninstaller, you may also have a license backup in the following location:
 - 32-bit Windows: `C:\Program Files (x86)\Common Files\ersEnterprisePortalBackup\license`
 - 64-bit Windows: `C:\Program Files\Common Files\ersEnterprisePortalBackup\license`

After copying over the `license.txt` file to the `license` folder within the installation folder of Team Server, [log into Team Server](#) as Admin, select **My Settings > Admin > Licenses** and click **Refresh** for Team Server to recognize your licenses.



Note: We always recommend backing up your data before starting the process. You may have to back up your database and, for **Team Server** and **Connect**, export your [Glossaries](#) and [Terms](#).

[Uninstall](#) the previous version.

Upgrades scenarios

First of all, [prepare](#) the upgrade for any scenario.

Upgrades from Team Server 2016 (16.X) which includes Repository 7.0.1

1. Uninstall Team Server 2016 (16.X).
2. Install Team Server 2016+ (16.5).

Upgrades from Repository 7.0.X (Standalone)

1. Uninstall Repository 7.0.X.

2. Install Team Server 2016+ (16.5).
3. On the [repository setup](#) page, if you were also using **Team Server 4.0** or previous, select **Specify location for Team Server database...**, this will expand the information fields to the ones explained [here](#).

Upgrades from Repository prior to 6.5/6.6/6.7 (Standalone) and Team Server 4.0 or previous

1. The Repository upgrade must be done incrementally from one major version to the next until the target version is reached. You cannot skip major versions during the Repository upgrade as the installer for each major version only contains the database changes between the new version and the previous one.
 - o For example: When upgrading from earlier versions, such as from 5.5, you must first upgrade the Repository to version 6.0 using the repository 6.0 installer, uninstall version 6.0, then upgrade to 6.7 using the Repository 6.7 installer then, uninstall and install 7.0.1. Each time you install a major version it will update the database.
2. Install Team Server 2016+ (16.5).
3. On the [repository setup](#) page, if you were also using **Team Server 4.0** or previous, select **Specify location for Team Server database...**, this will expand the information fields to the ones explained [here](#).

Upgrade Configuration

- If you are upgrading from **Team Server 2016** (16.x) you already have one unique combined database, directly follow the steps on the [repository setup](#).
- If you have installed Team Server XE7 or any previous version, including CONNECT or Portal you need to specify the information to connect to its database. The new installer will copy the Team Server database tables into the Repository database, after which both Repository and Team Server Web will share the same database. Please, read first [Database Server Requirements](#).
 1. Check the [repository setup](#) and introduce repository database information.
 2. Select **Specify location for Team Server database...**, this will expand the information fields to include Team Server database information.
 3. Fill the fields with the Team Server database information with the same structure than you have introduced previously for repository database.

[Read about configuring ER/Studio Repository database »](#)

Repository DB
If you have installed Team Server, CONNECT or Portal in the past,
 Specify location of Team Server database if it exists

Host Name:Port
ESVMLAURAM01W7X\SQLEXPRESS 1433

Use SSL

Authentication, create database privilege required
Login
sa

Password
.....

Database
Combined

Use existing tables or create them if they do not exist
 Overwrite existing tables or create them if they do not exist

Login credentials to be used by Team Server to interact with database

- If login does not exist it will be created
- Leave blank to use database admin

Report DB
If you originally installed Portal with a separate Solution database,
 Specify location of Solution database if it exists
Team Server database will be merged into Model Repository, after which it can be removed.

Host Name:Port
ESVMLAURAM01W7X\SQLEXPRESS 1433

Use SSL

Authentication, create database privilege required
Login
sa

Password
.....

Database
TeamServer403

4. If your Portal installation was using a separate Solution database, select **Specify the location of Solution database....**
5. Specify Portal Solution database details so the tables can also be copied to the Repository database.

[Read about configuring ER/Studio Repository database »](#)

Repository DB
If you have installed Team Server, CONNECT or Portal in the past,
 Specify location of Team Server database if it exists

Host Name:Port
ESVMLAURAM01W7X\SQLEXPRESS 1433

Use SSL

Authentication, create database privilege required
Login
sa

Password
.....

Database
Combined

Use existing tables or create them if they do not exist
 Overwrite existing tables or create them if they do not exist

Login credentials to be used by Team Server to interact with database

- If login does not exist it will be created
- Leave blank to use database admin

Report DB
If you originally installed Portal with a separate Solution database,
 Specify location of Solution database if it exists
Team Server database will be merged into Model Repository, after which it can be removed.

Host Name:Port
ESVMLAURAM01W7X\SQLEXPRESS 1433

Use SSL

Authentication, create database privilege required
Login
sa

Password
.....

Database
RepDB

Solution DB
Host Name:Port
ESVMLAURAM01W7X\SQLEXPRESS 1433

Use SSL

Authentication, create database privilege required
Login
sa

Password
.....

Database
SolDB

Note for Oracle: Once the upgrade is done, the alias in the tnsnames file must be updated to point the new database server in case you had Team Server and Repository old databases in different machines.

Note for DB2: Once the upgrade is done, create a System DSN with the ODBC Data Source Administrator to point the new database server in case you had Team Server and Repository old

databases in different machines.

Finishing the Upgrade

1. Perform the [migration](#) process.
2. [Update the search index](#).
3. [Update reports](#).
4. Click Update Solution Repository in My Settings > Admin > [Repository Management](#).



Note: Wait until a message of successful update appears.

5. Once the **Team Server** upgrade is complete, you should upgrade your diagrams with the latest version of **ER/Studio Data Architect**.

Important Notes

- Always back up databases before upgrading.
- Upgrading diagrams can be time consuming and memory intensive. The number and size of the diagrams managed in the upgrade dictates how long the upgrade process takes.
- Regardless of the process that you must follow to back up your licenses, which depends on the previous version that you are upgrading from and other factors, after you restore your licenses in your new installation, you must [log in](#) as a [super user](#) and use the [Manage Users](#) page to assign different types of available licenses to your users.

Overview of user connections

Team Server supports the following types of user connection:

Base - Admin Connection

This [social super user](#) connection comes for free with **Team Server** so that you can [connect to Team Server](#) and [configure your Team Server licenses](#).

By default, you can [log in to Team Server](#) with this account using the credentials of your **Admin** account from ER/Studio Repository.

This user connection provides [social user access](#).

ERSTeamServer - Team Server User Connection

This is the standard Team Server license. Users with a Team Server user connection can connect to Team Server and access all features.

This connection provides [social user access](#).



Note: [LDAP users](#) can only use this type of connection.

TeamServer - Basic Connection

This basic unlimited connection comes for free with **Team Server**. The [basic navigation menu](#) will be

available.

Concurrent User Connection

Deprecated but still supported. This is a license for the older Portal product.

This connection provides [non-social user access](#).

Exclusive User Connection

Deprecated but still supported. This is a license for the older Portal product.

This connection provides [non-social user access](#).

Manage licenses

To manage your licenses go to [My Settings > Admin > Licenses](#)

The Licenses Administration page is divided in three different parts:

1. License Add-on Status table indicates how many user connections are allowed and the license type.
2. Three action links:
 - o **Refresh**: Updates the Add-on Licenses status by reading the licenses files from the specific folder.
 - o **Register Add-on License**: Opens the [License](#) page where you can register your licenses.
 - o **Manage Users**: Opens the user connection administration page where the administrator can allocate licenses to ER/Studio Enterprise users, up to the maximum number shown in the License Add-on Status.
3. Current User Sessions table lists the users that are currently using the application. This table also shows the remote host id, remote IP address, the date and time when the user logged in, and how long the user has been inactive. The Connection Type column display depends on the license type the user is using for this connection. The Action column in this section allows the administrator to log off (disconnect) users. The current user cannot disconnect himself.

Uninstalling Team Server

To remove an [installation of Team Server and Repository](#):

1. Select Start > Programs > Team Server X.X > Uninstall Team Server to start the uninstallation wizard.
2. On the **Welcome** page, click **Next**.
3. On the **Summary Information** page, review the information and click **Uninstall**.
4. Once the uninstallation process is completed, click **Finish** to close the uninstallation wizard.
5. After you close the uninstallation wizard, you are given the choice to reboot immediately or at a later time. For a complete uninstallation, a system reboot may be required. Make your selection and click **Finish**.

Notes:

- The Team Server uninstaller does not uninstall the [Team Server Reporting Repository database](#). It is the Database Administrator's responsibility to delete the Reporting Repository database if you decide to permanently delete Team Server.
- When Team Server is uninstalled, the backup folder remains in the disk. In case you are uninstalling Team Server with no plans to install it again, remember you can delete this folder manually. You may find backup folder in the following location:
 - Team Server 4.0.8 and previous versions: C:\Program Files (x86)\Common Files\ersEnterprisePortalBackup
 - Team Server 4.1: C:\Program Files\Common Files\ersEnterprisePortalBackup
 - Team Server 2016: C:\Users\username\AppData\Local\Temp\ersEnterprisePortalBackup (Please see [known issue](#) about backing up 16.0.0 version.)

Tutorials

These short tutorials are designed to give you a quick introduction to some common tasks that you might want to perform with **Team Server**.

Choose a topic to work with:

- [Connect and Publish on Team Server](#)
- [View/Follow/Relate Objects](#)
- [Add Users](#)
- [Add a Glossary](#)
- [Import Glossaries and Terms](#)
- [Add Custom Attributes](#)
- [Auditing the Usage of Login Credentials by other Product](#)
- [Receiving Notifications](#)

Connect and publish on Team Server

Team Server now includes **Repository** and has automatized the synchronization process.

In addition you will need to have **ER Studio Data Architect** installed to synchronize your models. To better understand the structure required, read the [overview of the ER/Studio Team Server architecture](#).

Connect ER/Studio Repository with ER/Studio Data Architect

1. Start ER/Studio Data Architect. Click **Repository > Options** to configure the connection with **Repository**. Enter the required details and click **Ok**.



Note: In *Server Machine* box, enter the name of the Server where you have **Team Server** installed. For example, *MyServer01*.

2. On the **Repository** menu, click **Log In** to connect with the repository. Users to connect with **Team Server** need to be [created](#) previously.

Add a Diagram to ER/Studio Repository

1. Open or create a new model in **ER/Studio Data Architect**. There are many sample models shipped with **ER Studio Data Architect**. If you do not have a current set of working data, you can open one of these from the templates folder.



Note: The default path to these models is
C:\ProgramData\IDERA\ERStudioDA_16.5\Sample Models .

2. Click Repository > Diagrams > Add Diagram.

Alternatively, from the navigation window on the left of the **ER/Studio Data Architect** interface, right-click the diagram and then click **Add Diagram**.

- o This will open the **Add Diagram to ER/Studio Repository** options window.
3. Click **OK** to synchronize the diagram with the Repository server.



Note: If you want to use these templates for other tutorials, you may want to *save as* a different filename before proceeding.

Your model is now stored on the **Repository** database. To view the data on **Team Server**, complete the next section to publish the diagram on your Team Server installation.

Publish a Diagram on Team Server

1. Open in a web browser the URL that you specified in your **Team Server** installation. For example, <http://localhost:8080>.
2. Log in as Admin with the password you specified upon installation.



Note: The default password is Admin if you have not changed the default super user of your Repository installation.

3. Click My Settings > Admin > [ER/Studio Publications](#).
4. On the **ER/Studio Publications** page, select those resources that you want to publish in the **Selection** column.
5. Click **Publish Selected** to start the publication process. The **Status** column will show **Published** when the publication process ends successfully.

View / follow / relate objects

If you have not [added and published](#) a model on **Team Server**, you will need to do that first.

View Objects

Select ER Tools > [Model Explorer](#).

Browse the hierarchy of ER objects from the Model Explorer page. In this hierarchy, expand every folder and ER object to see its contents. At this point you can:

- Hover over certain ER objects, such as diagrams, to view detailed information about the ER object.
- Hover over the name of an ER object with an eye icon, such as a model or a submodel, to view a miniature picture of the ER object (clicking the icon shows the complete diagram in a new window/tab).

- Click an ER object to access its [description page](#), which contains links that you can use to continue browsing your ER objects.

Follow Objects

Open the description page of an ER Object. Click **+ Follow** on the upper-right corner of the resource page header. If this object has child objects, click *Yes* to follow all levels of child objects beneath this object.

You are now following the resource, and its activity is displayed in your [Home page](#).

Relate Objects

Certain ER/objects such as models, can be related with [terms](#) and with [data sources](#). You can:

- Click [Related Terms](#) and then go to relate tab. On the right-hand side of the term entries, you can click **Relate** to relate a term to the current model.
- Click [Related Data Sources](#) and then go to relate tab. On the right-hand side of the data sources entries, you can click **Relate** to relate a data source to the current model.

Add users

You have the following options to add users to Team Server:

- You can directly [create](#) users within the tool. But the users you create with this tool will be just Team Server exclusive users, not being able to connect to Repository.
- Use the **ER Studio Data Architect Security Center** to add and remove users, groups, or roles. This gives you many options to allow different Users and Groups, varying levels of access to your Repository Projects, Diagrams, and Diagram objects.

Add users using Security Center

1. Start ER/Studio Data Architect.
2. On the **Repository** menu, point to **Security** and then click **Security Center**.
3. To add a user, go to **Manage Users** tab on the **ER/Studio Repository Security Center** window and click the "New" button. Include user name, password, and description on the pop-up window, then click **Ok**.
4. Now you have this user created in the Repository database and can log in with it.

Notes:

- For LDAP users, select **Directory Service User** check box and include the user name as Domain\Username.
- For LDAP users, you need to [enable LDAP](#) on Team Server prior to synchronizing.
- User/Role security center changes are not synchronized separately. They need to be synchronized with diagram/model changes.

Add a glossary

Glossaries are collections of terms, such as "Human Resources", "Accounting", or "Customer Service". Glossaries can contain many [terms](#), and each term can be associated with many glossaries.

Open in a web browser the URL that you specified in your **Team Server** installation and log in.



Note: Your user needs to have permission to view and create glossaries. Administrator can manage this permission on the [Permissions](#) page.

From the top navigation bar, select **Glossaries**, and then click **New Glossary** on the top right of the page.

In the **New Glossary** dialog box that opens:

1. Enter a **Name** to identify your new glossary.
2. Write in **Parent Glossary** the name of an existing glossary if you want your new glossary to be a child of an existing glossary. Click **Add** to set the parent.
3. Define the **Status** of the glossary using nomenclature you decide upon. You can use for example the following nomenclature: "Approved", "Not Yet Approved", "Implemented", "Not Yet Implemented", or "Deprecated".
4. Write a **Definition** that provides detailed information about the glossary, such as its purpose and audience.
5. Click **Save** to save your new glossary.

Import glossaries and terms

Creating a term is very much like creating a [new glossary](#). However, you can import a large number of Terms using the Import function.

You can load [glossaries](#) and [terms](#) from a CSV file into **Team Server** if you have a CSV file that follows the [required format](#).

To load glossaries and terms from a CSV file:

1. Select [Glossaries](#) on the [navigation menu](#).
2. Click **Load Glossaries** on the upper-right corner of the **Glossaries** page.
3. On the [Load CSV File](#) page that opens:
 - a. Click **Browse** and choose the target CSV file.
 - b. Click **Load**.

Team Server loads the glossaries and terms on the CSV file.

If you do not have a CSV file ready, you can create it. Paste the following into a simple text file and save as a .csv file. For example, Terms.csv.

```
+++ Glossaries Begin +++  
  
Key,Name,Status,Definition,Abbreviations,Aliases,AdditionalNotes,Stewards,ParentGlossary,,,,,,,,  
,"My Company Business Glossary",Approved,"Glossary of all commonly used terms used for conducting business at My Company.",,,,,admin,,,,,,,,  
,"Accounting",Approve,"Glossary of commonly used accounting terms.",,,,,admin,"My Company Business Glossary",,,,,,,,,  
,"Customer Service",,"Glossary of commonly used customer service terms.",,,,,admin,"My Company Business Glossary",,,,,,,,,  
,"Human Resources",,"Glossary of commonly used human resources terms.",,,,,admin,"My Company Business Glossary",,,,,,,,,
```

```

+++ Glossaries End +++
+++ Terms Begin +++
Key,Name,Status,Definition,Abbreviations,Aliases,AdditionalNotes,Stewar
ds,RelatedGlossaries,RelatedTerms,TermEntityType
,AMT,Approved,"Tax imposed to back up the regular income tax imposed on
CORPORATION and individuals to assure that taxpayers with economically
measured income exceeding certain thresholds pay at least some income
tax.",,,,,admin,Accounting,,
,Abatement,Approved,"Complete removal of an amount due, (usually
referring to a tax ABATEMENT a penalty abatement or an INTEREST
abatement within a governing agency).",,,,,admin,Accounting,AMT,
+++ Terms End +++

```

Add custom attributes

You can associate enterprise data dictionary attachments with the following **Team Server** resource types: glossaries, terms, people, data sources, and the following ER objects: tables, columns, logical entities, logical attributes, business entities and business attributes.

When you associate an attachment to a resource type, the Description subpage of the pages of that type of resource include the associated attachment as a custom attribute which you can edit from **Team Server**.

Add Attachments on ER/Studio Data Architect

In the Data Dictionary, right-click the Attachments folder and then click **New Attachment Type**. Define the attachment type as required and then click **OK** to complete the editor.

In the Attachment type folder created, right-click and then click **New Attachment**.

1. In the **Name** tab define the name of the attachment type and provide a description (optional) of the attachment type, such as when and why attachments of this type are used.
2. In the **Value** tab select the data type from the lists all supported data types. Optionally, you can define a default value.

Add Diagram Changes and Synchronise

You can either:

- [Adding a Diagram or Data Dictionary to the Repository](#).
- If the diagram already exist and you are just adding the attachments, right-click de Data Dictionary and then click **Check In Data Dictionary**.

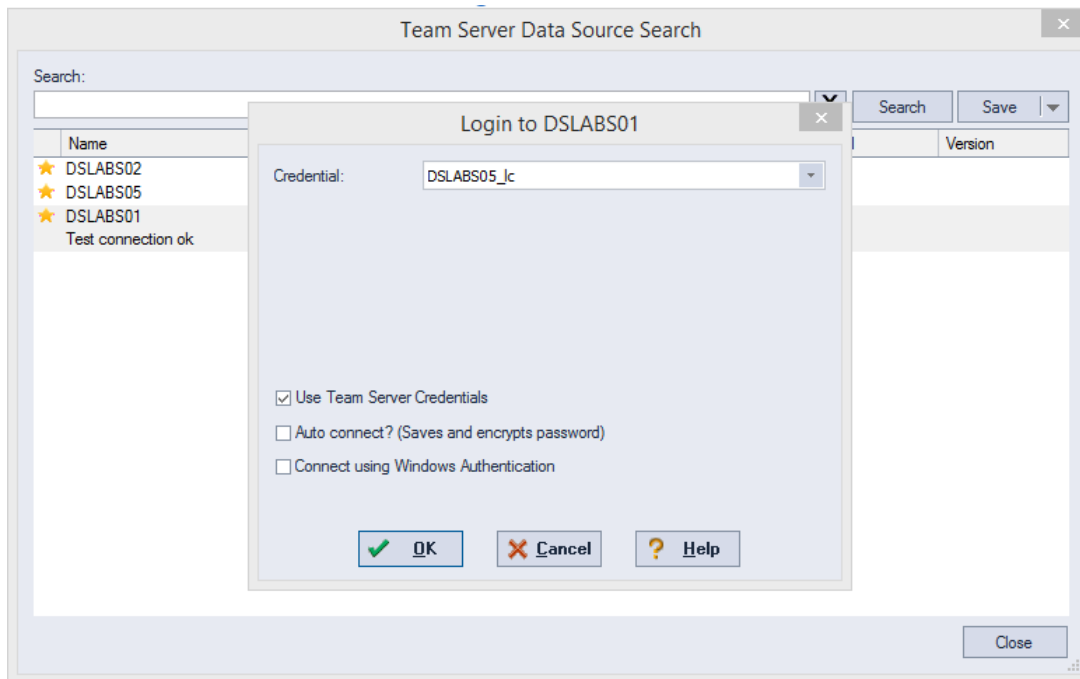
Publish and Add the Custom Attributes

Go to **Team Server** and [publish](#) the diagram.

Then [add the custom attribute](#) to the specific attribute type. For example: [Terms](#).

Add terms with custom attributes

You can either:



Auditing the Usage

Now if you go to the [Password Locker Audit](#) page on **Team Server** you can audit what login credentials are being used. You can filter by product, login credential, and date.

Password Locker Audit

Use this page to audit every connection to Password Lockers

Application: All Login Credentials: All From: 2015/10/22 To: 2015/10/30 Search

Application	User Name	Login Credentials	Date
DBArtisan	admin	DSLABS05_lc	2015-10-29 16:24:56
DBArtisan	admin	saDS	2015-10-29 14:30:07

Receiving notifications

Team Server allows you to receive notifications about the activity in your stream. Posting, comments, following on the resources you have created will generate and email that will be sent to the account you defined on your profile.

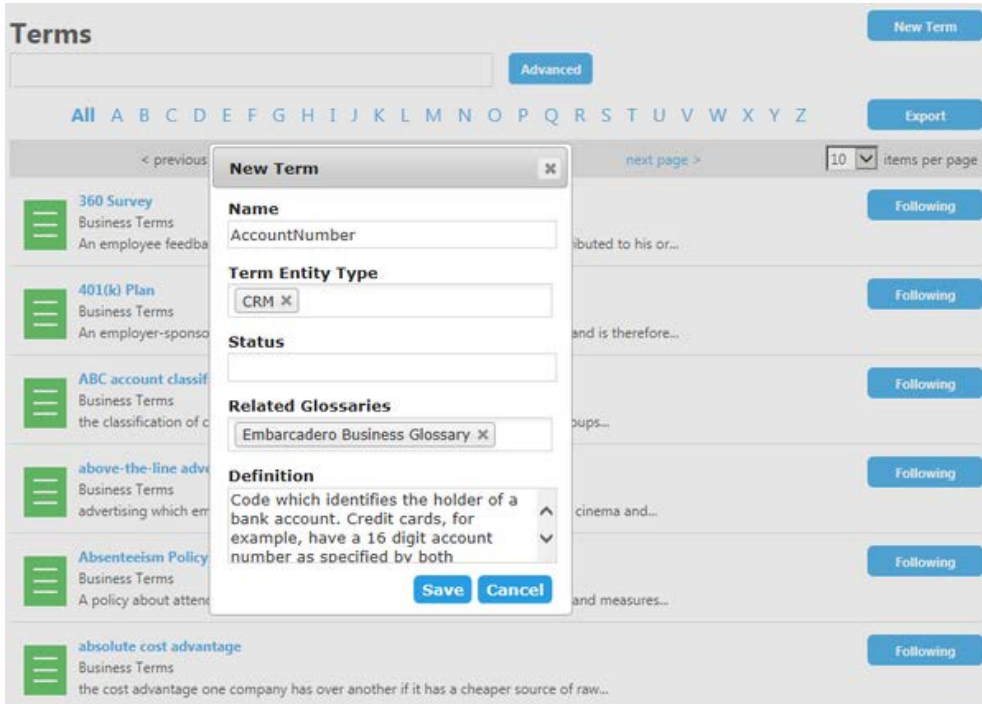
In this tutorial we are going to explain step by step what to do to receive email notifications:

1. First of all, configure **Team Server** for being able to send emails. You can do it in the [Notification Enablement](#) page of the [configurator](#).
2. Include the email where you want to receive the notifications when [creating/editing](#) the user.
3. Make sure you have checked the [options](#) you prefer about receiving notification.

- 4. Test with some posting.

Example

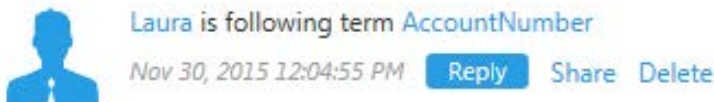
- *Admin* user creates a [new term](#).



- User *Laura* [follows](#) this new term.



- *Admin* user can see this activity in his [stream page](#).



- *Admin* user receive an email on the configured email account similar to the following:

