

CaliberRM 5.1 Integration for Describe Enterprise

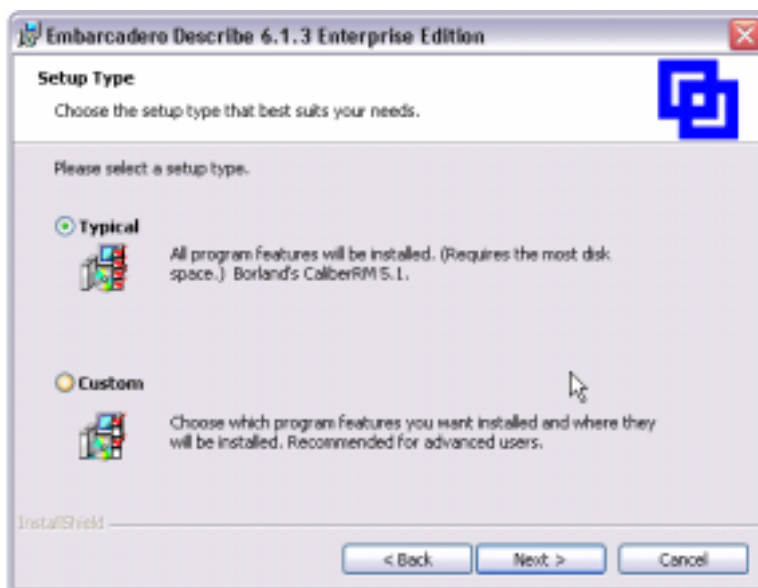
Describe Enterprise integration is now available from within the Borland CaliberRM 5.1 software suite. This document describes how to set up and configure Caliber with Describe Enterprise, as well as how to associate requirements to Describe modeling elements.

Installation and Configuration of Caliber Server

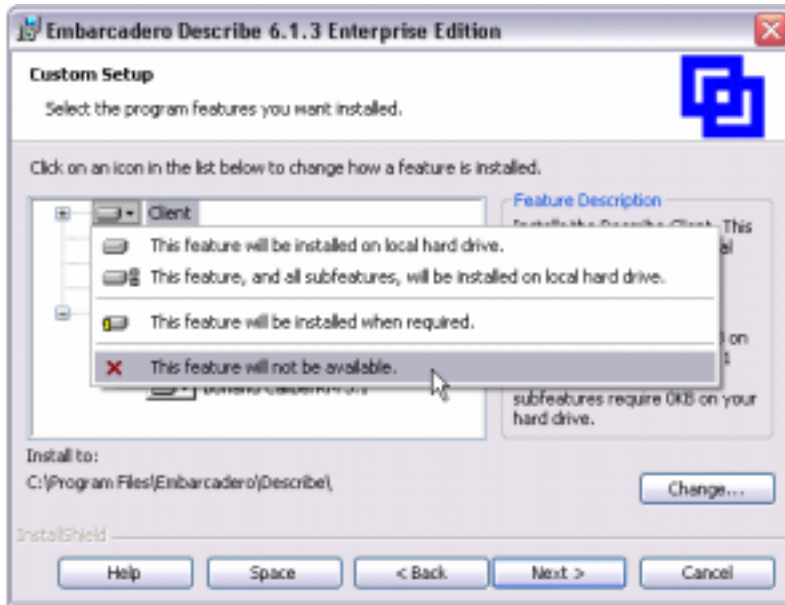
IMPORTANT: Before starting with the Describe integration installation, first validate that the Caliber server and client applications are correctly installed and configured.

Describe Installation

Run the Describe Enterprise setup program on a client machine that has the Caliber Framework Administrator installed. Setup will automatically detect CaliberRM 5.1 on the computer and offer to install the integration.



By default, the Describe Enterprise application will also be installed on this computer. If the Describe client application is not required, simply deselect the Client option in the Custom Setup dialog.



Follow the steps to complete the Setup process to install all necessary files.

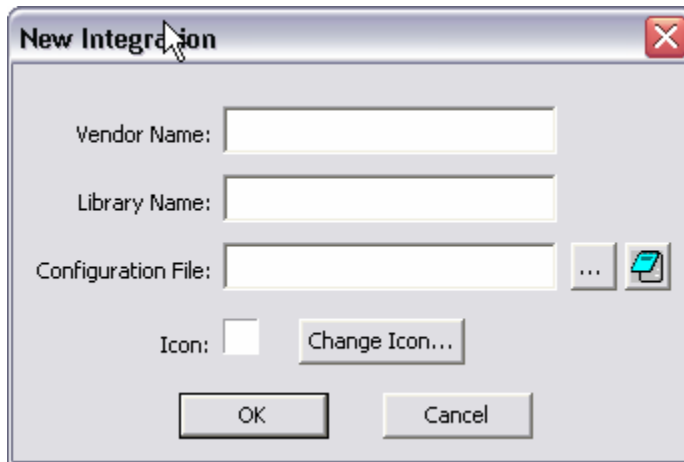
Create a new vendor configuration

Once Describe is installed, run the Caliber Framework Administrator to configure the Describe addin for Caliber. The steps to configure the addin are outlined below:

1. Run the Caliber Framework Administrator.
2. Select a Caliber project in the project tree.
3. Select the External Traceability tab as shown in the diagram below.



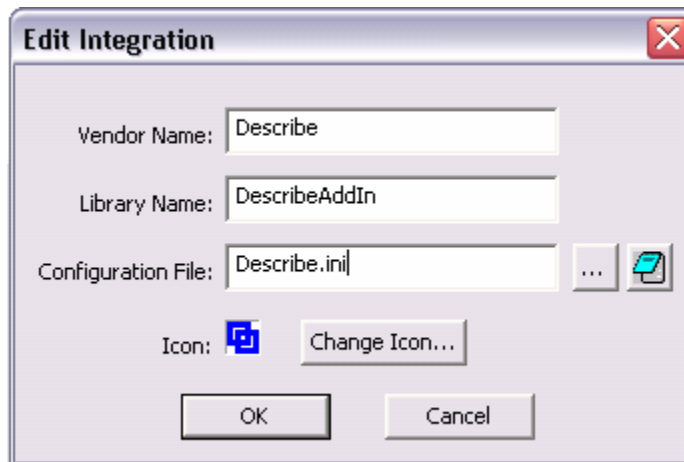
4. Select 'New...' and the **New Integration** dialog box opens:



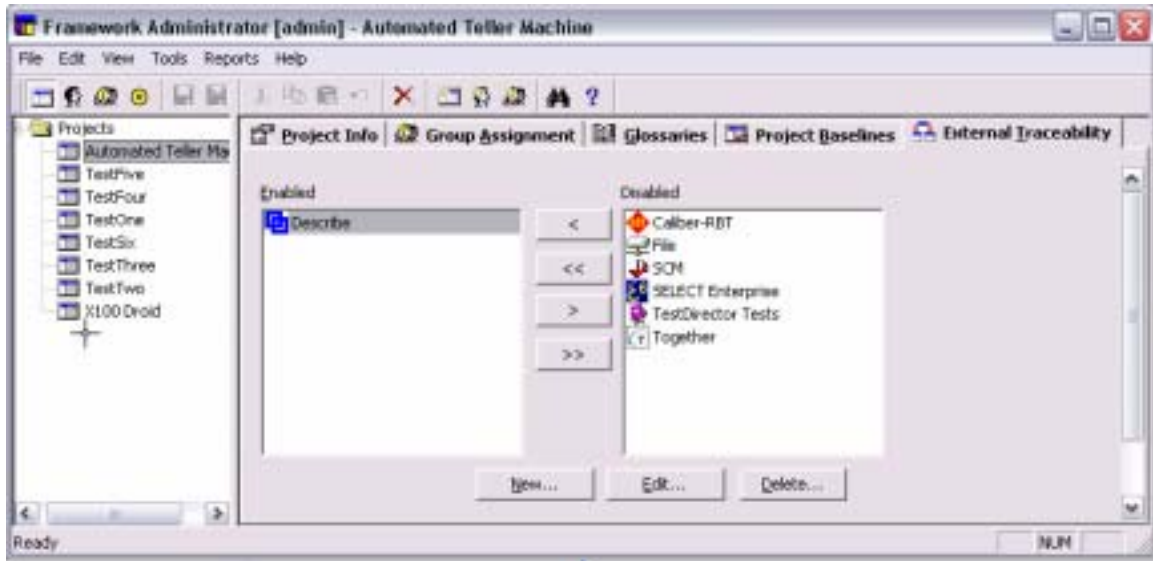
5. Enter the following information
 - a. Vendor Name: Describe
 - b. Library Name: DescribeAddIn
 - c. Configuration File: **C:\Borland\CaliberRMServer\vendorconfig\Describe.ini.**

Note: The location of the Describe.ini depends on whether the CaliberRM server is installed on this computer. If the server exists on another machine, the Describe.ini will be located in the CaliberRM client folder (the default is **C:\Program Files\Borland\CaliberRM\vendorconfig**).

6. Select the Icon checkbox, click the Change Icon button and browse to the location of any icon. (The Describe icon is located in C:\Program Files\Embarcadero\Describe\bin\Describe.exe.)
7. Save the file and click OK to close the **Edit Integration** dialog.



8. Highlight the DescribeAddIn entry in the Disabled box and click the single left arrow button to move it to the Enabled box.
9. Click the Save toolbar button or select File | Save from the menu to save the new configuration.

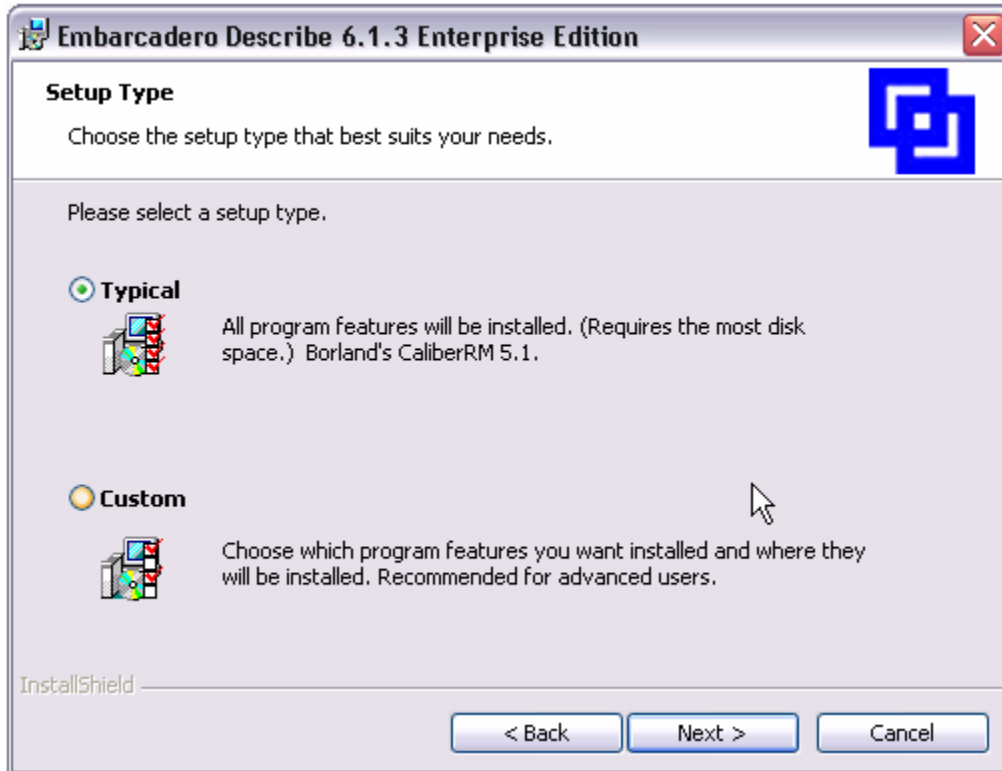


10. Repeat steps 8-9 above for all projects that require Describe integration.
11. After the addin is configured, validate that a Describe tab will be added to the Traceability Modification window of all Caliber projects

Installation and Configuration of Caliber Clients

Run the Describe Enterprise setup program on all CaliberRM client machines. Setup automatically detects CaliberRM 5.1 on a computer and offers to install the integration.

Note: Previous versions of Caliber prior to version 5.1 are not supported and will not be detected by the Setup program.



Complete the Setup process to install all necessary files.

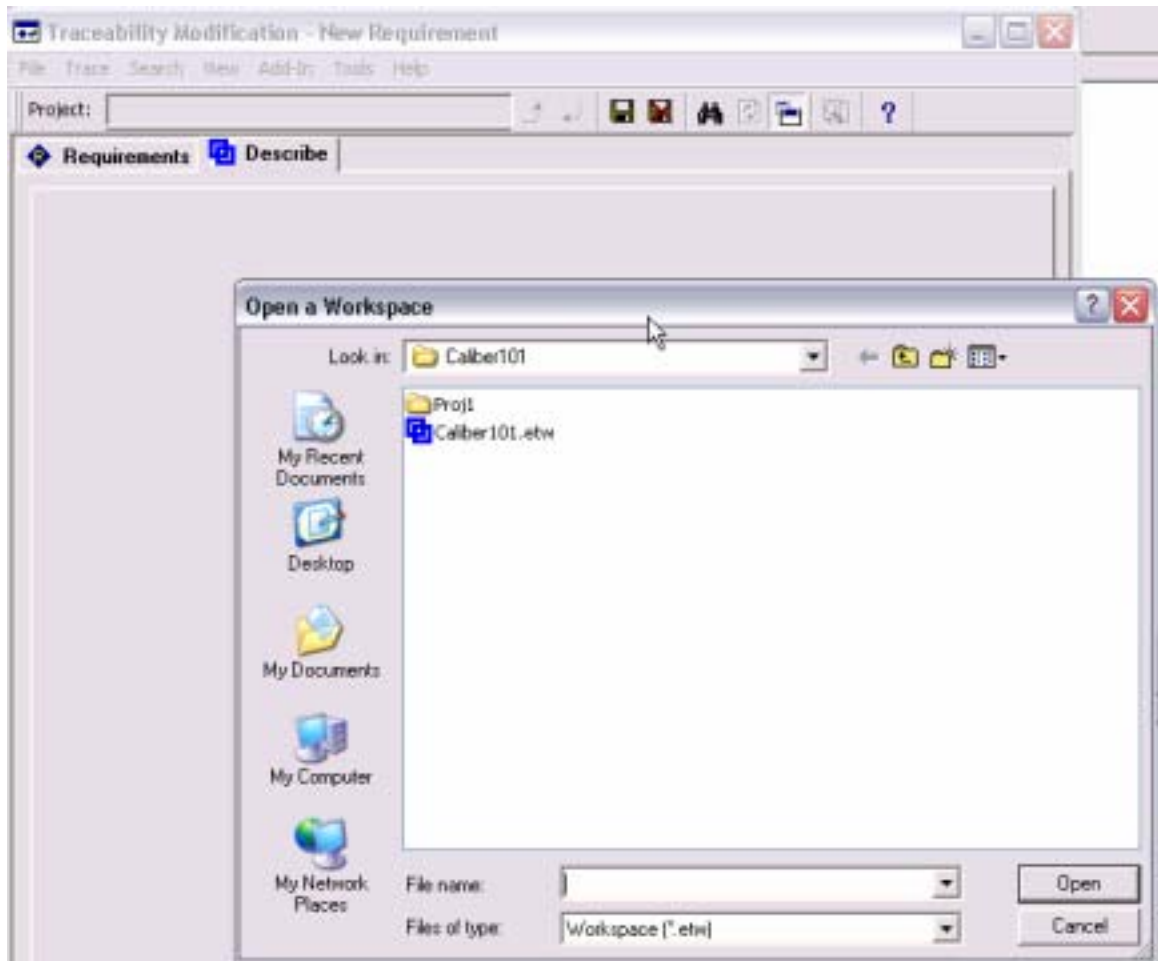
Describe Functionality within CaliberRM

Caliber users may open one or more Describe workspace projects and set requirement trace associations from or to any displayed Describe project or element. Matrix and Node based report viewing allows the user to view the Describe Model elements which 'satisfy' the user requirements. This section describes how to associate a Describe workspace with a Caliber project, and how to map requirements to modeling elements.

Adding a Describe Workspace to the Current CaliberRM Project

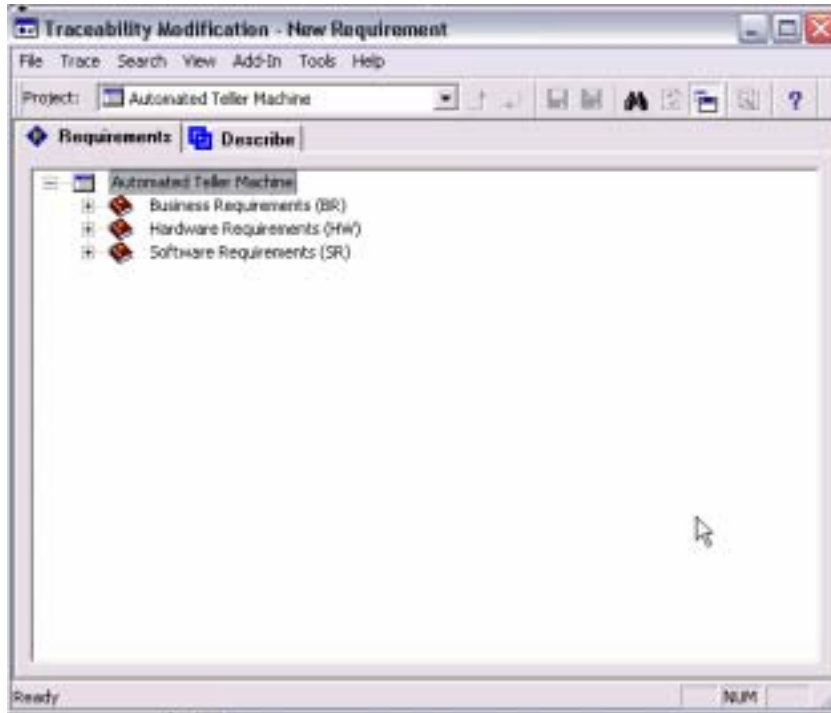
1. To begin working with the **Describe Project Tree** within Caliber, open an existing CaliberRM project, select an existing requirement, and then select the **Traceability** tab. Describe Enterprise opens and displays the Open a Workspace dialog box.

Note: You will be prompted to open a workspace when configuring the first Caliber project only. Once a workspace has been associated, you have to select the modify tab.



2. In the **Open a Workspace** dialog box, browse to the location of the Describe workspace, and click **Open**.

Describe Enterprise creates a new view on the AddIn tab.

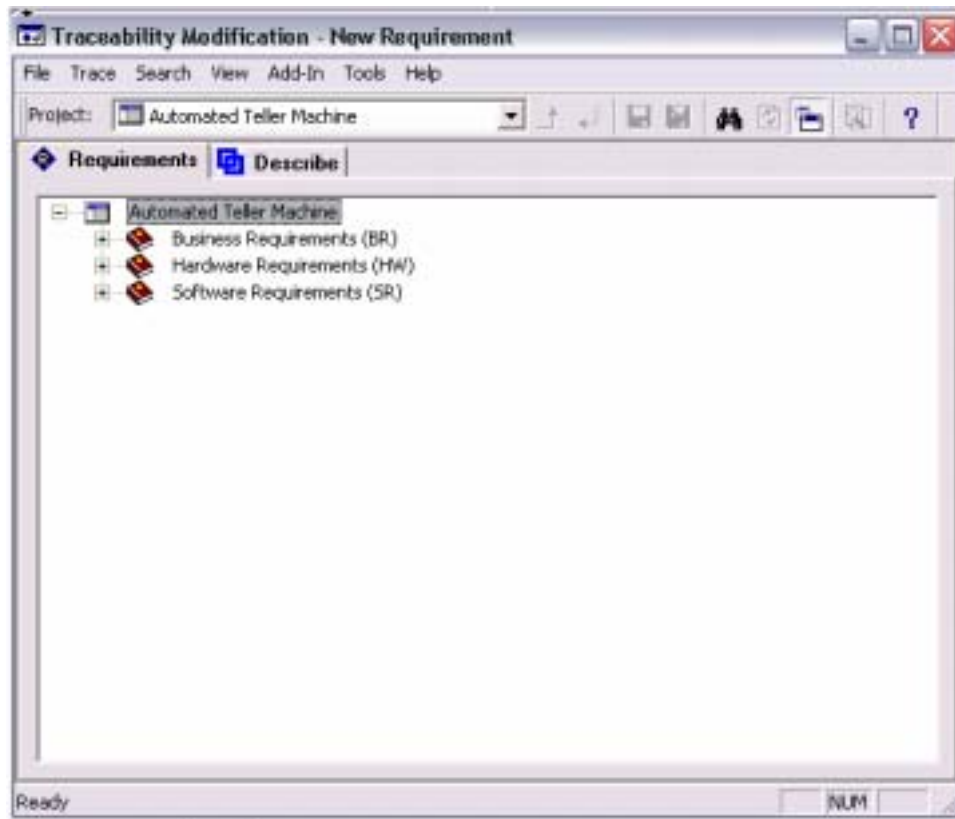


The project(s) within the workspace are displayed with the Closed Project icon.

3. If Describe is already running, after clicking the **Traceability** tab, click the **Modify** button.

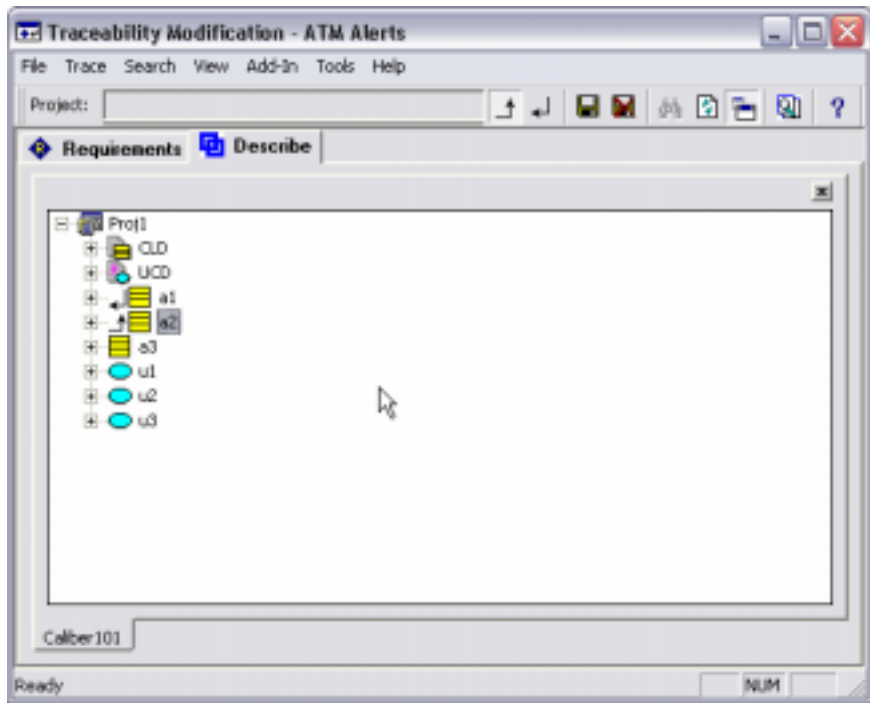


Describe Enterprise opens the current workspaces associated with the target requirements.



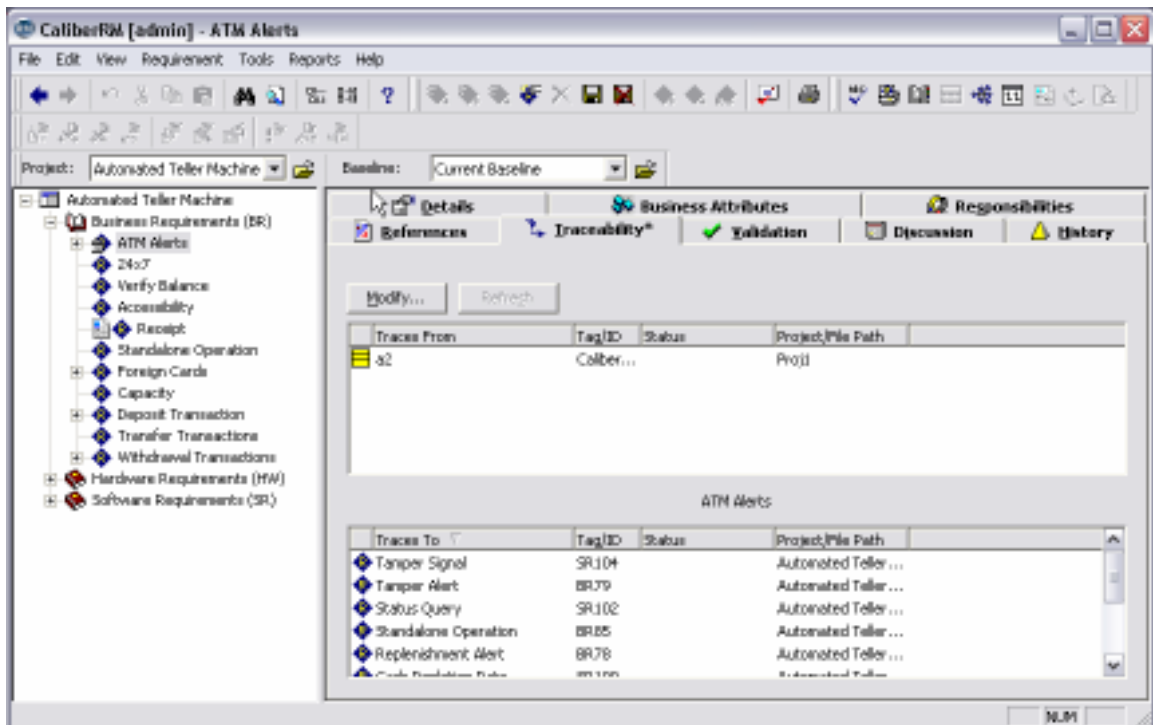
Adding a Trace to a Describe Element

1. Expand the project, select an element, and then on the toolbar, click the **Trace from** or **Trace to** arrow.



2. Click **Save**, and then optionally enter a comment for the new Trace.

Describe Enterprise updates the Traceability Tab Trace From/To panes in the main CaliberRM window showing the newly added Trace element and its project information.



At this point, you can continue working in the main CaliberRM window, or you can expand the project tree nodes and add additional traces in the Traceability Modification window.

Adding an Additional Workspace

1. To add an additional workspace, on the toolbar, click the **BuildView** button.



Describe Enterprise opens the **Open a Workspace** dialog box.

2. In the **Open a Workspace** dialog box, browse to location of the target Describe workspace, and then click **Open**.

Describe Enterprise adds workspace as a new tab within the DescribeAddIn tab.



Additional Notes

- When a user begins a new Caliber session, the Describe workspaces are silently loaded as needed when first referenced by a report or Traceability display pane.
- If a Describe workspace is not found, the user is prompted to browse for the workspace. The user may choose to not be prompted for the remainder of the session. In this case, Describe elements for unloaded workspaces will continue to display as 'Unavailable Describe Element'. The user has the option to manually open these workspaces later.
- The user has the option to manually load additional workspaces by selecting the BuildView toolbar button from within the Describe tab of the Traceability Modification dialog. Each opened workspace will display in a separate tab.

Known Issues

- When running CaliberRM with the Describe integration, currently you cannot run the Describe stand-alone at the same time. If the Describe project requires modifications (adding, changing, deleting Describe elements) first close CaliberRM and then make the changes to the Describe workspace in the Describe stand-alone version.
- If you would like to associate a new set of requirements and a new Describe workspace without inheriting the current workspace(s), you must close CaliberRM and restart it in order to get the prompt to find the Workspace. Also, if you press cancel or select the wrong one, you must restart CaliberRM.