



Product Documentation

AppWave™ Browser

Apps User Guide

Version 4.2
Published August, 2013

© 2013 Embarcadero Technologies, Inc. Embarcadero, the Embarcadero Technologies logos, and all other Embarcadero Technologies product or service names are trademarks or registered trademarks of Embarcadero Technologies, Inc. All other trademarks are property of their respective owners.

Embarcadero Technologies, Inc. is a leading provider of award-winning tools for application developers and database professionals so they can design systems right, build them faster and run them better, regardless of their platform or programming language. Ninety of the Fortune 100 and an active community of more than three million users worldwide rely on Embarcadero products to increase productivity, reduce costs, simplify change management and compliance and accelerate innovation. The company's flagship tools include: Embarcadero® Change Manager™, CodeGear™ RAD Studio, DBArtisan®, Delphi®, ER/Studio®, JBuilder® and Rapid SQL®. Founded in 1993, Embarcadero is headquartered in San Francisco, with offices located around the world. Embarcadero is online at www.embarcadero.com.

Contents

Welcome to AppWave Browser	5
About This Document	5
Introduction to AppWave	5
Additional Product Information	6
Install and Set Up AppWave Browser	7
Downloading and Installing AppWave Browser	7
Connecting to AppWave on Your Network	9
Configuring AppWave Browser Options	11
Specifying AppWave Connection Properties	13
Use AppWave Browser Apps	15
Exploring AppWave	16
Logging in to AppWave	17
The AppWave Browser Interface	17
Main Interface Components of the Apps Tab	21
Understanding AppWave Apps	26
Limitations of Application Virtualization	27
Launching Apps	27
Exploring AppWave Store	29
Creating Apps for Custom Applications	31
Using Apps Offline	31
Installing Products	31
Using Licenses	32
Running Apps from the Windows Desktop	33
Keeping Your Apps Current	36
Reading and Writing App Reviews	37
Removing Apps	40
Uninstalling AppWave Browser	41
Index	43

CONTENTS

WELCOME TO APPWAVE BROWSER

This section has the following topics:

- [About This Document](#)
- [Introduction to AppWave](#)
- [Additional Product Information](#)

ABOUT THIS DOCUMENT

This *AppWave Apps Browser User Guide* is the primary reference for the Apps tab of AppWave Browser, the user interface to AppWave and the Embarcadero-hosted AppWave Public Store. It provides an introduction to AppWave Browser and detailed instructions for common tasks.

NOTE: For the latest versions of AppWave documents and for information that will help you install and upgrade, see the Embarcadero documentation website. Always make sure to consult the README for late breaking updates at docs.embarcadero.com/products/appwave.

INTRODUCTION TO APPWAVE

The AppWave application includes the following:

- **AppWave™ Enterprise.** When you install AppWave Enterprise, the installation includes the AppWave Browser, the AppWave Store, the AppWave Studio, and the AppWave Admin.

You can centrally provision, manage and update products and licenses inside your own firewall. You control what product versions are available to end users from their AppWave Browser. With network licensing, you can use AppWave to centrally control the list of authorized users. AppWave also supports you in managing many third-party applications that can be mastered as Apps in AppWave Studio. Using AppWave Studio, you can also broadcast in-house developed applications. (Uses AW and AppWave interchangeably)

AppWave simplifies licensing, reduces costs, and controls access by consolidating, centralizing, and standardizing application delivery. Database professionals and application developers have on-demand access to Embarcadero applications when they need them. You can run multiple versions side-by-side, and adapt tool sets by project and platform to respond faster to changing business demands.

For more information, see the *AppWave™ Admin Quick Start Guide* and the *AppWave™ Administrator Guide*.

- **AppWave Browser:** A lightweight client that is the primary entry point for the various products used with AppWave. It allows users to launch, install, update, review, and select product versions, all from a single interface. It also provides access to AppWave Studio and AppWave Administrative functions. From the AppWave Browser you can access the AppWave Store where you can search for, run, and review hundreds of free apps. The same administrative functionality that is available in the Admin console application is also available on the AppWave Admin tab. For more information, see the *AppWave Browser Apps User Guide* and the *AppWave Studio User Guide*.
- **AppWave Apps:** Provides instant access to your products without installation. AppWave saves valuable time by allowing quick access to products, even in locked-down desktop environments where installing software is problematic. For more information about AppWave Apps, see [Understanding AppWave Apps](#).
- **AppWave Public Store:** Provides access over the internet from the AppWave Browser to hundreds of free apps and trials of Embarcadero apps. You can search for, run, and review apps in the AppWave Public Store, which is hosted by Embarcadero,
- **AppWave Studio:** This app is used to create an app file for a customer product. This product can be an Embarcadero product or a generic application. The creation process walks you through a series of steps where you author and then broadcast the AppWave App for your selected product. This can then be run on the local machine and be launched using AppWave Browser. Once broadcasted to AppWave, the app can be broadcasted to AppWave Browser users over the network. You need a special license to use AppWave Studio, either AppWave for X, AppWave for Custom, or AppWave for Vendor. For more information, see the *AppWave Studio User Guide*.

ADDITIONAL PRODUCT INFORMATION

The Embarcadero Web site provides access to information and resources useful through the life of your product. This includes access to:

- Technical Support
- Case studies, video presentations, webinars and white papers
- Product communities through the Embarcadero Developer Network
- Free trials of related products

See www.embarcadero.com/support:

INSTALL AND SET UP APPWAVE BROWSER

This section is comprised of the following topics:

- [Downloading and Installing AppWave Browser](#)
- [Connecting to AppWave on Your Network](#)
- [Configuring AppWave Browser Options](#)
- [Specifying AppWave Connection Properties](#)

DOWNLOADING AND INSTALLING APPWAVE BROWSER

You can access applications from AppWave using AppWave Browser. Follow these instructions, and substitute the correct values for the AppWave host name and port. Your administrator provides this information to you.

NOTE: If you do not have administrator privileges to your system, ask your administrator to install AppWave Browser for you.

If you have an AppWave Store (AppWave)

- 1 From a browser, connect to your AppWave at::

`http://<serverhostname>:<portnumber>/aaserver.`

(for example `http://<myapps.embarcadero.com>:<80>/aaserver`)

The AppWave Home page opens.

embarcadero ADMIN Help

appwave™
Bring your desktop into the 21st century
With appwave, software moves as quickly as you do.

Get the AppWave Browser

Get the latest version of the AppWave Browser for Windows (English version)

Please note: To install the AppWave Browser, administrative privileges are required to the Windows operating system you are installing to. During startup you may be required to provide the following AppWave address:

app://WVAPPS.embarcadero.com/80

Install **Browse Catalog**

AppWave Resources

Experience all the latest resources for AppWave:

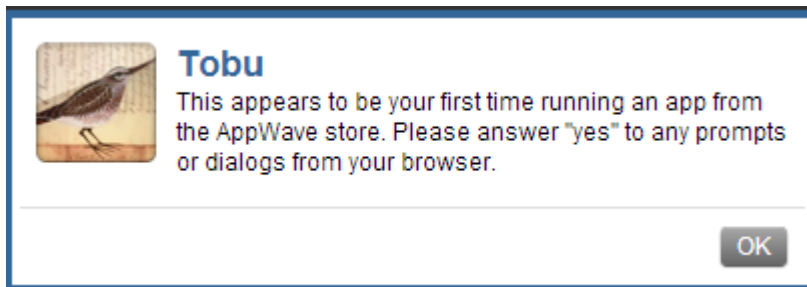
- Marketing materials, video tutorials and developer resources:
www.embarcadero.com/products/appwave
- Documentation for End-users, Authors and Administrators:
docs.embarcadero.com/products/appwave

- 2 Click **Install** and depending on the Security Warning settings, you are given the choice to run or save the executable. The download location depends on your browser setting.
- 3 Click **Run** and the download starts. When the download is complete, change the program name to AppWaveBrowser.exe and run the installer.
NOTE: If you are downloading AppWave Browser from the AppWave Store, <http://windowsapps.com>, you will install the Browser the first time you select an app to run.
- 4 Accept the End User License Agreement and AppWave Browser loads and connects to your AppWave.

If you do not have an AppWave Store

- 1 From a browser, connect to the Embarcadero-hosted AppWave Public Store at <http://www.windowsapps.com> and the AppWave Store opens.
- 2 Select an app you want to run from the Store. The first time you ran an app from the Store a prompt opens asking you to download the AppWave Browser. Click **OK** and then follow the prompts to install the AppWave Browser.

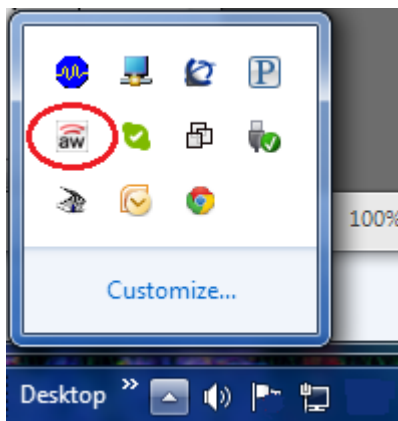
NOTE: Depending on your web browser and operating system, you may need to approve one or more security dialogs to accept this installation.



- 3 The AppWave splash screen appears tracking the download of the AppWave Browser.

NOTE: This may take a few minutes. Please note that there is no progress bar or hourglass indicating that the AppWave Browser is being installed.

- 4 Once installed the appwave applet appears in the System Tray.



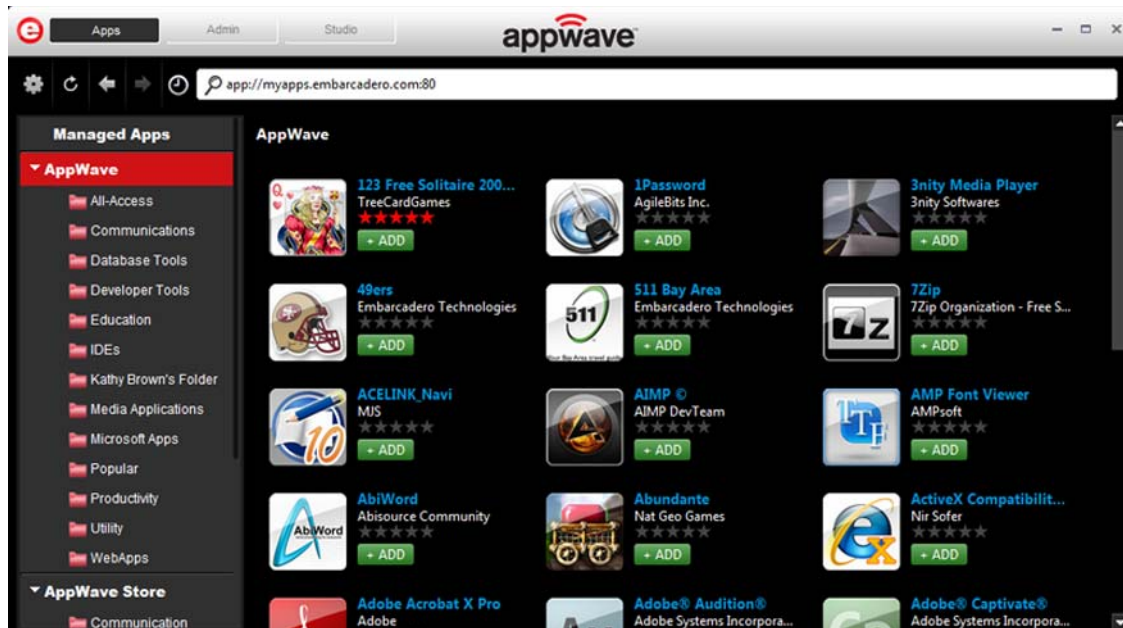
CONNECTING TO APPWAVE ON YOUR NETWORK

To connect to AppWave on your network, you must first connect to AppWave via a Web browser and download AppWave Browser. AppWave handles the licensing, and you can immediately begin using the applications that your administrator has permitted you to use. AppWave Browser is configured to connect to the AppWave from the default browser.

To launch AppWave Browser, double-click the AppWave Browser executable.

NOTE: If the administrator has not already configured your user ID allowing you access to the applications in AppWave, you will either see an information dialog advising you to contact your administrator or a user account is created automatically for you.

The AppWave Browser launches. You are automatically connected to your AppWave, which is the AppWave you downloaded from the AppWave Browser application. Any applications the administrator has granted you access to are shown in the AppWave Browser product window.




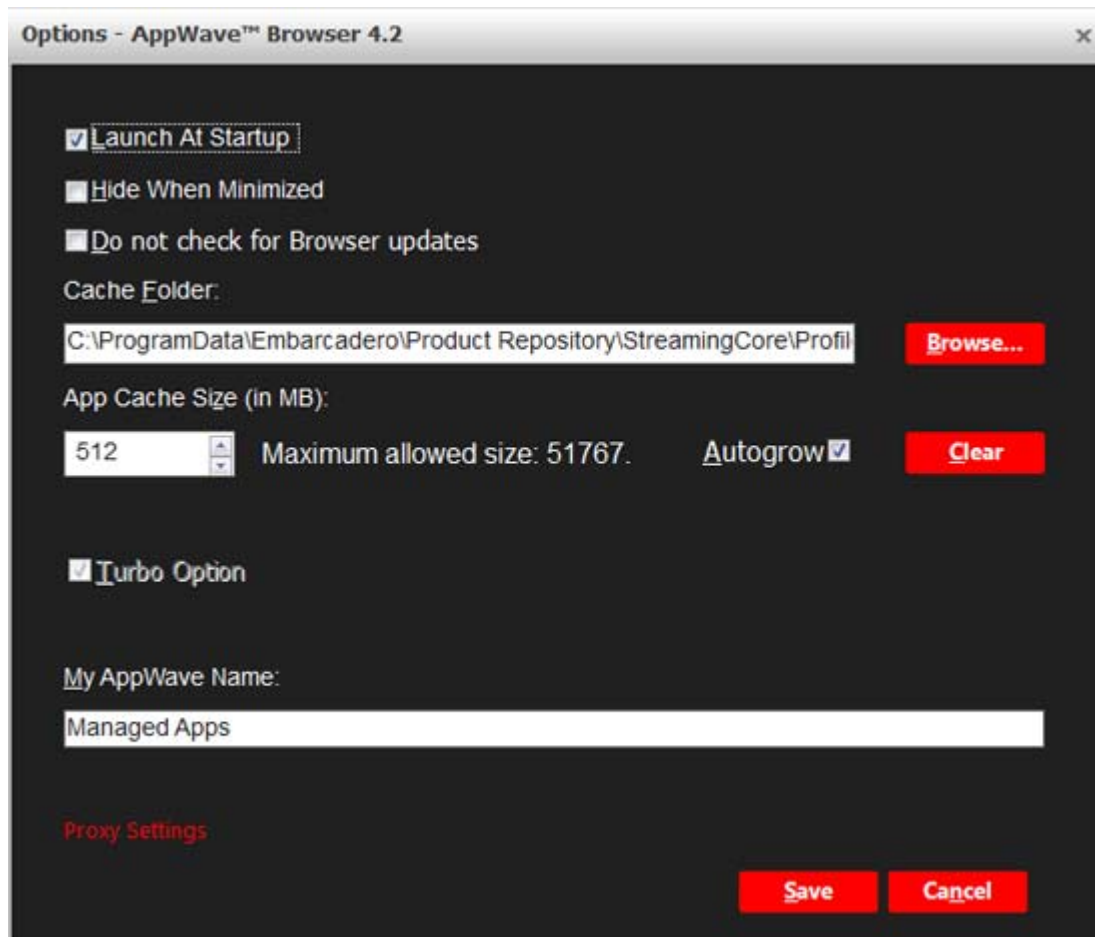
If your Windows user account has administrative privileges, AppWave Browser automatically runs in Turbo Mode, where a small piece of software is added to your operating system enabling AppWave Browser to run faster.

Turbo Mode is recommended for optimal performance. For more information, see [Configuring AppWave Browser Options](#). If you do not have administrative privileges ask your administrator to install AppWave Browser for you in order to run in Turbo Mode.

CONFIGURING APPWAVE BROWSER OPTIONS

AppWave Browser options allow you to configure AppWave Browser behaviors including launching, download folder location, and proxy and AppWave server specifics.

- 1 Click the **Tools and Options** icon [] and choose **Options...** and the **Options** dialog appears.



Specify your preferences and click **Save**.

- 2 The following describes the available options:

Launch At Startup: Starts AppWave Browser when you log into Windows. When selected this option also loads a small piece of your downloaded apps to enable file associations with the apps. For example, you could double-click a .docx file and the Microsoft Word app would launch, or you could right-click the .docx file and select Print and the Microsoft Word app would launch and start printing the document.

Exiting from AppWave Browser removes the file associations. Removing a downloaded app in AppWave Browser also removes the file associations for that app.

Hide When Minimized: Hides AppWave Browser when you click the minimize button,

otherwise AppWave Browser window is reduced to the size used when it was last minimized. When AppWave Browser is minimized it can be brought to the forefront by clicking the AppWave Browser applet in the system tray.

Do not Check for Browser Updates: Does not check for updates for the AppWave Browser application when the Browser starts up. If you are running in Turbo mode and update the Browser, you need to restart your system.

Cache Folder: Browse to the folder where you want your downloads to be stored. This is for your Product Repository where the app is streamed to when you run it. This may be located on a local or shared network disk. If you decide to change the location of the cache folder after downloading apps, depending on the size of the apps, it may take approximately one minute for every seven apps downloaded.

App Cache Size: This is the amount of disk space to set aside as cache for use with streamed applications. A larger cache can increase the speed at which an app responds and can increase performance when running multiple apps simultaneously. You must have Windows administrative privileges to increase the cache size.

Autogrow: Select to enable the amount of disk space for the cache that is available to increase as you launch more apps or as the apps you are running require cache space. If you have Autogrow selected, you won't need to remove apps and clear the cache to increase the size of the cache.

Clear: Click to remove app details from the cache such as default settings for the app, for example the default document to open. In order to clear the cache you first need to close all apps. You may want to use this option if you try to run an app and it won't launch because there isn't enough disk space allocated to the cache. Clearing the cache may remove file associations for apps until you launch the relevant app again. If you have Autogrow selected, you won't need to clear the cache.

Turbo Option: We recommend that you enable the Turbo mode because it provides improved performance and better support for more applications. Some applications do not run if Turbo is not enabled. It requires Administrative privileges for the computer on which you are running AppWave Browser. If the Turbo Option is enabled, when you run AppWave Browser, a file system driver is installed which allows AppWave to communicate with your hardware and operating system at a much lower level. AppWave Browser and the AppWave applications you run while Turbo is enabled runs faster because of the installation of the file system driver. By default, AppWave Browser runs in this mode if you installed the Browser using a Windows account that has administrative privileges.

NOTE: File associations do not work when Turbo mode is disabled. You will not be able to right-click a file in Windows Explorer and choose to open it with an app and double-clicking an app-associated file does not launch the app.

When Turbo is not enabled, AppWave Browser does not require Administrative privileges. This is a zero-install mode for locked-down desktops where your operating system user permissions do not allow you to install drivers. Performance is only slightly less than that provided in Turbo mode.

To change the Turbo mode setting, you need Administrative privileges for the computer you are running AppWave Browser on. If necessary, ask your administrator to reinstall AppWave

Browser for all users on your machine. This enables Turbo mode.

If you change the Turbo option setting, your computer needs to be restarted before the change takes effect.

Some applications do not run with Turbo mode disabled. If this is the case, the app displays an error such as "This application will not run on this operating system in Non-Turbo Mode." or "This application will not run on [operating system]. Please try another application."

My AppWave Name: This is the name of your local repository where your apps you have downloaded are listed and helps you easily find your apps. The default setting is "Managed Apps". You can change this menu item to something like <Your name> Apps.

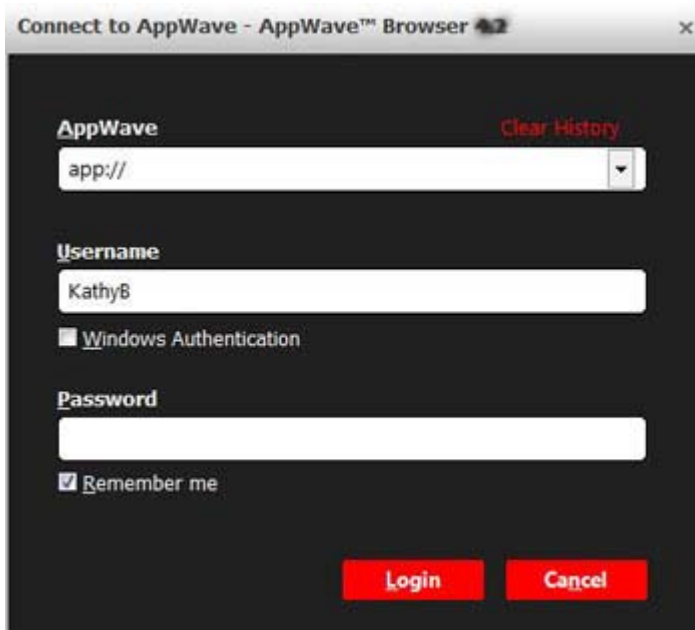
Proxy Settings: AppWave automatically uses the proxy settings you set in Windows. Click this button to gain access to the Windows Internet Properties dialog where you can set or change your proxy settings.

SPECIFYING APPWAVE CONNECTION PROPERTIES

When you download AppWave Browser from the AppWave home page, the AppWave Browser includes information about how to connect to that AppWave. If AppWave accepts your Windows credentials, then when you start AppWave Browser you should automatically connect to your home AppWave. If you need to connect using another login name and password, or to a different AppWave, or to AppWave via a proxy server, follow the directions below.

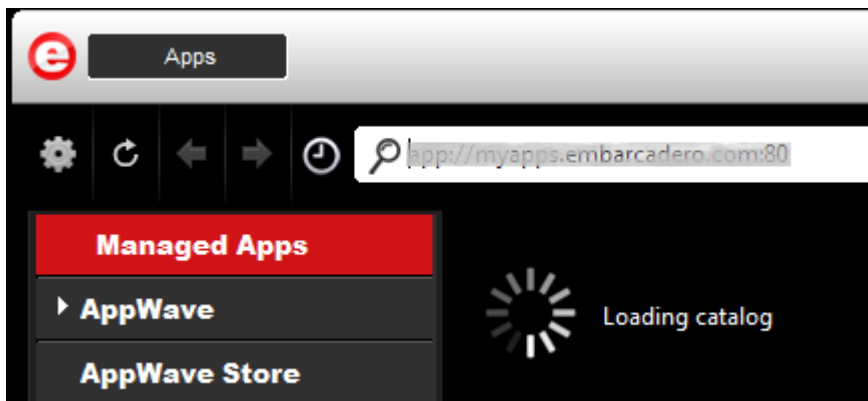
- 1 Click the **Tools and Options** icon [] and select **Connect...**

The **Connect to AppWave** dialog appears.



The screenshot shows a dialog box titled "Connect to AppWave - AppWave™ Browser". It features a dark background with white text and input fields. At the top, there is a dropdown menu labeled "AppWave" with "app://" selected and a "Clear History" link to its right. Below this is a "Username" field containing "KathyB". A checkbox labeled "Windows Authentication" is checked. The "Password" field is empty. At the bottom, there is a checked checkbox for "Remember me" and two red buttons labeled "Login" and "Cancel".

- Specify your connection properties and then click **Login**. The AppWave Browser opens and displays a Loading Catalog icon.



Once the catalog is loaded, all available apps are displayed.



USE APPWAVE BROWSER APPS

This section covers the following topics to help you understand and effectively use the AppWave Browser Apps tab:

- [Exploring AppWave](#)
- [Logging in to AppWave](#)
- [The AppWave Browser Interface](#)
- [Understanding AppWave Apps](#)
- [Launching Apps](#)
- [Exploring AppWave Store](#)
- [Creating Apps for Custom Applications](#)
- [Using Apps Offline](#)
- [Installing Products](#)
- [Using Licenses](#)
- [Running Apps from the Windows Desktop](#)
- [Keeping Your Apps Current](#)
- [Reading and Writing App Reviews](#)
- [Removing Apps](#)
- [Uninstalling AppWave Browser](#)

NOTE: For information on using the Studio and Admin tabs of the AppWave Browser, see the *AppWave Studio User Guide* and the *AppWave Administrator Guide* respectively.

EXPLORING APPWAVE

Once you have installed AppWave Browser, from the AppWave home page, you can now view your available apps on your private AppWave Store.



To login you must provide your user credentials, as specified by your administrator, in order to browse your private AppWave Catalog.

NOTE: When connected to the internet, you can also see the free apps available on the Embarcadero AppWave Public Store at windowsapps.com.

From your AppWave catalog, you can browse for applications, view app details, and run apps.



[Home](#)
[All Apps](#)
[All-Access](#)
[Communications](#)
[Database Tools](#)
[Developer Tools](#)
[Education](#)
[IDEs](#)
[Media Applications](#)
[Microsoft Apps](#)
[Popular](#)
[Productivity](#)
[Utility](#)
[WebApps](#)
[admin's Folder](#)


ESBCalc™ 7.3 Free

Version: 7.3

★★★★★ | All Apps, Productivity, Utility | ESB Consultancy

RUN

[Overview](#)
[Details](#)
[Reviews](#)
[Versions](#)


Application Description

It does not support Exponential Notation, but does include a number of functions (including Trigonometric, Hyperbolic, & Logarithmic - Base 10, Base 2 & Natural), Paper Trail, Clipboard Support, History of results and more.

[Home](#) | [Legal](#)

© Copyright 2013 Embarcadero Technologies, Inc. All Rights Reserved

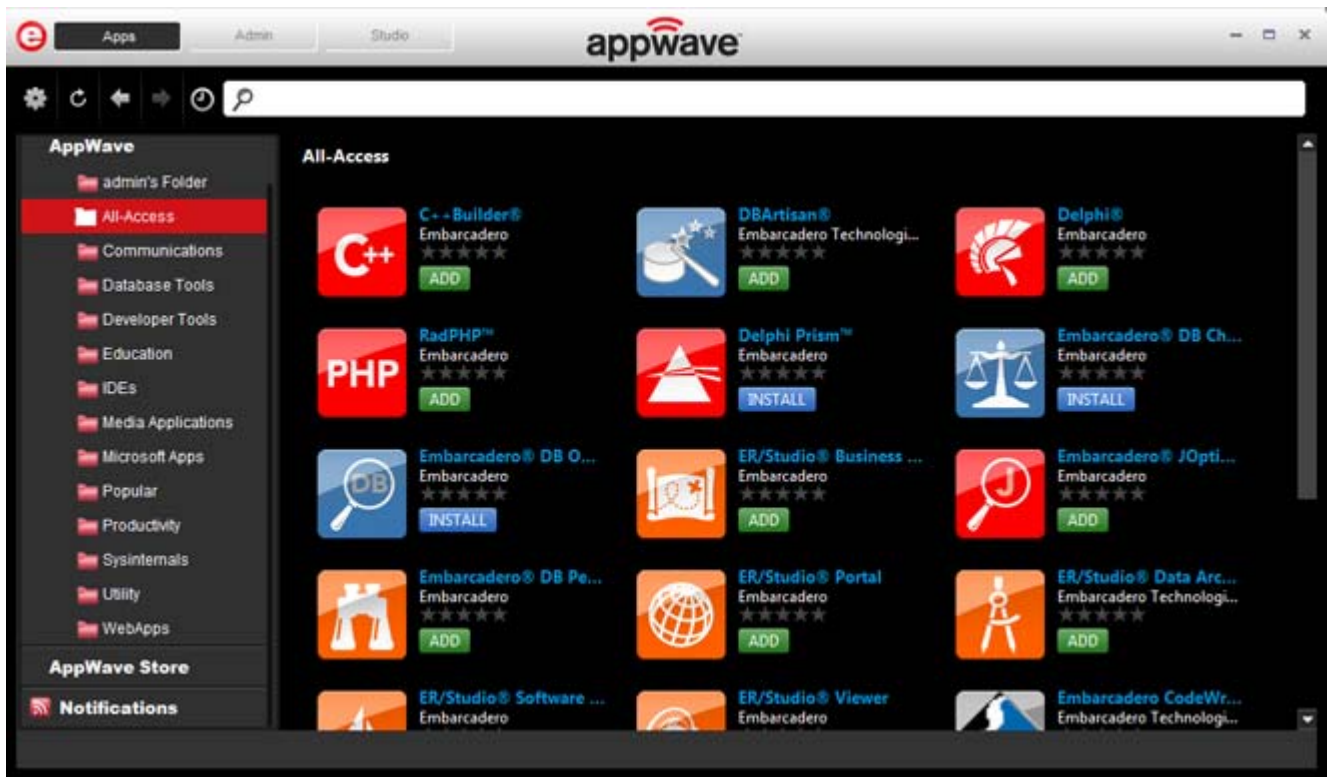
LOGGING IN TO APPWAVE

When you launch AppWave Browser, it passes your Windows login name and password to your AppWave for authentication. This is the AppWave from which you downloaded the AppWave Browser executable. Depending on how your AppWave is configured, if a user account does not exist for that login name and password, AppWave Browser may prompt you to create a user account. If you choose to, an account will be created for you and you will be assigned to the All Users configuration, which may mean that your access to products and features is limited. Contact your AppWave administrator to create your account with the product and feature access you require.

THE APPWAVE BROWSER INTERFACE

The tabs you see and the functions you have access to are determined by the permissions granted to your account by your AppWave administrator. You will not see the Studio or Admin tabs unless given permission by the administrator. You will see only the Apps tab.

The following image shows the AppWave Browser user interface with the Admin and Studio tabs.



The next image shows the AppWave Store user interface available when you have internet connection.



When you search for an app, your app window resembles the following image.



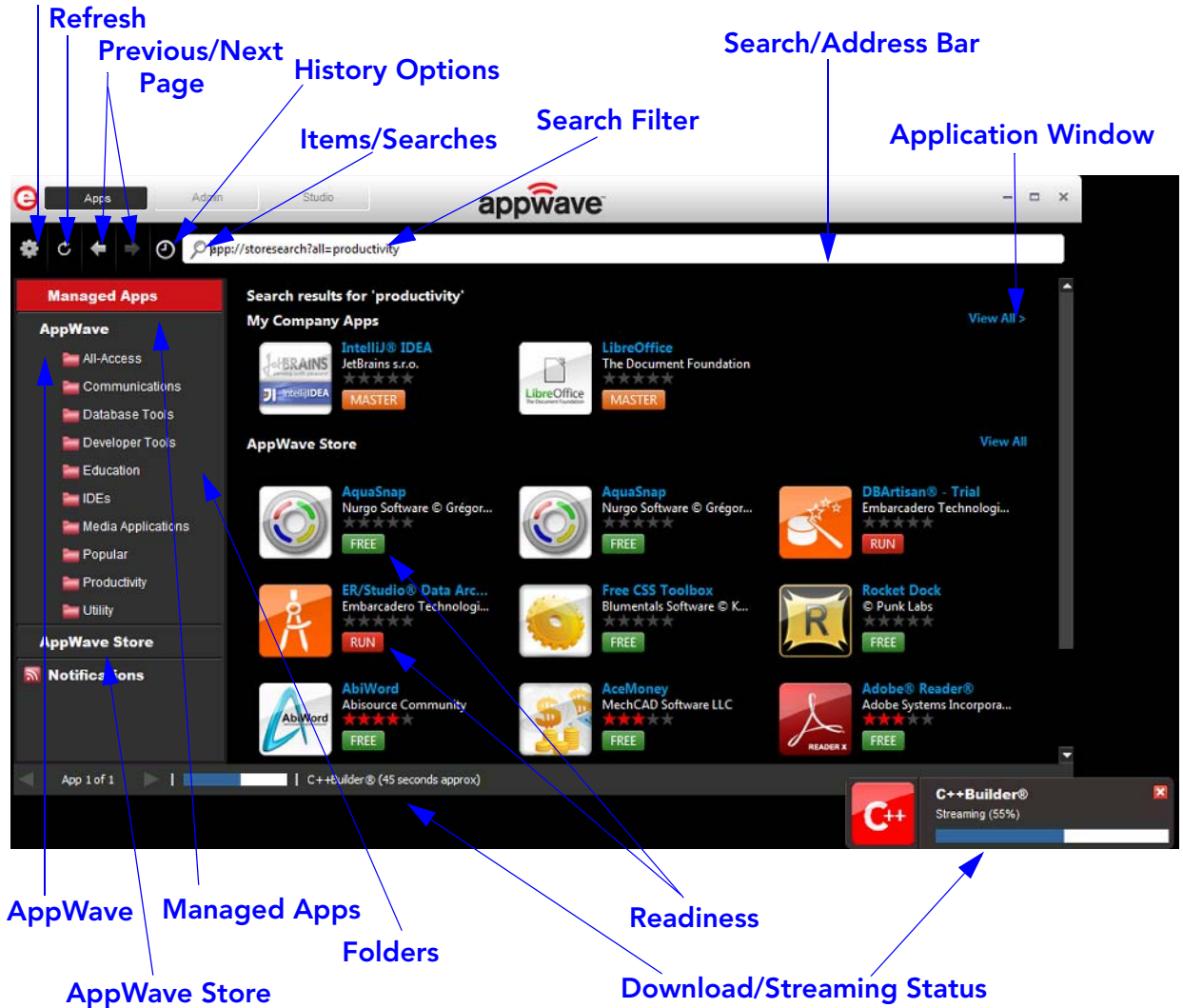
For information on the AppWave Studio tab, see the *AppWave Studio User Guide*.

For information on the AppWave Admin tab, see the *AppWave Administrator Guide*.

MAIN INTERFACE COMPONENTS OF THE APPS TAB

The following describes the main interface components of the AppWave Browser Apps tab and their usage.

Tools and Options



Click a link below to find out more:

[Managed Apps](#)

[Folders](#)

[Notifications](#)

[Application Window](#)

[Previous/Next Page](#)

[View Channel](#)

[AppWave](#)

[Download/Streaming Status](#)

[Items/Searches](#)

[Tools and Options](#)

[History Options](#)

[Search/Address Bar](#)

[All-Access](#)

[AppWave Store](#)

[Search Filter](#)

[Refresh Tools](#)

[Readiness](#)

Managed Apps

Contains shortcuts to apps that you have downloaded. Helps you easily find your apps. You can change the title of this menu item to something like Denny's Apps, in the AppWave options dialog accessed on the Tools and Options (⚙️) menu.

AppWave

Displays all the applications available to you on AppWave. These can include Embarcadero applications, third-party applications Embarcadero supports, and also apps mastered by your company through AppWave Studio and broadcast from AppWave. When new applications become available you are notified in your system tray. You can then check the Notifications to see what's new on AppWave.

All-Access

Shows all the applications licensed to your company through the Embarcadero AppWave Store.

Folders

Applications available to your company are organized into these folders. These are folders your administrator created, named, and assigned to specific users or to all users. They contain applications to which your administrator is granting you access.

Download/Streaming Status

The first time you run an app, the app starts streaming from your private AppWave Store to your desktop, or if it is not already available on your private store, it streams from the AppWave Public Store to your private store. This initial run time is a little more lengthy than subsequent launches so AppWave Browser continually notifies you of the download/streaming process. Once the app is finished downloading, it launches and you can run it. Thereafter the status of the app changes from FREE or +ADD to RUN and is quickly available for your use.

AppWave Store

Connects you to the Embarcadero AppWave Public Store where you can search through, run, and read and write reviews for hundreds of free apps.

Notifications

These messages are generated by AppWave. The AppWave administrator configures what types of messages are sent out as notifications and can include new product or version availability, downloads completed, and download errors. You can also subscribe to an RSS news feed of notifications from the AppWave Home page of the AppWave console application.

Items/Searches

Click to select from a list of items previously selected or searches previously run, or to clear previous items or searches.

Application Window

Shows a list of applications. The list that appears depends on what is selected in User's Apps, AppWave, or entered in the Search Bar. Your administrator can set AppWave to automatically cache apps in your repository when you launch AppWave Browser and connect to the private AppWave.


Tools and Options

Click the gear icon to:

- run the selected app,
- view its information channel,
- connect to and specify the AppWave you connect to,
- configure licensing options such as adding a license certificate for an Embarcadero app,
- access AppWave help for the selected tab and the main Quick Start help menu which introduces you to the various components of AppWave,
- view version information, and
- exit the application.

The options available depend on what is selected in *Managed Apps*, what is selected in the AppWave menus, and user permissions.

Refresh Tools

Click  or press F5 to see everything that is new since the last auto refresh or reconnect; this includes updates to the following:

- **App ratings and reviews:** such as when a new review was added, rejected or removed.
- **License permissions:** such as when the admin has assigned to you or denied you access to a license.
- **Applications:** such as when a new application was added or removed.
- **Folders:** such as when the user has been assigned a new folder or an already assigned folder was removed.
- **User permissions.** such as when the admin grants authoring permission enabling you to use AppWave Studio.
- **New Versions Available,** such as when a new version of an application was added.

AppWave Browser is automatically refreshed every five minutes.

Previous/Next Page

If you change the contents of the Application Window by searching and filtering you can switch back to a previous view and then return to the previously most recent view by clicking these buttons.

History Options

Gives you quick access to apps you recently ran and searches you recently requested. You can also clear the history of recent apps and searches.

Readiness

The icons show the status of the app.

RUN Launches an app that has been cached on your private AppWave. Apps you have **Run** appear in the Application Window when you click **Managed Apps**.

+ ADD Adds an app to your local repository. Added apps automatically appear in your **Managed Apps** folder. Once AppWave finishes broadcasting the app to your system, it launches automatically and the **+Add** button for the app changes to **Run**. Apps that you have **Run** appear in the Application Window when you click **Managed Apps**.

NOTE: When you choose to add an app that is a member of a suite, all the apps in that suite start downloading.

REQUEST Indicates that the trial license for the app has expired. Click to request a license from the private AppWave server. If a license is not available, you are prompted to **Retrieve/Import License(s)** from the Embarcadero license center or to **introduce a serial number**.

FREE Launches a free app. After you sign in to the AppWave Store, the app launches. Free apps may be trial apps that require a license to use beyond the trial period, or may be apps that have a subset of the features of the licensed versions. Apps that you have **Run** appear in the Application Window when you click **Managed Apps**.

MASTER Downloads the template to master a third party, Embarcadero-supported app and starts the Studio mastering process. Templates do not appear if you do not have mastering (authoring) privileges.

INSTALL Launches the app installer. Installed apps run faster on your system and can be run when not connected to the AppWave Store when offline license usage privileges have to been granted to the user.

View Channel

Click an app to view application details and versions, and read and write application reviews.

Search Filter

Click to choose an application attribute by which to limit the search. The search looks for matches for the specified search string only in the text of that application attribute.

Search/Address Bar

Enter the first few letters to limit the applications shown in the Application Window to only those matching those letters. Enter the full name of the application to display that application directly. You can also enter a search word, such as productivity to find all the applications whose titles or details contain that word. Reviews are not searched. Click a product or folder and the address of that item appears. When you've found the application you're looking for, you can copy the address and share it with a colleague who, if connected to the same AppWave, can use the address to directly display the search matches in the application window. In the search/address bar you can also enter the URI of an AppWave you want to connect to.

The following are supported in the search bar:

- Search for one or more words (string).
- Use double quotes (" ") around strings to find only matches containing the strings in the given order.
- Use the asterisk symbol (*) to fill in the blanks. For example, "database * tool" returns "database management tool" and "database optimization tool".
- Use the OR operator to find matches containing any string specified in the query. For example, database OR tools returns all matches with either "database" or "tools".
- Use the & operator to find matches containing more than one string. For example, database & tools returns only matches containing both "database" and "tools".

You can further limit the matches found by your search criteria by being more specific and manually entering the search URL parameters in the address bar. The general format of the Search URL is:

```
app:// [location] / [URI] / [command [?params] ]
```

where

location is a required parameter and has the format of

```
appwave_address [/folder_like_structure]
```

Location can also be specified so all available locations are searched, such as

```
app://search?all=database and management
```

where all locations are searched for the keywords database and management

Location URL examples:

- `app://10.40.125:80/All-Access`, the search is performed on AppWave at the specified address in the All-Access folder.

URI is a list of application attributes in a path-like structure in the following order:

```
<application name>/ [<language>/<version>/>/<edition>/<launch type>
<license>/<license type>]]]]]
```

The order of the URI attributes is very strict and a space must be specified if you want to omit an attribute.

command allows you to perform an action on the application matches, such as search, details, launch, and import. When **command** is not present, AppWave Browser tries to navigate to the URL and display the contents of the item designated by the URL or all the matching applications if the search string contains application attributes (URI).

- **search** finds an application and displays it in the application window.

Examples:

```
app://search?all="database management", searches and displays all applications whose description contains "database management".
```

```
app://localhost:80/All-Access/search?language=english&version=2.0&all=App&license=platinum, the search is performed on the local AppWave in the All-Access folder, for any applications matching English language, version 2.0, broadcasted Launch Type, All-Access Platinum License.
```

- **details** displays the application details page.

Examples:

```
app://localhost:80/3rdRail/details?page=Home
```

```
app://localhost:80/Notepad++/details?page=Reviews
```

The `details` command has one parameter that indicates the page to display when looking at details and can have following values: `Home` and `Reviews`

- **launch** starts an application.

Example:

```
app://localhost:80/Embarcadero DB Optimizer/ENGLISH/2.5.1/XE Pro/App//Concurrent/launch
```

To pass command-line arguments when launching an application, this URL must contain the parameters as follows:

```
app://localhost:80/Embarcadero DB Optimizer/ENGLISH/2.5.1/XE Pro/App//Concurrent/launch?%1=arg1&arg2=value
```

UNDERSTANDING APPWAVE APPS

In addition to the standard installation executables for AppWave applications, Embarcadero provides AppWave Apps versions of each product. Through the Embarcadero AppWave Store you also have access to many free apps from other parties. Apps simplify deployment and enable side-by-side versioning. When AppWave Browser is not running in Turbo mode, such as in a locked-down desktop environment, Apps are ideal because they do not affect system files or system registry settings.

AppWave Apps run within their own space without sharing DLLs or system-wide settings that could conflict with other applications. Application data, including configuration and license information, is stored locally on the hard disk, separate from the executable itself. AppWave Apps run on the local machine and are launched from the network using AppWave Browser.

AppWave Apps are provisioned and licensed by AppWave (leveraging the integrated Embarcadero License Center) and then accessed using AppWave Browser. AppWave obtains software updates from the AppWave Store and makes them available to the AppWave Browser user.

Using Apps on a shared AppWave avoids the need to keep multiple machines updated with new versions. By keeping the AppWave versions up-to-date, you automatically gain access to the latest versions of the products.

Apps launched from AppWave Browser benefit from application streaming because the application begins to open before the product has been fully downloaded. However, if you need frequent access to an application, you should download and run the file locally, which is typically faster than running it from AppWave.

LIMITATIONS OF APPLICATION VIRTUALIZATION

Some apps in AppWave perform automatic updates from vendor websites. Such in-app auto updates generally will not work in a virtualized app. If an auto-update happens when running an app from AppWave, AppWave Browser users should cancel the update operation as it is likely to fail. Similarly, users should not select menu items within an app that update from vendor website.

To avoid this issue apply updates for existing apps once for all users via the mastering process using AppWave Studio. The most recent versions of Embarcadero XE apps are always available on the AppWave Store and are made available to Embarcadero users with maintenance contracts. Embarcadero also updates third-party apps on the AppWave Store regularly.

LAUNCHING APPS

AppWave Apps may be applications that are mastered into a single file that runs without installation or they may be installers. The application runs on the desktop, locally and under 'full power' but does not change system areas of the OS or registry. Apps run within their own space, with no shared DLLs or other system-wide settings that could conflict with other applications. Application data, including settings and licenses are stored locally on the hard drive separate from the executable.

The size of the application cache, set in the AppWave Browser options, can affect how efficiently the Apps run. If the entire App fits into the cache, it will run faster. If you are running multiple apps simultaneously, a large cache can also be beneficial.

NOTE: For information on setting the cache, see [Configuring AppWave Browser Options](#).

- 1 Select **Managed Apps, AppWave,** or **AppWave Store**.

- In the application window, locate the app you want to run by scrolling through the list, or by using the Search Bar. For more information, see the "Search" section of [The AppWave Browser Interface](#).

Notice the Readiness status. This icon shows the status of the app.

RUN Launches an app that has been cached on your private AppWave. Apps that you have **Run** appear in the Application Window when you click **Managed Apps**.

+ ADD Add an app that is not currently available on your AppWave Store but can be downloaded from the Embarcadero-hosted AppWave Public Store to your AppWave Store. Once available on your AppWave, any user can then run or install the added app. Added apps appear in **Managed Apps**. Once AppWave finishes broadcasting the app to your system, it will launch automatically and the **+Add** button for the app changes to **Run**.

NOTE: When you choose to add an app that is a member of a suite, such as Microsoft Office, all the apps in that suite start downloading.

REQUEST Indicates that the trial license for the app has expired. Click to **Retrieve/Import License(s)** from the Embarcadero license center or to **Introduce a serial number**.

FREE Launches a Free app. To run Free Apps on the AppWave Store or on the AppWave Public Store, you need an AppWave ID or an Embarcadero Developer Network ID. After you sign in to the AppWave Store, the app launches. Free apps may be trial apps that require a license to use beyond the trial period, or may be apps that have a subset of the features of the licensed versions. Apps that you have **Run** appear in the Application Window when you click **Managed Apps**.

MASTER Downloads the template to master a third party, Embarcadero-supported app and starts the Studio mastering process. Templates do not appear if you do not have mastering (authoring) privileges.

INSTALL Launches the app installer. Installed apps run faster on your system and can be run when not connected to the AppWave Store when offline license usage privileges have to been granted to the user.

- Double-click the app and it launches.
- Accept the end user license agreement.

NOTE: For free apps, you will be asked for your Embarcadero Developer Network (EDN) credentials. You can create an EDN account at edn.embarcadero.com.

See Also

[Understanding AppWave Apps](#)

EXPLORING APPWAVE STORE

If you have an internet connection, AppWave Browser can connect to the AppWave Public Store where you can find many free and trial versions of apps that may be useful to you in your work or just plain fun to play with.

On the left side of AppWave Browser, click **AppWave Store**.



- Click the scroll bar to scroll through the products.
- To run the app, click its icon. After you sign in to the AppWave Store, the app launches.

- For a detailed description of the app, click the app icon.

C++Builder®
Version: XE3 (Update 1) Professional | License: (not available)
★★★★★ | Application Development | Visit Website | Embarcadero
+ ADD

Details | Reviews | Versions

C++Builder®, now with FireMonkey™, is the only true visual C++ development environment - designed for ultra-fast, component-based creation of highly-maintainable, visually stunning GUI applications for Windows and Mac OS X.

Application Description
C++Builder's fully visual two-way RAD IDE and thousands of available components speed and simplify building visually-rich and data-intensive end-user applications. C++Builder combines a powerful ANSI C++ tool chain with a rich and extensible visual framework for building lightning-fast native workstation, touch-screen, kiosk, multi-tier, Web and cloud applications. Use C++Builder with the FireMonkey platform to build 100% CPU and GPU native, visually engaging, cross-platform applications with 2D and 3D interfaces, effects, and animation.

Application Details
Application Name: C++Builder®
Updated: 4/17/2013
Current Version: XE3 (Update 1) Professional
App Size: 2367.57Mb
Categories: Application Development
Languages: ENGLISH
Developer: Embarcadero
Requirements:

From the App page of AppWave Store you can run apps and read and write reviews about them, click a link to the app producer's Web site, and share app information on your Facebook or other social media sites.

To use the AppWave Store or free apps on the AppWave Store, you need to create an AppWave ID or use your Embarcadero Developer Network ID.

For more information on the AppWave Enterprise Store or the AppWave Public Store, see the *quick start guides for each*.

CREATING APPS FOR CUSTOM APPLICATIONS

For information about using the **New AppWave Custom App** command, the Studio tab, or launching a mastering session using a template, see the *AppWave Studio User Guide*.

USING APPS OFFLINE

You can use your Embarcadero, free apps, and third party apps (such as Adobe Photoshop) offline, when not connected to AppWave if the following criteria have been met:

- Your AppWave administrator has assigned a license for the app to you or to your group.
- You have run the application at least once, so that the license file is downloaded to your system and the app appears in the **Managed Apps** section of the Browser.
- You have one of the following license types:
 - **Concurrent Licenses:** If you have a concurrent license for an Embarcadero XE app or third-party app, you can check out the license for offline use. For Embarcadero products, you check out the offline license within the application. You can use the app in offline mode for the maximum number of days specified by the AppWave administrator.
 - **Network Named User License:** If you have a named network license for an Embarcadero XE app, you do not need to check out the license for offline use. The license is checked out automatically when you launch the app. You can use the app in offline mode for the maximum number of days specified by the AppWave administrator.
 - **Workstation License:** Free apps use a workstation license that enables you to perpetually run the app in either online or offline mode after you run it once. You must provide Embarcadero Developer Network credentials in order to run free apps. Workstation licenses can also be assigned to you for third-party apps in order to assign the license for your use on a specific machine only.

INSTALLING PRODUCTS

In the Application Window, find and then double-click the application installer. The app installer downloads and runs.

NOTE: For installers, the application installation program launches. Follow the prompts of the installer. For installation assistance, see the installation or quick start guide of the relevant product documentation at docs.embarcadero.com or the installation information for the third-party application installer you are running.

USING LICENSES

Free Apps

When you run an app, a license is requested from AppWave. If it is a free app, you must sign in to the Embarcadero Appwave Public Store with your AppWave User ID (EDN ID) and agree to the license terms before you can use the free app. Some free apps have a limited time period during which they can be used. After this time expires you need to purchase a license in order to continue using the app.

Trial Licenses

Trial licenses are available for all Embarcadero products for a 30 day period from the time the license was issued. If you want to try an Embarcadero product, launch it from the AppWave Browser. Starting a trial for one Embarcadero product enables you to try out any of the products in the All-Access suite for 30 days. Once the trial period has expired you must purchase the app to continue using it. One trial license is available for each AppWave user.

When you click an app to start an Embarcadero app trial, you must log in to the AppWave Public Store with your AppWave Store ID (EDN account). If you do not have a user ID, you can create one.

When the trial license has expired, the app status showing in the AppWave Browser changes to **REQUEST**. Click **Request to Retrieve/Import License(s)** from the Embarcadero license center or to **Introduce a serial number**. You can also add a license certificate from the Tools and Options (Gear) menu, by selecting **Licensing** and then **Add license certificate**.

The trial license owner can be specified on the **Tools and Options** menu by selecting **Licensing > Change Trial Owner**.

Network Named User License

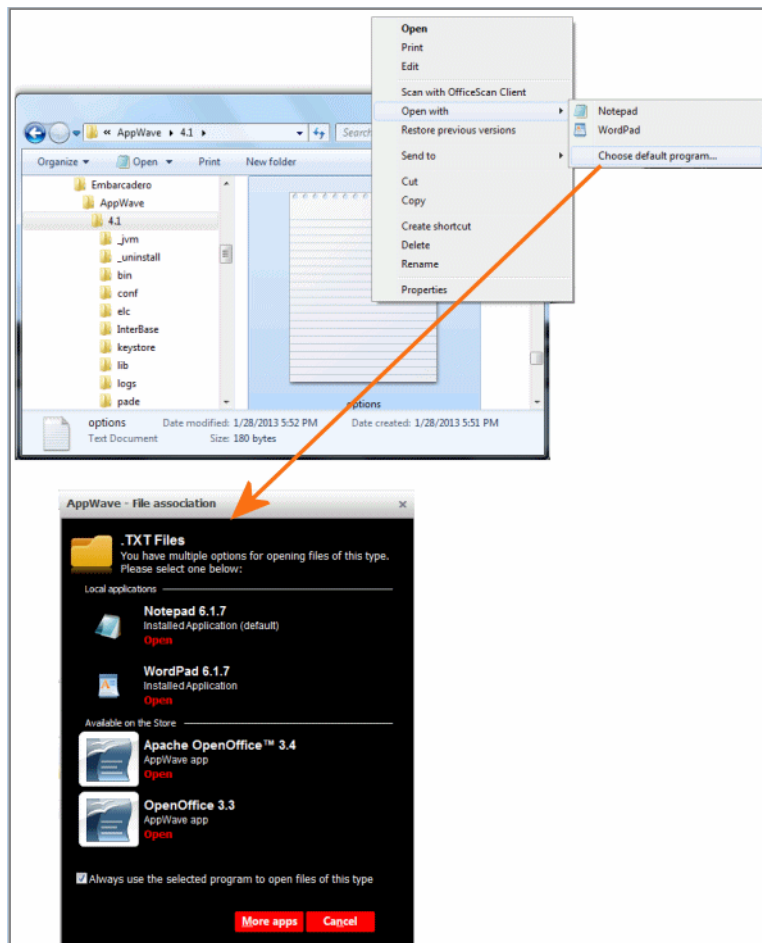
This Embarcadero license is assigned to a named user. It can be used on any machine on the network by the named user. The administrator can allow this license to be used offline, when not connected to the private AppWave Store. To use an Embarcadero product license offline, you must also check out the license from within the app, usually from the Help menu. Check with the publisher of third-party apps to find out how to use their named user app licenses offline.

Concurrent License

This type of shared license can float to any authorized user on the network. This license type provides for a certain number of seats. AppWave provides users with a license on a first-come, first-served basis. The administrator can reserve a number of licenses for a group of users. This license can also be restricted to specific valid IPs. In addition, the administrator can assign concurrent licenses for Embarcadero and third-party products to enable you to use this license while offline, when not connected to the private AppWave Store. To use an Embarcadero product license offline, you must also check out the license from within the app, usually from the Help menu.

RUNNING APPS FROM THE WINDOWS DESKTOP

With Smart App Links you can right-click a document and open the app associated with that document type. It also lets you, for example, from a Microsoft Outlook app email, double-click the Microsoft Word file attached and open the document in the Microsoft Word app. When you try to open a file, AppWave cross references the file type with a database of apps on the private AppWave and the AppWave Store, retrieves a list of appropriate apps that can open the file, retrieves a list of already installed apps that can open the file, and presents a list of appropriate apps to you. This gives you the ability to immediately open the file and set a default within the same workflow if the application is already installed or not.



NOTE: In some cases, the Smart App link is not immediately available from the desktop. For example, you might not see the link to an installed app the first time you right-click the desktop, but the second time you right-click, the app is listed.

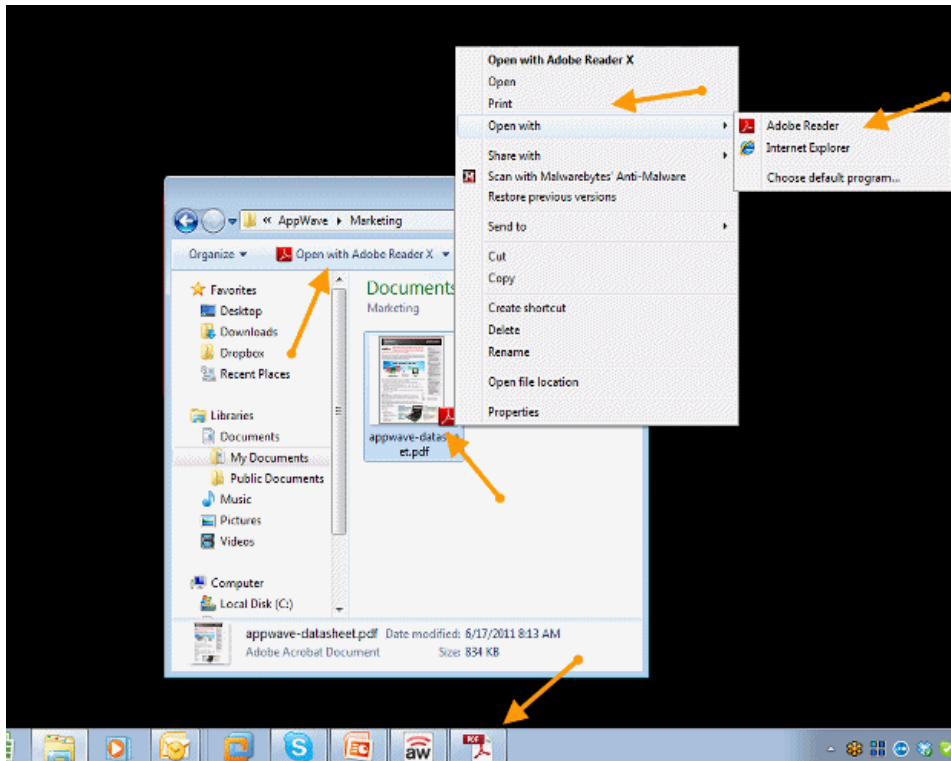
In AppWave Browser, you can create Windows Desktop icons for apps in your private AppWave Store, allowing you to launch apps directly from your desktop. AppWave Browser automatically launches if not already running and runs in the background in offline mode, not connected to the AppWave Store.

The first time an app is launched, it inserts a shortcut in the Windows Start menu and integrates actions into the right-click menu for files associated with the app. The Start menu short-cut and right-click menu options are app dependent and can also be modified during the mastering process.

In Windows 7 you can pin the app to the Windows Taskbar in the same manner as you would any other Windows application. Also, in Windows 7 Explorer, when you click a document created with an app you have run, a shortcut appears in the window.

Shortcuts are no longer available after you remove the app.

The following shows some of the places an app shortcut or Smart App link appears.

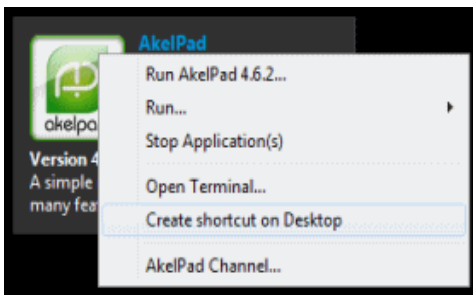


Creating a Desktop Shortcut

- 1 In AppWave Browser, locate the application in your private AppWave Store that you want to launch from the Windows desktop.

NOTE: You cannot create a desktop in the Search Results window. Find the app by clicking the folder that contains it and scrolling to locate the app.

- 2 Right-click the application and the following menu appears.



NOTE: In the Search Results window, this right-click menu does not appear. Click the app to go to the App Channel and then right-click the app icon to access the right-click menu.

- 3 Choose **Create shortcut on Desktop**. A Windows shortcut is created on the desktop. You can now use the shortcut to launch the app. If AppWave Browser is not already running, it will be launched before running the app. In this case, AppWave Browser runs in the background in offline mode, not connected to the AppWave Store or the AppWave Public Store.

KEEPING YOUR APPS CURRENT


By default, when there are multiple versions of an App available, only the latest version appears in the App Window. But, when you right-click the app, if there are multiple versions you can choose the version to run.

When you go to the App Channel, you can click **Versions** to see all the available versions. You can then run any available version of the App.

AppWave always runs the latest version of an app unless you set the default version on the **Versions** page of the App Channel.

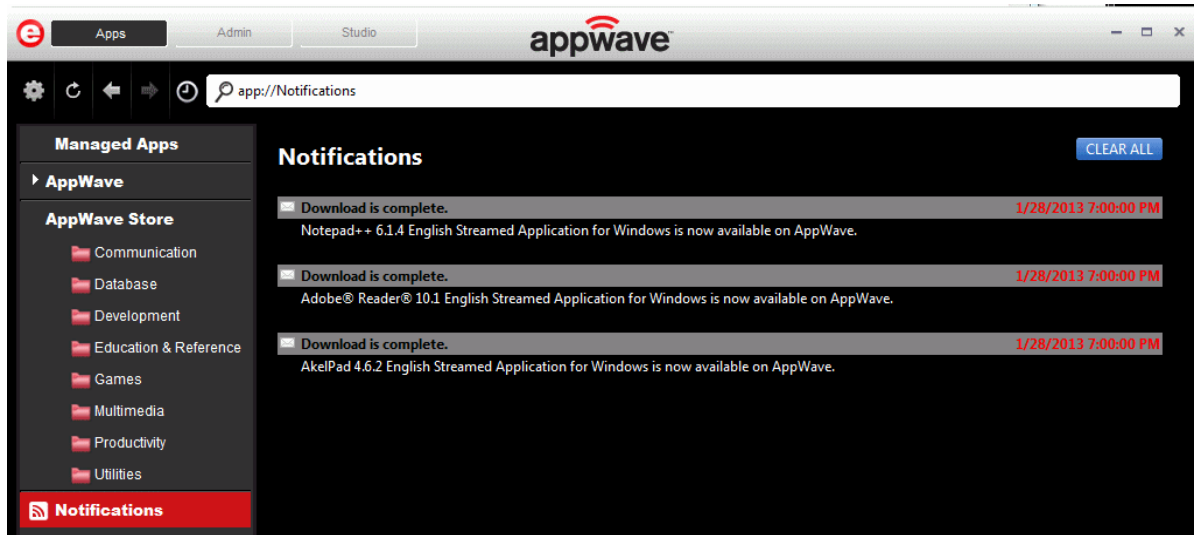
You can also ensure you always have the latest version of your applications by subscribing to AppWave notifications or by checking Notifications in AppWave Browser.

Subscribing to AppWave Notifications in your Internet browser

- 1 From the AppWave Home page, click the subscribe icon [] next to **AppWave notifications** at the bottom of the page.
- 2 *For Internet Explorer*, on the RSS feed page that appears, you can see the latest notifications. Click **Subscribe to this feed**

Checking Notifications

From the AppWave Browser, click **Notifications**. The Notifications appear. Once you have seen the notifications, click **CLEAR ALL** to remove all Notifications displayed.



READING AND WRITING APP REVIEWS

Within AppWave Browser you can rate the available applications and share your experiences using these applications with other users of the AppWave hosting the application. Ratings displayed for both products and their star ratings are weighted averages, so that a product with three ratings of five stars, one rating of four stars and one rating of one star would receive an overall rating of four stars, $((5+5+5+4+1)/5=4)$.

Once submitted, product and review ratings and comments may be moderated by the AppWave administrator who may determine whether or not to post the review comments for viewing by other AppWave users. Each review is also screened for questionable or vulgar words that if present, prevents the review from being accepted by AppWave.

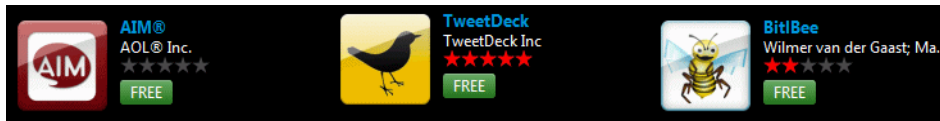
In the AppWave Store, you can also read and write reviews of apps. From the AppWave Store application window, click the name of the app to view the application details and also read and write reviews. For your convenience you can also share app review pages on AppWave Store with your friends via Email, Linked In, Facebook, Twitter, Yammer, and many other social venues. Just click one of the icons on the top right page of the app channel.

Read a review

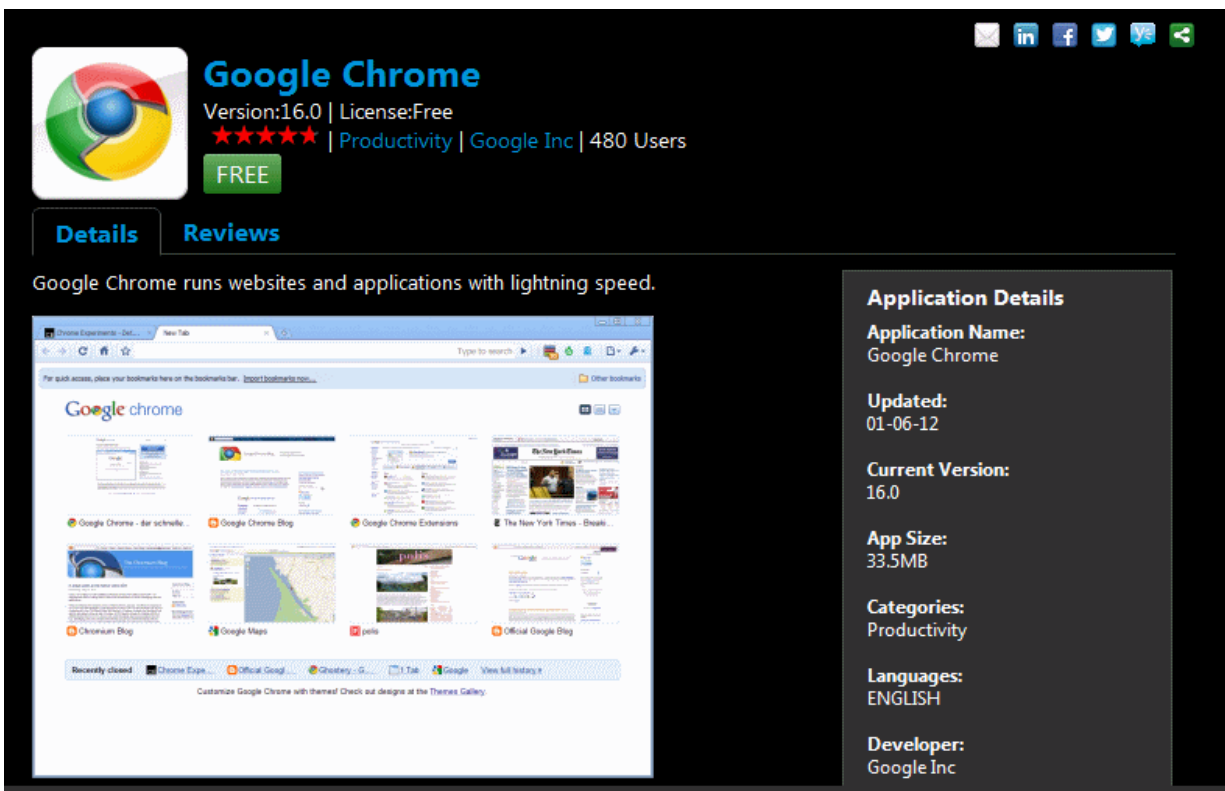
- 1 In the **Application Window**, locate the product you want to review or read reviews about.

TIP: Applications with reviews have a number of colored stars, which represent the average rating for that product.

NOTE: To read/write a review of an app launched from the AppWave Store, you must have the AppWave Store selected in the tree. You cannot read/write reviews of apps launched from the Store if you have Managed Apps selected.

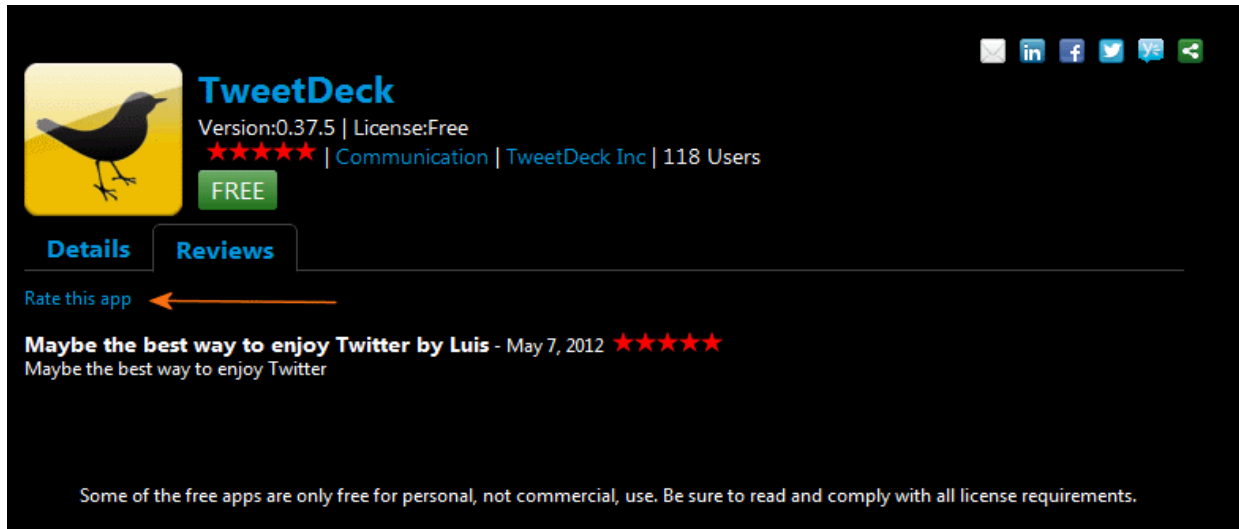


- 2 Click the app. On the application channel, you can read a detailed description of the application, and read, write, and rate application reviews.



3 Click the **Reviews** tab. The reviews pane appears.

NOTE: To write a review of an AppWave Store app, you must sign in to the AppWave Store if you haven't already.



On this pane you can see the reviews and the star ratings other users have submitted for this app.

Write a review

4 Click **Rate this app** and the **Write a Review** pane appears.

Write a Review

App Rating * ★★★★★

Review Title *

Description *

* Required Fields

OK Cancel

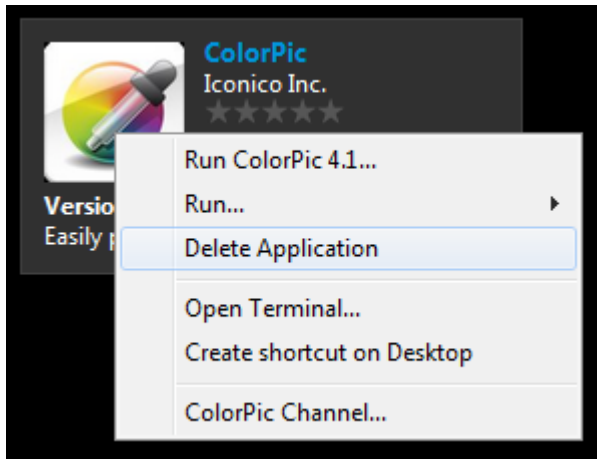
- 5 Complete the review page and then click **OK**. The Average Rating for the product is adjusted if necessary and the review is available for other users to read. You may have to wait until the Administrator authorizes the review before it is posted.

REMOVING APPS

You can remove apps that were downloaded or cached on your system in the local repository. However, you cannot remove an app that is currently running. When you remove an app, any file associations for that app are also removed.

TIP: You can clear your cache totally and remove all apps from your local repository by clicking **Clear** on the **Options** dialog.

- 1 In the Application Window, locate the app you want to remove.
- 2 Right-click the app and select **Delete Application**.



- 3 Confirm that you want to completely remove the local files of the app.

This removes the contents of the following directories:

Windows XP: C:\Documents and Settings\[username]\Local Settings\Application Data\Embarcadero\Product Repository\[AppName]

Windows 7 and Vista: C:\Users\[username]\AppData\Local\Embarcadero\Product Repository\StreamingCore\[AppName]

NOTE: Your local product repository may be in a different location depending on whether you chose the default location as above or have configured AppWave to use a different directory on a local or shared network drive. For more information, see [Cache Folder](#) in "Configuring AppWave Browser Options".

UNINSTALLING APPWAVE BROWSER

You should uninstall AppWave Browser before installing a new version. You can uninstall AppWave Browser using your standard operating system application removal utility.

Windows XP: **Control Panel > Add or Remove Programs**

Windows 7 and Windows 8: **Control Panel > Programs.**

NOTE: A reboot of my system may be required.

Index

A

- Additional resources 6
- All-Access
 - Folder 22
 - Licensed products 22
- App cache size 12
- Application channel
 - Details 38
 - Read reviews 39
- Application streaming 27
- Apps
 - Keeping current 36
 - Removing 40
 - Reviewing 37
- AppWave
 - Available applications 22
 - Connecting to 9, 13
 - Description 22
 - Folders 22
 - Logging in to 17
 - New applications 22
 - Notifications folder 36
- AppWave Browser
 - Apps tab 17
 - Configuring options 11
 - Hiding 11
 - Launching 10
 - Repository 13
 - Studio tab 17
 - Switching views 23
 - Tabs 17

- AppWave Store 22
- Average rating 40

B

- Browser launching 11

C

- Cache folder 12
- Channels
 - Read reviews 39

D

- Discussion Groups 6
- Do not check for Browser updates 12
- Documentation 6

F

- FAQs 6
- Folders 22
 - Administrator created 22

- Forums 6

H

- Hide when minimized 11

I

- Internet readiness 28

K

- Knowledge Base 6

L

- Latest version 36
- License 22
- Logging in 13

N

- Notifications
 - Description 22
 - Folder 36
 - RSS News Feed 22
 - Subscribe to RSS feed 36
 - Subscribing to 36
 - Viewing 37

O

- Options 11

P

- Product ratings 37
- Proxy Settings 13

R

- Readiness 28
- Repository 13
- Reviews 37
 - Censoring 37
 - Moderating 37
 - Rating 38
 - Writing 39

- RSS feed 36

S

- Search filter 24
- Search/address bar
 - Filtering 24
 - Syntax supported 25

T

- Tools and options 11
- Turbo mode 12

U

- URI 25

