



Product Documentation

AppWave™ Browser

Apps Quick Start Guide

Version 4.2

Published August, 2013

© 2013 Embarcadero Technologies, Inc. Embarcadero, the Embarcadero Technologies logos, and all other Embarcadero Technologies product or service names are trademarks or registered trademarks of Embarcadero Technologies, Inc. All other trademarks are property of their respective owners.

Embarcadero Technologies, Inc. is a leading provider of award-winning tools for application developers and database professionals so they can design systems right, build them faster and run them better, regardless of their platform or programming language. Ninety of the Fortune 100 and an active community of more than three million users worldwide rely on Embarcadero products to increase productivity, reduce costs, simplify change management and compliance and accelerate innovation. The company's flagship tools include: Embarcadero® Change Manager™, CodeGear™ RAD Studio, DBArtisan®, Delphi®, ER/Studio®, JBuilder® and Rapid SQL®. Founded in 1993, Embarcadero is headquartered in San Francisco, with offices located around the world. Embarcadero is online at www.embarcadero.com.

Contents

- Welcome 5
- Download AppWave Browser from Private AppWave 5
- Start AppWave Browser 6
- Search for an Application. 7
- Read/write an Application Review 9
- Launch an App 10
- Nice to Know. 10
- Access Online Help 12

CONTENTS

WELCOME

This AppWave Browser Quick Start Guide will help you install AppWave Browser, run apps, and introduce you to the AppWave Browser environment. For more details, please see the AppWave Browser User Guide available by pressing F1 from the Apps tab or on the Embarcadero documentation website, docs.embarcadero.com/products/appwave.

DOWNLOAD APPWAVE BROWSER FROM PRIVATE APPWAVE

Using the AppWave Browser you can access application information and run apps on your private AppWave and on the AppWave Store.

- 1 From an internet browser running on the machine where you installed AppWave, connect to AppWave at:

`http://localhost:port number/aaserver`

- 2 To install AppWave Browser, on the AppWave **HOME** page, click **Install**.

embarcadero WELCOME, admin NOTIFICATIONS (6 NEW) ADMIN Help

appwaveTM
Bring your desktop into the 21st century
With appwave, software moves as quickly as you do.

Get the AppWave Browser

Get the latest version of the AppWave Browser for Windows (English version)

Please note: To install the AppWave Browser, administrative privileges are required to the Windows operating system you are installing to. During startup you may be required to provide the following AppWave address:

app://ETT0TC20.embarcadero.com:80

Install **Browse Catalog**

AppWave@Browser-VQ_2-0-0-101-0212171319

AppWave Resources

Experience all the latest resources for AppWave:

- Marketing materials, video tutorials and developer resources:
www.embarcadero.com/products/appwave
- Documentation for End-users, Authors and Administrators:
docs.embarcadero.com/products/appwave

Embarcadero AppWave VQ_2-2-build.76 AppWave notifications © Copyright 2012 Embarcadero Technologies, Inc., All Rights Reserved

- 3 Save AppWave Browser to disk; the download location depends on your browser setting.

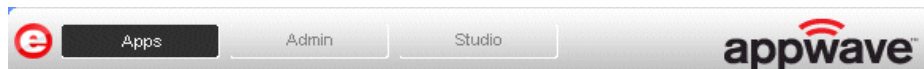
START APPWAVE BROWSER

To launch AppWave Browser, double-click the application executable downloaded in [Download AppWave Browser from Private AppWave](#). Accept the End User License Agreement and AppWave Browser Launches.

NOTE: You must have Administrator privileges to install AppWave Browser. If you do not have administrator privileges, ask your administrator to install AppWave Browser for you.

You are automatically connected to the AppWave from which the AppWave Browser application was downloaded, using your Windows login credentials. If you do not already have an AppWave user account, one may be created for you with default user credentials, depending on whether the Administrator has enabled this functionality. If you cannot log in automatically, ask your AppWave administrator for your user name and password.

Depending on your user privileges, AppWave Browser may have up to three tabs available, *Apps*, *Admin*, and *Studio*.



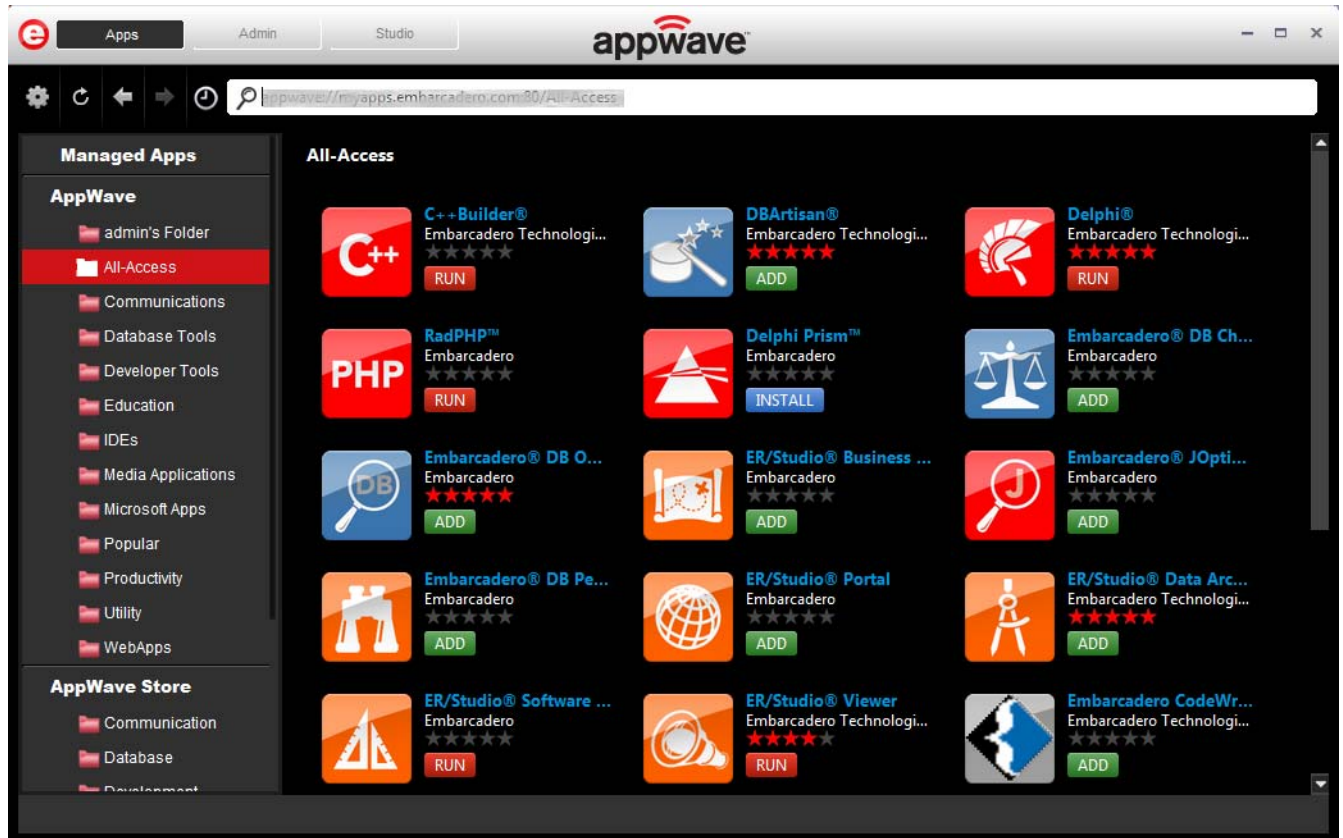
On the *Apps* tab you can view application details, search for and select the one you want to run. Applications are grouped into folders. Which folders of applications you see depends on permissions set for the folders in the *Manage Folders* section of the AppWave Console.

On the *Admin* tab you can manage users and groups, products, licenses and system properties. This is the same as the AppWave Console seen in your internet browser. This tab is only available to members of the *Administrators* group.

On the *Studio* tab you can master your own apps, web apps, or installers to deploy on AppWave. This tab is only available to members of the *Authors* group.

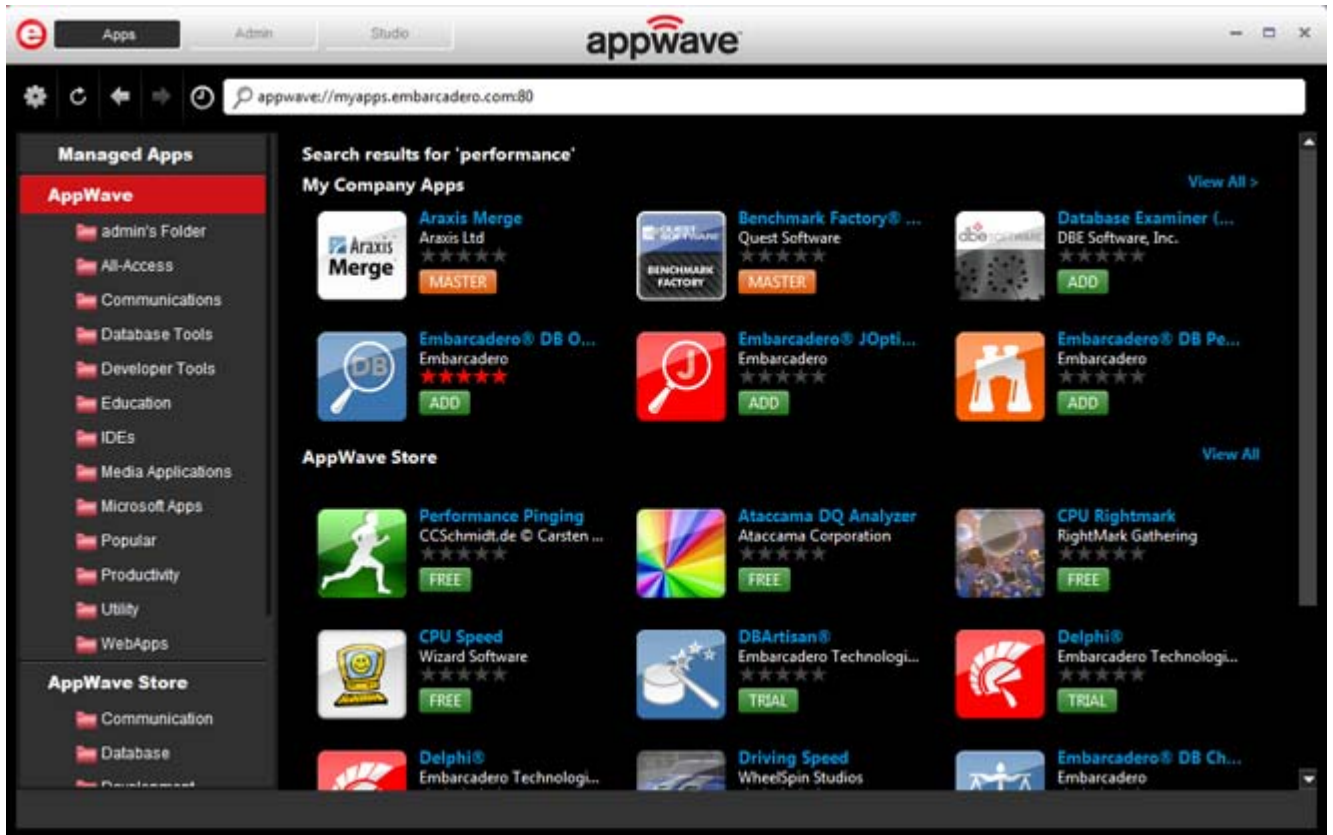
SEARCH FOR AN APPLICATION

- 1 On the **Apps** tab, click **AppWave** to see the list of applications available on AppWave or click any folder to see a subset of the apps available.



- In the search field next to the eyeglass [🔍], enter the first few letters of the application you want to learn more about or run or a keyword you expect to see in the application name or details and then press **Enter**.

The application list is filtered to show only the applications that meet your search criteria.



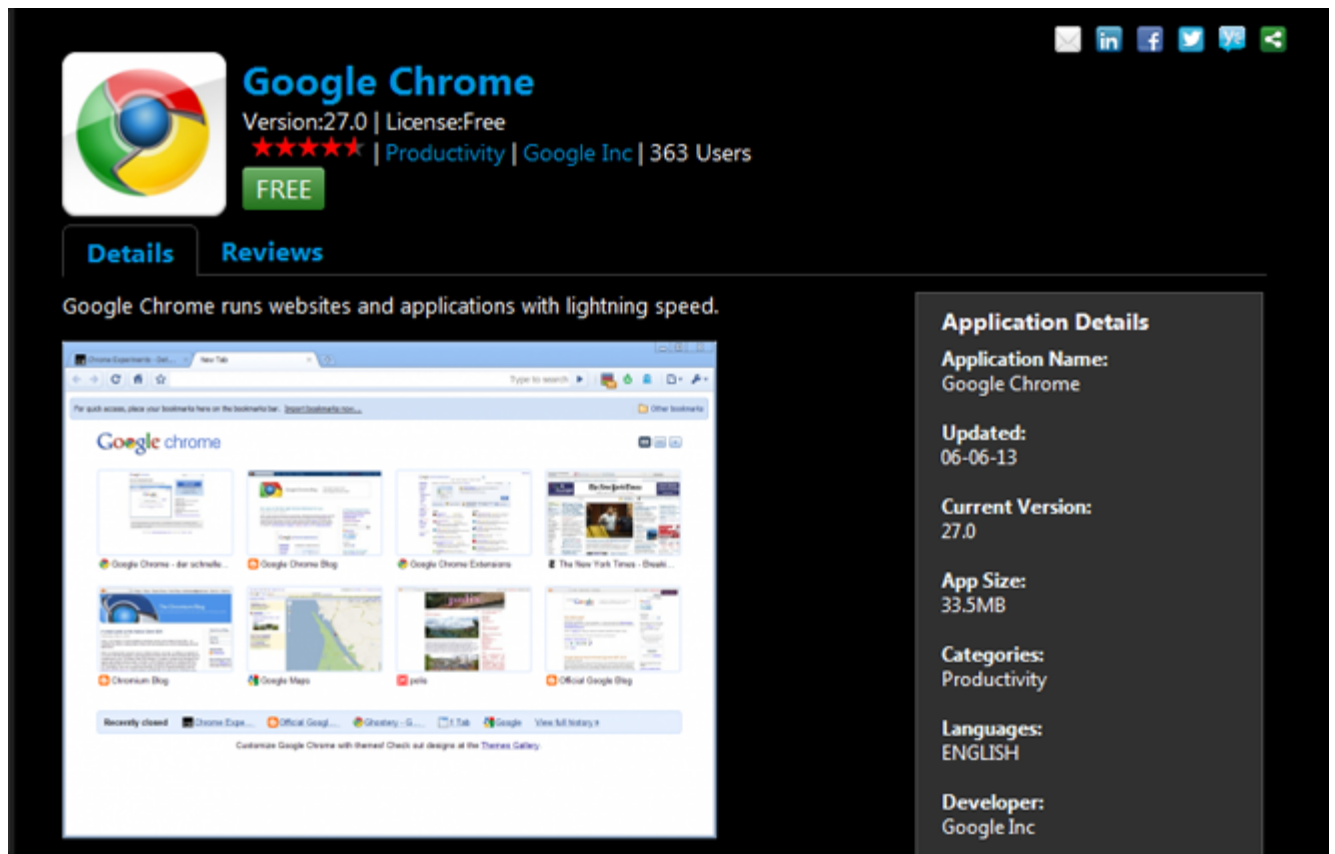
READ/WRITE AN APPLICATION REVIEW

- 1 Locate and then click the app to read the reviews available for it.

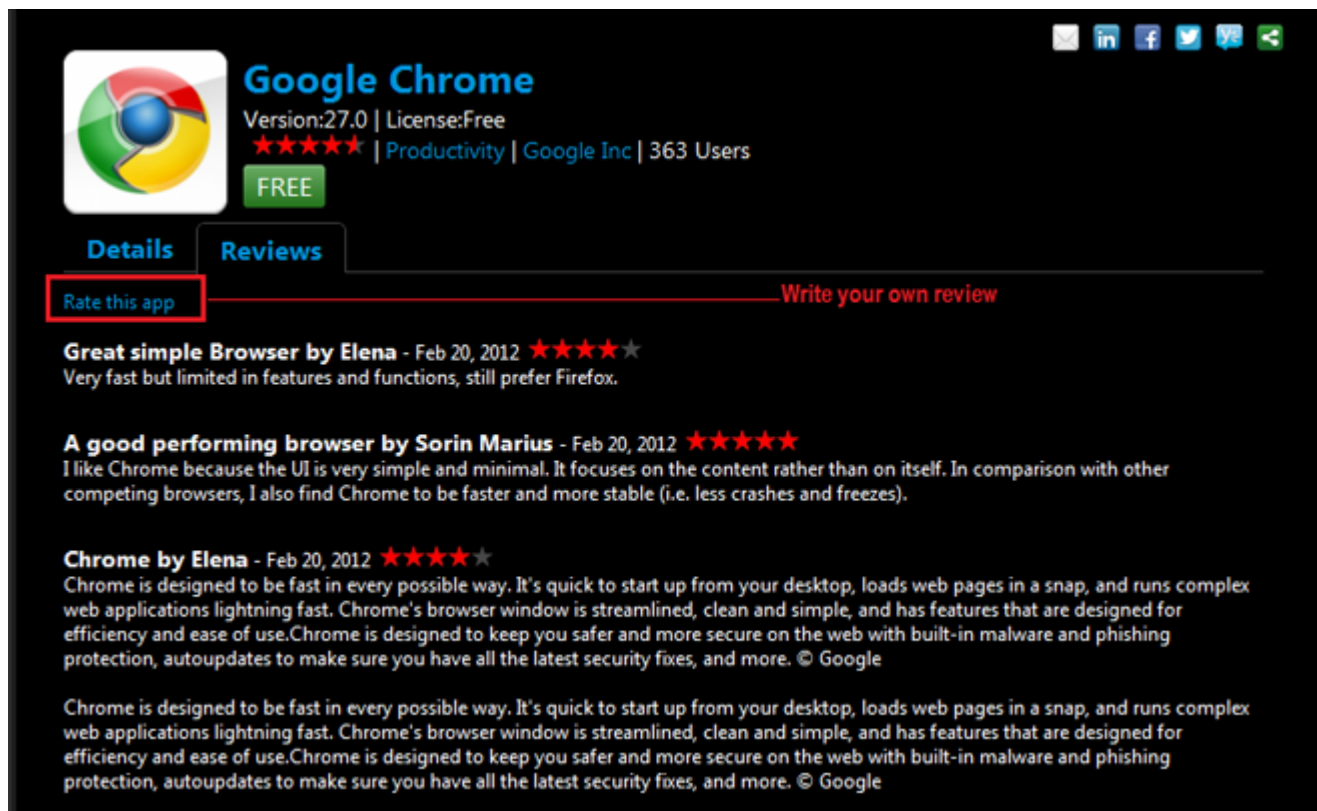
Applications for which there are reviews show the average rating of the app below the App name; some or all of the stars will be colored.



The application channel pane appears where you can read a detailed description of the application and read, write, and rate product reviews.



- 2 Click the **Reviews** tab and then scroll to view all the reviews.



In the application details above we see that the **Average Rating** for this product is five stars.

- 3 Click **Rate this app** to write and submit your own review.

LAUNCH AN APP

From the AppWave Browser you can launch any app on either your private AppWave or the AppWave Store.

- 1 In the application window, locate the app you want to run.
- 2 Click **RUN**, **ADD**, or **FREE** and the launch starts. Shortly afterwards, the app runs. It's as easy as that. The next section provides some useful information to help you understand and use AppWave Browser efficiently.

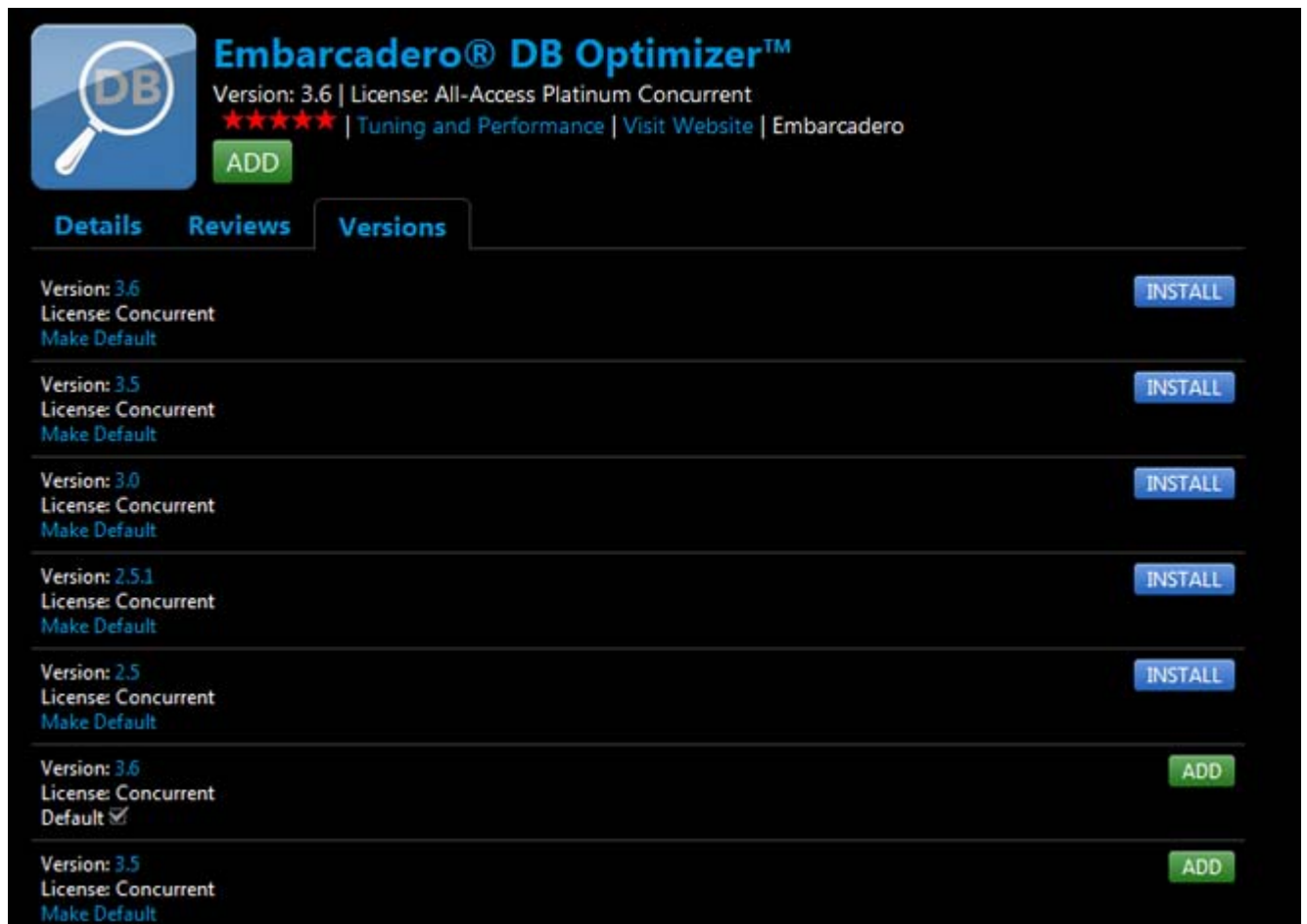
NICE TO KNOW

If the application has not already been downloaded from the Embarcadero public AppWave to your desktop, then the app starts downloading and when the download is finished it will start automatically.

Apps that you have added will appear in **Managed Apps**. You can rename **Managed Apps** in the AppWave Browser Options dialog accessible from the Tools and Options (⚙️) menu.

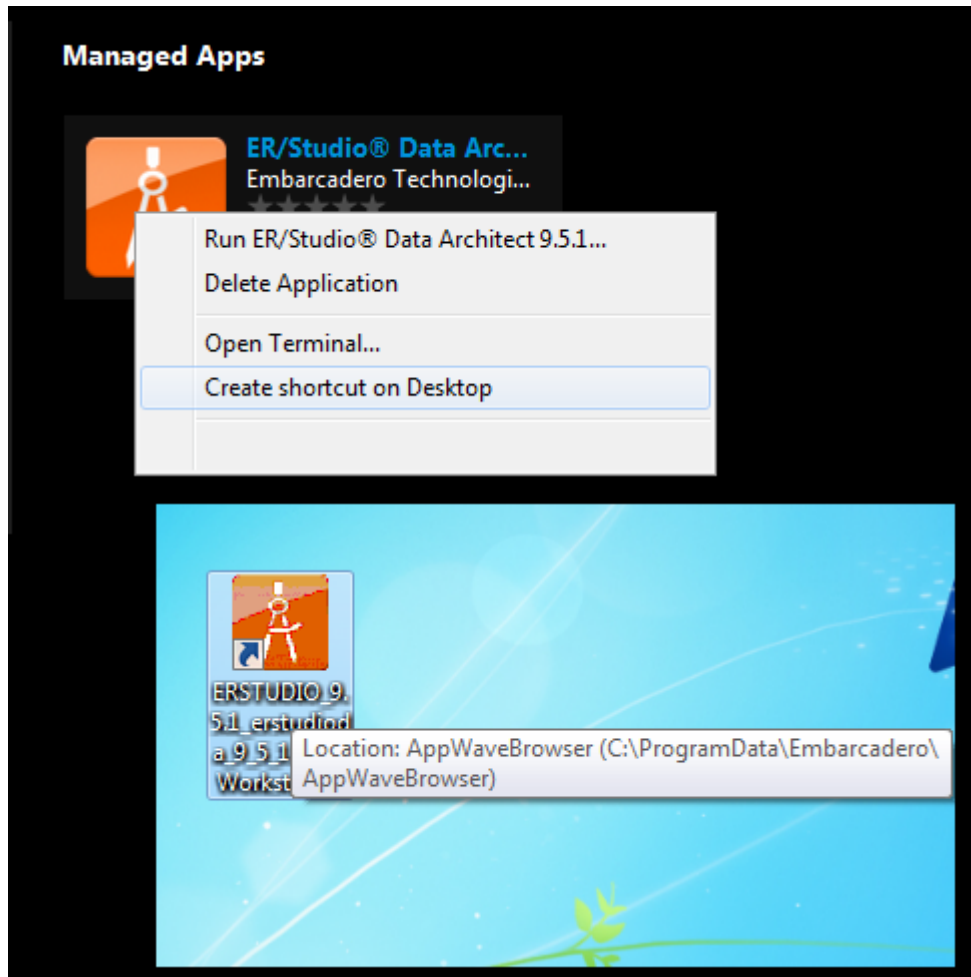
If there is more than one version of the application, click the app and then click **Versions** to view the details of the available versions and then click the **ADD** or **RUN** button for the version you want to run.

For example, in the following screen shot, there are multiple versions of Embarcadero DB Optimizer.



AppWave will always run the latest streamed version of the app, unless you click **Make Default** for another version. Then, it will run that version. As you can see in the previous screen shot, the **ADD** (streamed) version, not the **INSTALL** version, is the default.

If you select **Create shortcut on Desktop**, you can launch the app from the Windows desktop.



ACCESS ONLINE HELP

Online help is available for each tab of the Browser: Apps, Studio, and Admin. Online help is supported on Internet Explorer and Firefox.

Click the **Tools and Options** icon [] and choose **Help Content**.

or

Press **F1**.

Your internet browser will connect to **docs.embarcadero.com\products\appwave** and the help is displayed. Help is available for each of the tabs in AppWave Browser. The help that displays depends on which tab is active when you select **Help Content**.